

THE ULTIMATE IN  
**SHREDDER-GRINDERS**  
**W-W**

**FOR COMPOST, MULCH, SOIL & OTHER ORGANIC MATERIALS**



**W-W GRINDER CORP.**

2957 No. Market-Wichita, Kansas 67219  
316/838-4229



*The world's leading manufacturer of grinding and shredding equipment for Gardeners, Florists, Nurserymen, Parks, and Cemeteries.*

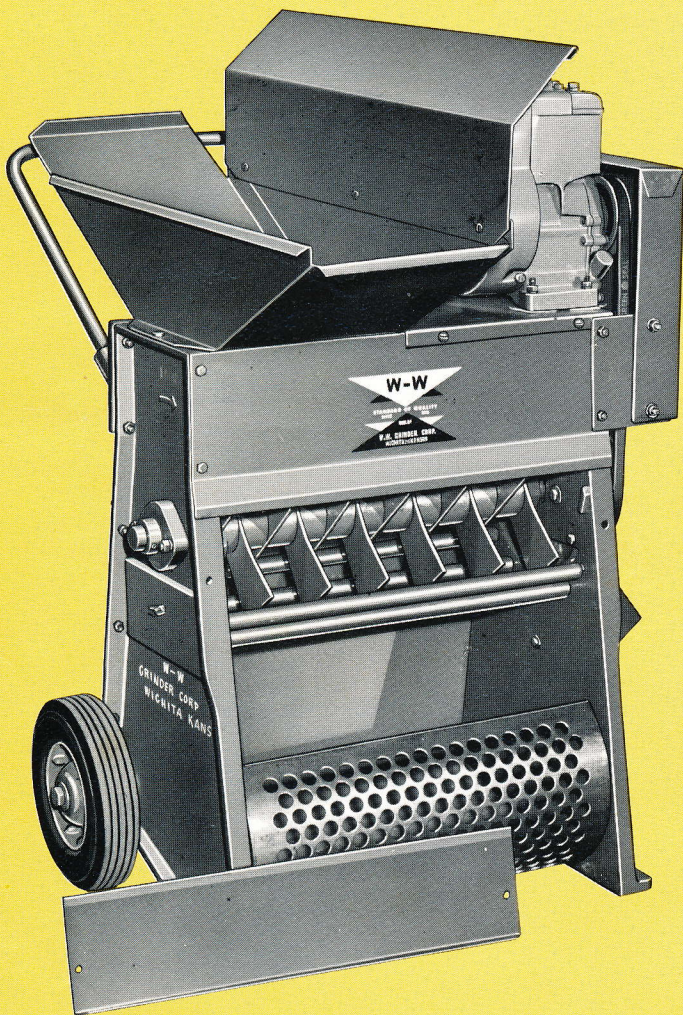


Put a W-W SHREDDER-GRINDER to work for you and see how easy it is to grow vegetables like these!



Enjoy the fruits of your toil the easy way... pride yourself in the things you raise. Return nature's own nutrition and humus to your soil in the form of fine compost—organic fertilizer—or in highly efficient mulch. Reap the reward and satisfaction of seeing your vegetables, fruits, flowers, shrubs, and lawn grow more healthfully. W-W is the shredder-grinder that will let you do it faster and better. A W-W will shred or grind any friable material for compost or mulch to speed up decomposition and to release valuable nutrients to the soil. Typical of the materials you can process through a W-W are leaves, straw, peat moss, osmunda, hard manure, grass clippings, cuttings of stalks, vines or vegetable stalks, residue from tree or hedge trimmings, weeds, table scraps, fruit and vegetable parings, coffee grounds, citrus skins, corn stalks, marine wastes, sewage sludge, dried blood, etc. Even small bones, aluminum cans, glass, bottles, newspapers and phosphate rocks can be reduced to bits with a W-W!

## Look at the BIG DIFFERENCES in a W-W SHREDDER-GRINDER!



### The World's Most Popular Shredder-Grinders... W-W's Model 2 & 62!

The Model 2-G is powered by a 3-hp Briggs & Stratton engine with "easy spin," recoil starting. Model 62-G uses same rope recoil starting with 5-hp engine. Model 2 has 9½" x 30" hopper... Model 62 hopper is 9½" x 36". Both have adjustable feed gates. High-carbon steel, hammermill-type hammers distribute material completely across 20" wide cutting cylinder. One-piece tubular handle for easy maneuverability. Belt guard standard.

Model 2-E, 1-hp electric motor; Model 62-E, 1½-hp electric motor. Models 2-N & 62-N, less power. Model 62-G available with optional 110V electrical start gasoline engine and heavy-duty cylinder with cutter bar and reversible quick-change hammer tips. Center shaft feed opening also optional.

When you invest in a Shredder-Grinder, you want one that will last a lifetime—not just a season or two. And, you'll want one that can handle a wide range of material... *not just blow dry leaves into a bag!* A W-W does it all. Through more than 50 years, users—from small organic gardeners to large commercial producers of organic fertilizer—have learned to rely on W-W for quality, dependability and versatility. The illustration at left, of the popular Model 2-G, shows typical quality that goes into all W-W machines. The features below are common to all W-W models.

**Main frames are guaranteed forever against corrosion!** The life and performance of your shredder-grinder depends upon the main frame. Moisture, soil and vegetation acids eat out machines made of sheet metal; bearings and shafts lose their alignment; they end up as junk. Even automobile manufacturers have been unsuccessful in developing a protective coating on sheet metal to withstand corrosion. That's why W-W's have a rust-resistant, grey cast iron main frame to last a lifetime.

**Interchangeable shredding roller bars and grinding screen are standard equipment.** A W-W comes equipped so you can shred or grind as desired or as material requires. You can change from screen to shredding bars in minutes to handle wet material. Screens are available with perforations ranging from ⅛" to 2"; ¾" perforated screens are standard.

**High-speed, sealed ball-bearings on the drive shaft.** Bearings have solid mountings and cast iron main frame assures perfect alignment. Compare this with bearing mountings on sheet metal constructed machines.

**High-quality, hammermill-type hammers...** have high carbon steel cutting edge for exceptional long life...are easily replaced.

**High-capacity on one-third less power.** W-W's operate at 2700 revolutions per minute and require only about ⅓ the horsepower of other machines. This is made possible by the perfectly aligned bearings and the scientifically balanced cylinder—only possible when mounted on rigid cast iron frames.

**No baffle plate required.** All material enters the grinding chamber and is thoroughly shred or ground—not merely stirred up. The speed of the cylinder spreads the material across the entire length of the rotor without slugging or waiting to clear as do machines equipped with baffle plates.

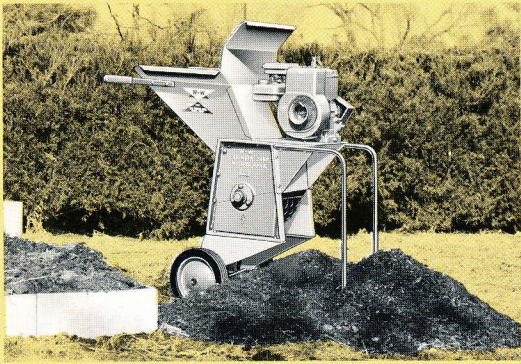
**Stone ejector openings.** W-W's Model 2, 62 and 66 Shredder-Grinders have stone ejector openings to remove stones and such objects so your finished pile of shredded or ground material is uncluttered by unwanted materials. All models grind small phosphate rocks or limestones which serve as a soil sweetener.

**Compact design.** All W-W's are designed for compactness and easy portability... require less storage space. Notice the engines mounted at the top—out of dust and dirt—and requiring about ½ the storage and space of other machines.

**Fully guaranteed.** W-W machines are constructed with such care, quality, and experience that they are fully guaranteed.

**Compare!** If you have any doubt of the superiority of a W-W, compare it with any other. Look at the weights, you can tell W-W puts more in their machine so it works better, lasts longer!



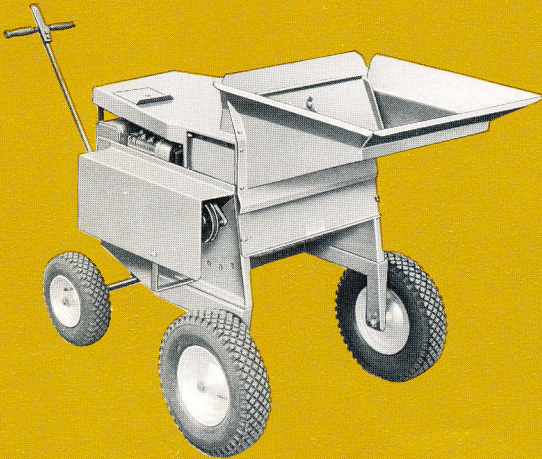


The economy Model A

## There are so many jobs a W-W will do!

A W-W knows no season nor any limit to its usefulness. It will handle all shredding and grinding jobs... from preparing organic materials for the compost pile and mulch... to turning and mixing the pile... and then grinding the finished compost to the desired texture for spreading. It is used for screening sod fine enough for potting soil or top dressing and for mixing soil with compost or other fertilizer. Making mulch is a specialty with a W-W. The secret of W-W's success is the interchangeable grinding screen and shredding roller bars furnished as standard equipment so you can shred as well as grind. To make compost, most organic usually has to be shredded, but dry leaves, phosphate rock, small bones, hard clods, and manure require grinding. The removable rollers let you coarse shred and aerate damp materials, then reshred or grind finer after they dry. Once you own a W-W, you'll find dozens of uses for it!

## THERE ARE SO MANY W-W'S FROM WHICH TO CHOOSE!

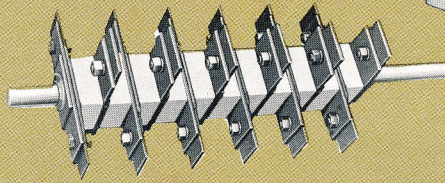
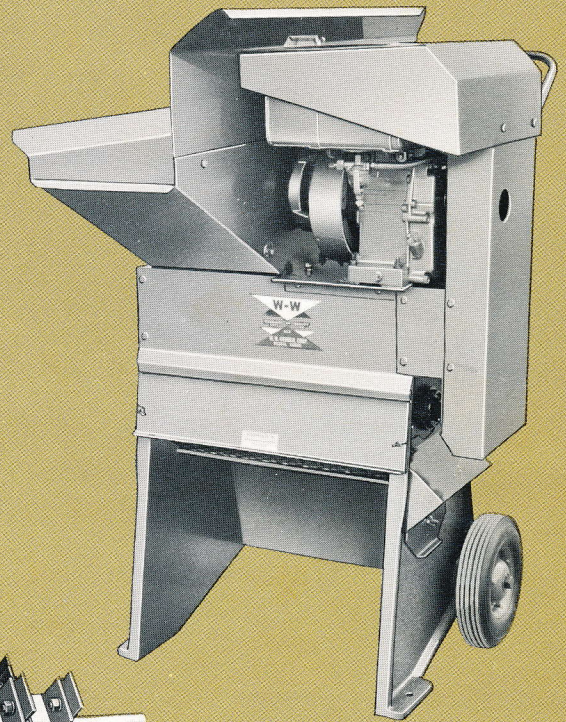


### NEW! Four Wheel Model 5-20-4

W-W's new Model 5-20-4 features a full width, easy-to-load hopper that feeds a wide, heavy-duty 20" cylinder with cutter bar, and reversible quick-change hammer tips. Tree trimmings, up to 3" in diameter and smaller green hedge cuttings are fed through a separate side-mounted hopper. This smaller hopper features a hinged gate for added safety. Large hopper feeds material directly across the full width of the cylinder, and has an adjustable feed gate. Large pneumatic tires give the Model 5-20-4 exceptional maneuverability. Available with either an 8-hp rope recoil or 12-volt electric start gas engine (12-volt battery and key operation included). Big 13 cubic yard per hour capacity. Center-shaft feed opening and heavy-duty cylinder are standard.

### MODEL 66-G... a rugged Shredder-Grinder for the gardener who wants to do more!

Designed after the popular Model 2 and 62, the Model 66-G incorporates the same fine workmanship and superior features standard in all W-W equipment, and more! It has a larger 11" x 36" hopper with heavy-duty construction and complete engine cover for added protection against dust and dirt. W-W's big 20" cylinder, with cutter bar and reversible, quick-change hammer tips is standard! The durable 66-G lets you grind the complete range of organic materials, including tree trimmings up to 3" with attachment of center shaft feed option! Power options include: 8-hp rope recoil or 12-volt electric start gasoline engine or 3-hp electric motor.



Heavy-duty cylinder is standard equipment on the Model 66-G!

Grind shrub and tree trimmings from 3/8" to 3" depending on machine and power of unit.

### W-W Models for Garden Tractors

Your garden tractor furnishes the power, and W-W furnishes the models that give performance. V-Belt pulley of proper size is furnished for tractors with standard engines. A stabilizer bar is provided which is simply and easily attached to the front of most garden tractors. For tractors not having a front-end frame, a special anchor plate is furnished for stabilizing support. Typical models are shown with models available for most tractors. Specify make and model of tractor when ordering.



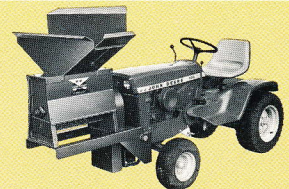
Big 20" Model 5 with standard heavy-duty 20" cylinder. Optional center shaft feed opening is available.



Model 5-N with stabilizer bar attached to garden tractor.  
Model 5-G with 2 1/2-hp gas engine.  
Model 5-E with 3/4-hp electric motor.



Model 5-VL with special attaching kit, coupling and front swivel wheel for Gravely tractors.



Direct mounting for riding tractors available. Model above is JD-14 for John Deere 140 Tractors. Model JD-7 for 112 Tractors. Features 20" cylinder, cutter bar, cutter knives, and quick-change hammer tips. Specify make and model.



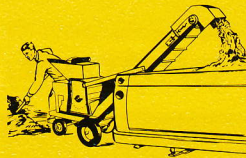
New Model "Big 5" -VL has 20" cylinder, cutter bar and quick-change hammer tips. PTO Kit is available at an extra charge.



# W-W SHREDDER-GRINDERS GO LARGER!

## THE W-W MODEL 7-EV for Nurseries and Greenhouses.

This W-W is designed as a multi-purpose shredder-grinder especially for nurseries and greenhouses. It handles all the normal jobs but is compact enough to work in a 36" aisle alongside the bench, and it will load directly into a standard truck or pickup. It's ideal for aerating soil on benches. The spout is adjustable for side or rear discharge. The elevator height is adjustable up to 5' and is equipped with an acid-resistant belt conveyor. The Model 7-EV is powered by an 8-hp engine and has capacity up to 15 yards per hour. Clutch is standard.



Model 7-EV with adjustable height elevator, 8-hp gas engine and clutch.  
Model 7-NE with 8-hp engine, less elevator and clutch.

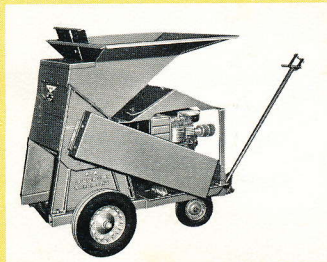
## HAS NEW 4-WHEEL PORTABILITY.

The Model 7-EV is now equipped with four ball-bearing wheels for easy "pull-along" mobility and steerable maneuverability. Handle also serves as a towing hitch behind cars or trucks.



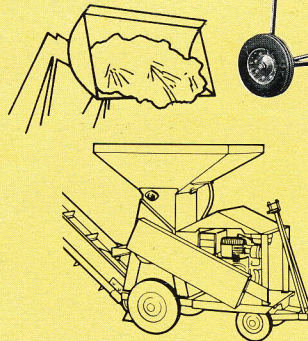
## THE HEAVY-DUTY MODEL 4-EV with Detachable Elevator

For top capacity and performance — up to 20 yards per hour, choose the Model 4-M, now with 4-wheel, steerable mobility. Steering handle serves as a towing hitch. To elevate and load the pile, add the Model 4-EO elevator. These two operate as an integral unit called the Model 4-EV, but are independently powered so they also operate separately. The Model 4-M has a new enlarged, 35" x 36" hopper and is powered by a 9-hp at 3200 rpm Briggs & Stratton engine. It has easily replaceable hammer tips which are reversible for double life. The elevator is powered by a 3-hp gear-reduction engine, loads up to truck heights of 7½' and has a 12" acid-resistant conveyor belt.



Model 4-M Shredder-Grinder only with standard 35" x 36" hopper and 9-hp engine.

- Model 4-M, Shredder-Grinder only with 9-hp engine.
- Model 4-EO, Elevator only with 3-hp engine.
- Model 4-EV, Combination of 4-M and 4-EO.
- Model 412-EV, Model 4 Shredder-Grinder with 36" x 52" hopper, and 16-hp engine, plus 4-EO elevator.
- Model 4-NEV, Same as 4-EV less 9-hp engine.
- Model 4, Shredder-Grinder only, less power.



**New OVERSIZE HOPPER FOR TRACTOR LOADERS.** The Model 4 Shredder-Grinder is available with an oversize 36" x 52" hopper to accommodate a tractor loader. It has a 16-hp engine and a power driven agitator. With the detachable elevator as pictured above it is identified as a Model 412-EV. A self-starting engine is optional.

## OTHER W-W EQUIPMENT THAT MAKES GARDENING EASIER!



**LEAF PICK-UPS and GARDEN CARTS** Leaf pick-ups suck up leaves just as a vacuum cleaner would and deposit them into hopper for processing. You just rake leaves to opening duct. Garden carts fit directly under grinding chamber of W-W Shredder-Grinders (except Model A). Material is loaded as it is processed. Hinged front panel (under grinder in above photo) drops down to permit raking direct from the cart.



**W-W ROTARY SCREEN** Removes rocks and stones from soil. Sifts soil through a 4-side perforated screen and deposits screened material under the unit; ejects unwanted material at opposite end. Each side has a removable screen. Powered by a 3-hp gear-reduction engine (electric available).



**HEAVY-DUTY SPREADER** This spreader is designed to handle compost and other organic materials which clog ordinary spreaders. Thickness of spread is regulated by lever on handle. Wide pneumatic tires roll easy...provide ample traction for twin agitators. Has 2½ cu. ft. capacity.

### SPECIFICATIONS

Model	Hopper Opening At Top	Max. Hourly Capacity	Horsepower Gas	Horsepower Elec.*	Pulley Size
A-G, A-E & 5-N	15" x 17"	5 yards	2½	¾	4"
2-G & 2-E	9½" x 30"	10 yards	3	1	5"
62-G & 62-E	9½" x 36"	11 yards	5	1½	5"
66	11" x 36"	12 yards	8	3	5"
5-20-4	16" x 20"	13 yards	8	3	5"
7-EV	21" x 20"	15 yards	8	—	4"
4-EV	35" x 36"	20 yards	9	—	6"
412-EV	36" x 52"	35 yards	16	—	6"

Ball Bearings are standard on above equipment.

\*Electric motors are 115/230V, capacitor start, ball bearing. Ten feet of cord furnished.

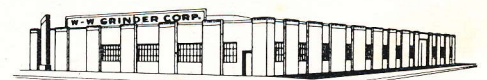
### SCREENS

All Shredder-Grinders are equipped with Shredder rods or roller rods and screen as standard equipment. Screens with ¾" perforations are furnished as standard unless otherwise specified. Screens are available with perforations of following sizes:

½" ¾" 3/8" ½" 5/8" ¾" 1" 1¼" 1½" 2"

Because of our desire to improve products, specifications and design are subject to change without notice.

IMMEDIATE PARTS SERVICE FOR ANY MACHINE EVER MANUFACTURED



WORLD'S LARGEST MANUFACTURER OF SHREDDER-GRINDERS  
**W-W GRINDER CORP.** WICHITA, KANSAS 67219  
316/838-4229