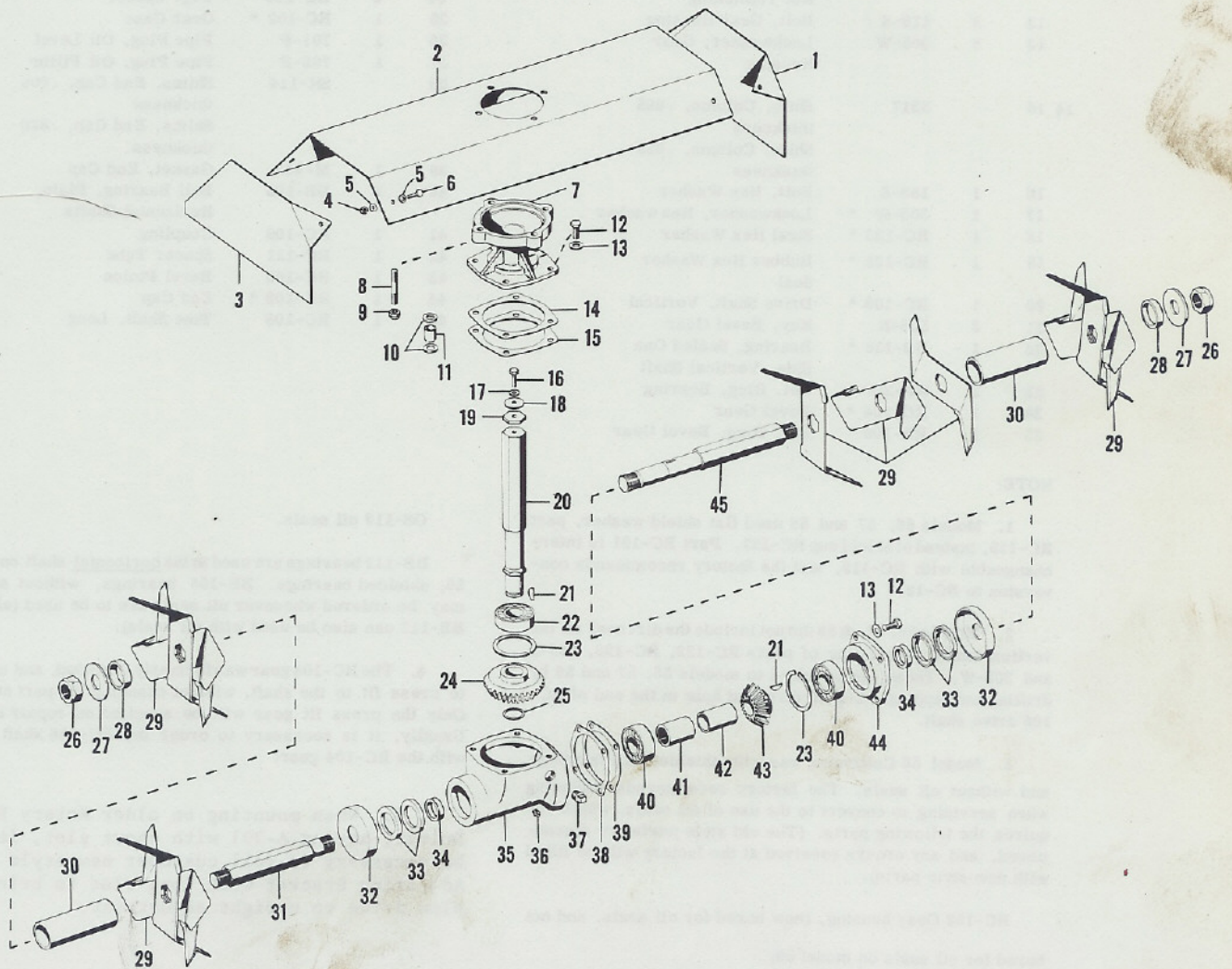


Model Nr. _____
Effective Date: 3-15-65
Form Number: PL-121

To continue its program of quality and design improvement, the manufacturer reserves the right to change specifications, designs or prices without notice and without incurring obligation.



(Covers Models 56, 57, 58-A, and 358. Model Numbers are stamped on the Gear Housing. When ordering parts, be sure to refer to the Model Numbers. This list shows parts and prices for the current model, 358 (which is identical to 58-A). Parts for older models are discussed in the "notes", and asterisks (*) are used to show parts which are so discussed.)

Photo No.	No. Req'd	Part No.	Description	Photo No.	No. Req'd	Part No.	Description
1	1	RC-116-B	Left End Dirt Shield	26	2	225-N	Nut, Tine Shaft
2	1	RC-115	Dirt Shield	27	2	412-W	Washer, Tine Shaft Nut
3	1	RC-116-A	Right End, Dirt Shield	28	2	RC-114	End Spacer
4	6	201-N	Nut, Dirt Shield	29	12	RC-110	Hoe Tine
5	12	401-W	Washer, Dirt Shield	30	2	RC-113	Tine Spacer
6	6	164-S	Bolt, Dirt Shield	31	1	RC-107	Tine Shaft, Short
7	1	RC-101	Column Casting	32	2	RC-121 *	Shield Cup
8	4	RC-117	Column Stud	33	2 or 4	OS-113 *	Oil Seal, Use one seal each side if 7/16" thick seal supplied, or 2 seals each side if 1/4" thick seal supplied.
9	4	243-N	Nut, Column Stud				
10	8	403-W	Washer, for 3213 Spacers				
11	4	3213	Spacer, for Rotary Plow Nut Tightening	34	2	RC-118	Brg. Spacer
12	8	110-S	Bolt, Gear Housing	35	1	RC-102 *	Gear Case
13	8	305-W	Lockwasher, Gear Housing	36	1	701-P	Pipe Plug, Oil Level
				37	1	702-P	Pipe Plug, Oil Filler
14 15		5317	Shim, Column, .005 thickness Shim, Column, .020 thickness	38		SH-114	Shims, End Cap, .005 thickness Shims, End Cap, .020 thickness
16	1	183-S	Bolt, Hex Washer	39	1	M-488	Gasket, End Cap
17	1	303-W *	Lockwasher, Hexwasher	40	2	BB-105	Ball Bearing, Plain, Horizontal Shafts
18	1	RC-123 *	Steel Hex Washer	41	1	RC-109	Coupling
19	1	RC-122 *	Rubber Hex Washer Seal	42	1	RC-111	Spacer Tube
20	1	RC-106 *	Drive Shaft, Vertical	43	1	RC-105	Bevel Pinion
21	2	508-K	Key, Bevel Gear	44	1	RC-103 *	End Cap
22	1	BB-112 *	Bearing, Sealed One Side, Vertical Shaft	45	1	RC-108	Tine Shaft, Long
23	2	RR-207	Ret. Ring, Bearing				
24	1	RC-104 *	Bevel Gear				
25	1	RR-105	Ret. Ring, Bevel Gear				

NOTE:

1. Models 56, 57 and 58 used flat shield washer, part RC-119, instead of shield cup RC-121. Part RC-121 is interchangeable with RC-119, and the factory recommends conversion to RC-121.

2. Models 56, 57, & 58 did not include the dirt seal on the vertical shaft, consisting of parts RC-122, RC-123, 183-S and 303-W. These can be added to models 56, 57 and 58 by drilling and tapping a 1/4-20 threaded hole in the end of RC-106 drive shaft.

3. Model 56 Cultivator was with shielded ball bearings and without oil seals. The factory recommends replacing when servicing to convert to the use of oil seals, which requires the following parts: (The old style parts are discontinued, and any orders received at the factory will be filled with new style parts).

RC-102 Gear housing, (now bored for oil seals, and not bored for oil seals on model 56).

RC-103 end cap (now bored for oil seals, and not bored for oil seals on model 56).

RC-118 spacer, replacing RC-112 spacer.

OS-113 oil seals.

BB-112 bearings are used in the horizontal shaft on model 56, shielded bearings. BB-105 bearings, without shields, may be ordered whenever oil seals are to be used (although BB-112 can also be used with oil seals).

4. The RC-104 gear was formerly threaded, and changed to press fit to the shaft, without changing the part number. Only the press fit gear will be supplied on repair orders. Usually, it is necessary to order the RC-106 shaft, along with the RC-104 gear.

5. When mounting on older Rotary Plow Drives, having A-301 with short slot, it will be necessary to sell customer new style A-301 Adjusting Bracket with long slot to bring plow drive to upright adjustment.