

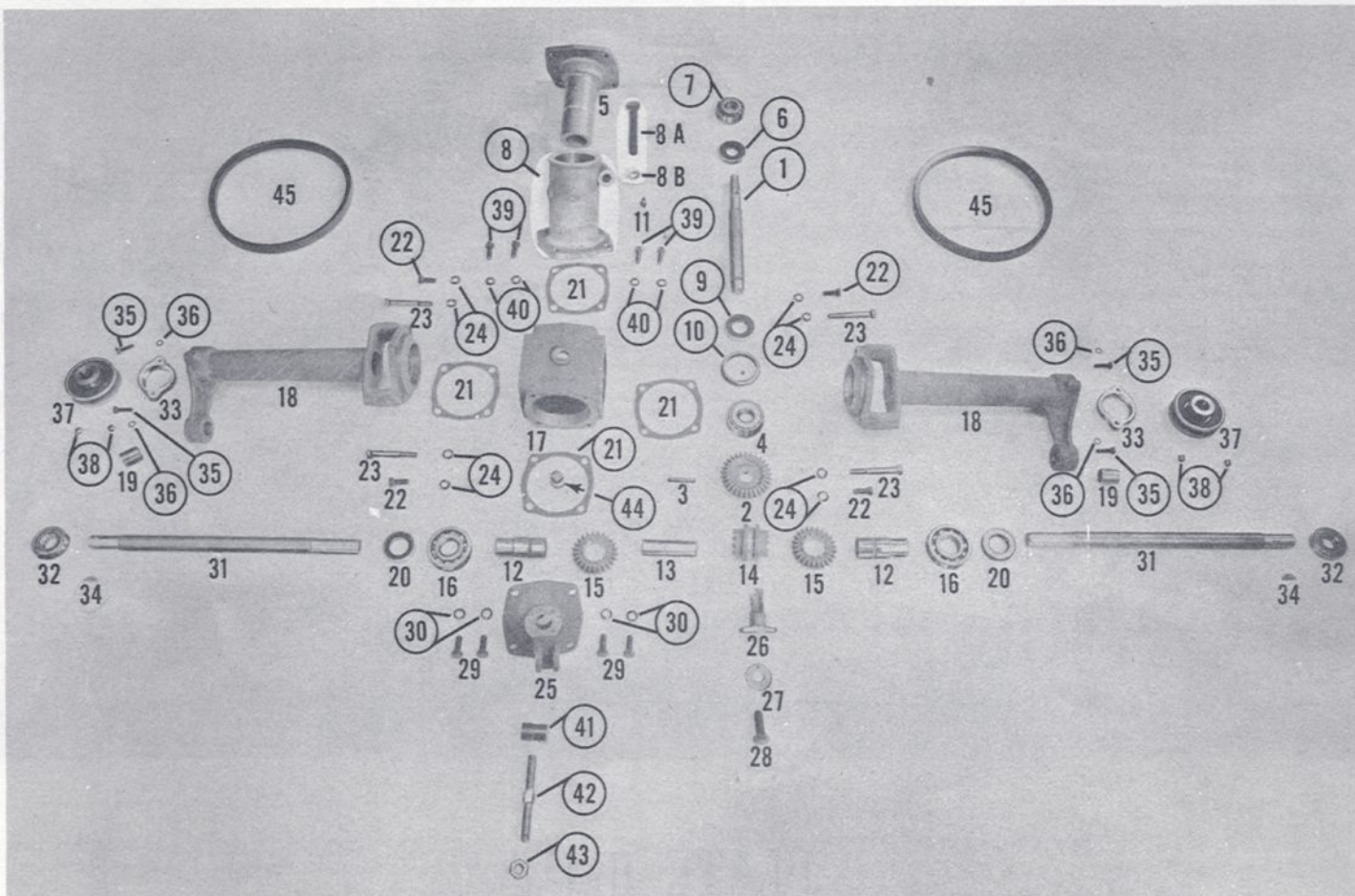
# GRAVELY REEL MOWER

## ILLUSTRATED PARTS AND PRICE LIST

EFFECTIVE OCTOBER 1, 1957

PRICES SUBJECT TO CHANGE WITHOUT NOTICE

KEY: NS-NOT SHOWN NN-NO PART NUMBER, ORDER BY DESCRIPTION



## PLATE RM 1

Photo No.	Part No.	Description	Price	Photo No.	Part No.	Description	Price	Photo No.	Part No.	Description	Price
1	M 445	Drive Shaft	2.63	16	M 458	Inner Cross Shaft Bearing	4.13	32	M 323	Outer Cross Shaft Bearing	3.91
2	M 440	Bevel Gear	6.99	17	M 152	Gear Housing	8.23	33	M 158	Outer Cross Shaft Brg. Retainer	.75
3	M 489	Bevel Gear Rivet	.02	18	M 156	Drive Column Housing	2.43	34	504-K	Cross Shaft Key (Woodruff)	.02
4	L 610	Drive Shaft Bearing	3.96	19	M 502	Pivot Stud Bearing Bushing	.23	35	183-S	Outer Cross Shaft Brg. Retainer	.03
5	M 150	Drive Shaft Housing	5.09	20	M 465	Cross Shaft Bearing Seal	1.14			Cap Screw	
6	M 459	Outer Drive Shaft Bearing Seal	1.14	21	M 488	Gear Housing Gasket	.06	36	303-W	Outer Cross Shaft Brg. Retainer	.01
7	3147	Drive Shaft Bearing Complete	3.96	22	110-S	Gear Housing Bolt, Short	.07			Cap Screw Lock Washer	
8	M 181	Swivel Casting	5.05	23	192-S	Gear Housing Bolt, Long	.11	37	M 137	Outer Drive Pulley (3")	1.43
8A	172-S	Swivel Casting Bolt	.18	24	305-W	Gear Housing Bolt, Lock Washer	.01	38	801-A	Outer Drive Pulley Set Screw	.18
8B	241-N	Swivel Casting Bolt Nut	.15	25	M 153	Strut	3.05	39	110-S	Gear Housing Bolt, Short	.07
9	M 530	Inner Drive Shaft Bearing Seal	1.49	NS	701-P	Strut Oil Level Plug	.07	40	305-W	Gear Housing Bolt Lock Washer	.01
10	Discontinued			26	M 164	Shifting Fork	2.67	41	M 356	Height Adjusting Lock Washer	.35
11	903-G	Swivel Casting Alemite Fitting	.11	27	410-W	Shifting Fork Bolt Flat Washer	.01	42	M 352	Height Adjusting Screw	.57
12	M 439	Driving Socket	1.90	28	152-S	Shifting Fork Bolt	.11	43	211-N	Height Adjusting Screw Lk. Nut	.04
13	M 485	Cross Tube	.44	29	110-S	Strut Bolt	.07	44	702-VP	Gear Housing Plug	.15
14	M 438	Driving Dog	4.55	30	305-W	Strut Bolt Lock Washer	.01	45	M 475	Drive Belt	1.18
15	M 441	Bevel Pinion	6.26	31	M 446	Cross Shaft	2.48				



