

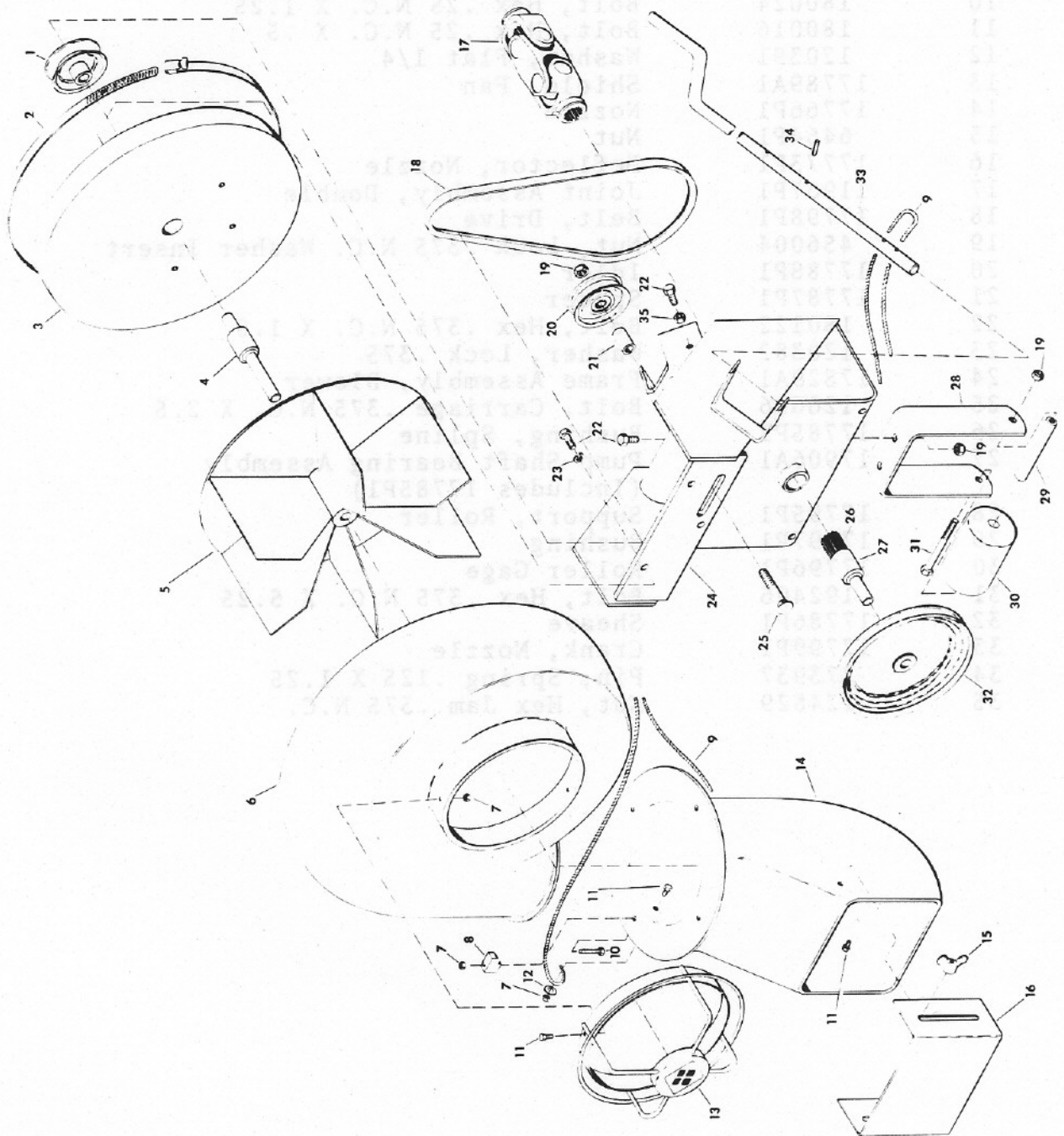


To continue its program of quality and design improvement, the manufacturer reserves the right to change specifications, design or prices without notice and without incurring obligation.

ILLUSTRATED PARTS LIST

LEAF BLOWER ATTACHMENT
2 Wheel Tractor

Model Number 17303E1
Effective Date Aug. 1, 1970
Form Number 17968P1



<u>ITEM NO.</u>	<u>PART NO.</u>	<u>DESCRIPTION</u>
1	17758P1	Sheave
2	17765P1	Clamp
3	17830A1	Support Assembly, Fan (Includes 17757P1)
4	17757P1	Pump Shaft Bearing
5	17759A1	Impeller Weldment
6	17763P1	Housing, Fan
7	9419454	Nut, Lock .25 Washer Insert
8	17767P1	Clamp, Nozzle
9	17800P1	Rope, Crank
10	180024	Bolt, Hex .25 N.C. X 1.25
11	180016	Bolt, Hex .25 N.C. X .5
12	120391	Washer, Flat 1/4
13	17789A1	Shield, Fan
14	17766P1	Nozzle
15	6464P1	Nut
16	17773P1	Deflector, Nozzle
17	11967P1	Joint Assembly, Double
18	17798P1	Belt, Drive
19	456004	Nut, Lock .375 N.C. Washer Insert
20	17788P1	Idler
21	17787P1	Spacer
22	180122	Bolt, Hex .375 N.C. X 1.0
23	120382	Washer, Lock .375
24	17829A1	Frame Assembly, Blower
25	126696	Bolt, Carriage .375 N.C. X 2.5
26	17785P1	Bushing, Spline
27	17906A1	Pump Shaft Bearing Assembly (Includes 17785P1)
28	17795P1	Support, Roller
29	17797P1	Bushing
30	17796P1	Roller Gage
31	192406	Bolt, Hex .375 N.C. X 5.25
32	17786P1	Sheave
33	17799P1	Crank, Nozzle
34	273937	Pin, Spring .125 X 1.25
35	124829	Nut, Hex Jam .375 N.C.