

The Gravely Gazette

Vol. 1, No. 3

Published by Gravely Tractors, a division of Studebaker Corporation, Dunbar, West Virginia, to help Gravely users realize greater satisfaction and enjoyment from their equipment.

October 1962

Leaves Away; Backache's Gone

No more blistered hands, no more backaches—Gravely's new Leaf-Away attachment has been designed to eliminate these common fall ailments associated with leaf removal.

Nothing could be simpler than just driving your Gravely over the lawn while the Leaf-Away mulches and sacks the leaves for you. There is no more need for hand raking; no more leaves to dispose of during the hazardous fire season months when many states prohibit debris burning.

The Leaf-Away cleans while you mow—you actually perform two operations in one. The big bag holds lots of leaves. All you do to empty it is to pull a heavy duty zipper.

Your Gravely representative will be happy to show you this efficient way of keeping your grounds free of leaves.

SELF STARTER SAVES STAMINA

The electric starter has continued to gain in popularity until now nearly half of all Gravelys sold are equipped with it. The starter has removed all of the drudgery from the starting operation. It's especially helpful to the ladies.

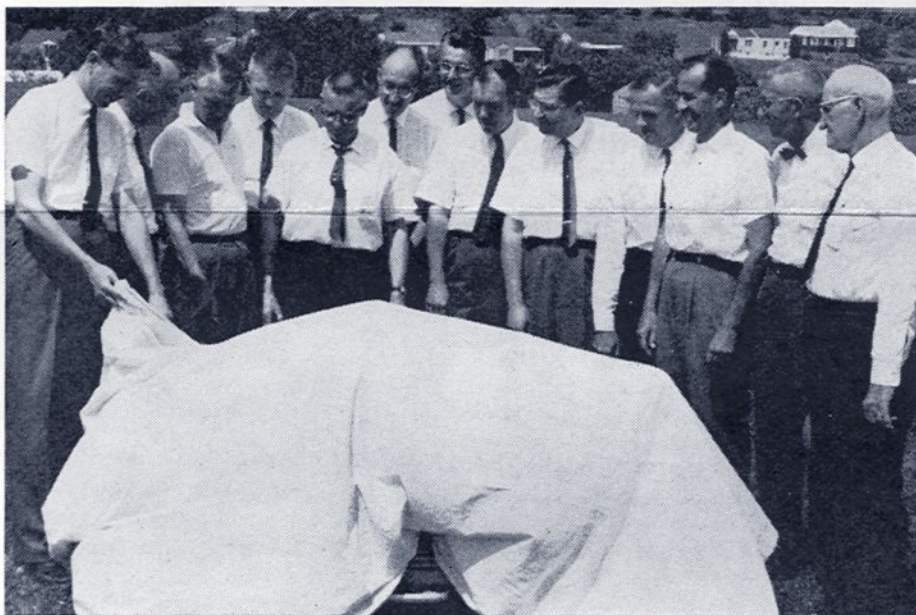
The starter is operated by a six-volt battery. A charging unit can be obtained from your Gravely representative at little cost. The unit plugs into regular house current and keeps the battery at full charge, so that you have plenty of power when you need it.

The starter unit is fully adaptable to older model tractors. If you would like to convert yours to push button starting, Season Service would be a good time to get it done.

How Long?

How long has it been since you've treated yourself and your tractor to a new labor-saving attachment? There are more than 30 to choose from. There's no need to fight work when you have a Gravely—enjoy it!

Dealer Board Given Preview



A constant program of research is carried out by Gravely. In the photo above Gravely President Kenneth Thomas gives a nine-man Dealer Coordination Board a preview look at an experimental model. The nine members represent dealers in all parts of the United States and Canada. They are selected to the board because of their outstanding ability in the sales organization.

Left to right are Mr. Thomas; L. Rhoads, Gravely engineering director; E. Thomson, Montreal; T. Gaylor, Gravely sales manager; P. Burrows, Tacoma, Wash.; R. Bear, Cleveland; N. Richardson, Baltimore; G. Wohlers, Springfield, Ill.; T. Sperandio, Newton Centre, Mass.; F. Roush, Gravely manufacturing manager; R. Rushmore, Long Island, N.Y.; J. Kraai, Oneco, Fla.; and J. Appel, Baton Rouge.

TO YOUR ADVANTAGE

Along about now, with the cold, hard winter approaching you may find your Gravely dealer easy to take advantage of if you're thinking of a new tractor. You will enjoy new power and all the latest improvements, much below the cost you'd expect to pay.

Why not invite your Gravely representative to call on you? Or when you take your tractor in for Season Service discuss your needs with him. You'll be under no obligation and you may just come away with that shiny new tractor, or new attachment, that you've long been wanting.

Compost Shredder New Use Multiplier

The Kemp Compost Shredder is a new Use Multiplier item for the Gravely tractor. It operates off the Gravely Rotary Mower Drive, providing dependable power to grind cornstalks, grass clippings, leaves and other organic matter ready for the compost heap.

The rotating heads, of malleable iron, are carefully balanced to eliminate vibration. They hold the special heat-treated shredding teeth which are staggered so that

(Continued on Page 3)

Open House Marks 40th Anniversary

A 40th anniversary open house was held at the Gravelly Tractors Dunbar plant on Sunday, May 20th. From 1:30 to 5:00 p.m. the entire factory was on display to the public. A special advance tour was conducted at 1:00 p.m. for state and local officials and other dignitaries. An estimated 1500 people visited the plant during the day.

Lanes were roped off through the plant for the visitors to follow, with signs identifying points of interest. Guides were stationed in each section to answer questions. Various displays were arranged throughout the tour route, showing production processes and the finished parts.

Forty years ago, in 1922, Gravelly was founded in Dunbar by B. F. Gravelly, and the first tractor, the Model D, was produced. In 1939 the Model L was introduced. This model has made the name Gravelly famous for versatility and dependability the world over.

Improvements have been made to the tractor through the years, and there are now more than 30 attachments. The Dunbar factory has been enlarged and a constant program of modernization with the latest in equipment has been the rule. There are two other plants in this country—Albany, Georgia, and Fort Scott, Kansas—and one overseas installation, in England.

Since May 1960 Gravelly Tractors has been a division of Studebaker Corporation.

SPRAYER ADAPTS TO MANY USES

Gravelly's new 20-gallon Utility Sprayer attachment has proven popular for spraying the lawn, garden, trees, shrubs and for many other spraying jobs. The pump, with its long-lasting, corrosion-proof valves, gives a maximum of 400 pounds pressure and is driven directly by the Gravelly engine.

There are four interchangeable orifices for the single gun jet. You get a wide variety of sprays from high-capacity stream sprays to wide-angle, boom-type sprays.

The unit is excellent for spraying livestock, washing down dairy barns, poultry houses, or any of a variety of jobs where disinfectants or detergents are needed. The tank is treated with epoxy resin to protect against corrosive or abrasive sprays.

This compact unit can easily maneuver between garden rows. It has a low center of gravity and two free-moving, five-inch tires, for easy handling.

Improvements Made To 50-Inch



Several changes have been made to Gravelly's 50-Inch Mower since last season when a limited quantity was put on the market. According to these tests in the field, kinks have been ironed out and the mower has been perfected for full scale production to meet the anticipated demand next season.

The new 50-Inch Rotary Mower will reduce your mowing time. It is designed only for lawn mowing on all but the steepest slopes. Tougher mowing jobs—weeds and brush—should be handled with the 30-Inch Rotary or the Sickle Mower.

A unique feature of the 50-Inch Mower is the easily adjusted mowing height from one to four inches. Three rotary blades provide clean-cut action. There are no windrows left after this mower has gone over the lawn. The load placed on the Gravelly engine is lighter than that placed by the reel gang mowers.

Special anti-scalping skids keep the mower from digging into irregular humps in the lawn and carry it over most uneven lawn surfaces.

The mower is supported by front caster wheels. Since the blades are behind the wheels no wheel marks are left on the lawn. The skids touch the ground only on uneven surfaces.

Dear Gravelly:

By Ona Gravelly

My husband used to always be kind and considerate. He treated me like a queen. Recently he bought a Gravelly and now he ignores me. What can I do to become "first" again?

Second Place

Dear Second Place:

Buy a Gravelly yourself. You will then have a common point of interest with your husband. The two of you might even form a Gravelly Club. Quite often warm and lasting friendships are formed through the mutual interest of clubwork.

My neighbor begins work with his Gravelly at five o'clock each morning. I like to sleep late. Although the Gravelly has a wonderful sounding engine, at five o'clock in the morning I hate it, I hate it, I hate it.

Bleary Eyed

Dear Bleary Eyed:

You might suggest, tactfully of course, that your neighbor buy a Muffle Tone attachment. If he doesn't . . . have you thought of learning to play the trumpet at two o'clock in the morning?

GRAVELY USE MULTIPLIERS

To help you obtain more benefits from your Gravelly tractor there are ten "use multiplier" attachments available from your Gravelly representative. These specialized tools are made by other manufacturers but they have been tested and approved by Gravelly.

The Muffle Tone—High-pitched sharpest tones of the tractor are much reduced by this specially designed muffler. Especially handy in areas around schools and hospitals where noise must be kept to a minimum.

Battery Charger—This charger insures that you will always have a battery fully charged. Use it on your car too—for both 6 and 12 volt systems.

Engine Heater—Get fast starts on cold mornings. The heater is attached to the tractor crankcase and then connected to an electrical outlet. In less than 20 minutes the engine and crankcase are warmed.

24-Inch Lawn Aerator—Specially designed spikes penetrate and let moisture and air in, allowing easy fertilization of your lawn. Spikes are reversible for rough or smooth lawn spiking. Contoured riding seat is mounted on seat spring for comfort.

Blitz-Fog Thermaline Gun—Lay a penetrating fog to free outdoor areas of insect pests. Attaches easily to tractor. Engine does all the work.

Lawn Sweeper—Brushes up grass cuttings, leaves and litter in its large self-dumping hopper. Clears a 30-inch path. Attaches to the Gravelly sulky. (The Estate Master combination, gang hitch, and three sweepers, provides a 76-inch sweep.)

Gravelly Utility Pump—For pumping water, high-volume, low pressure pump operates from Gravelly Power-Take-Off attachment.

1500 Watt Generator—Provides 1500 watts of power anywhere at any time. Power Take-Off and Governor required.

Single Row Seeder—Row, seed and cover in one operation.

Kemp Compost Shredder—(See story elsewhere)

Nylon Replaces Leather

There's a new look in Gravelly starter straps this year—nylon. The new nylon straps will replace the leather ones which have been used on all manual starting Gravellys. The nylon straps will wear much longer than the leather type, are longer for easier starting, and will take more strain without breaking.

Compost Shredder

(Continued from Page 1)



material is ground fine enough to pass through the strong screen at the bottom of the shredding drum.

A special control keeps stones from damaging any part of the Shredder. An ejector door provides easy access to remove material which might slow Shredder action.

The Shredder has been especially adapted for use with the Gravelly tractor through the 30-Inch Rotary Mower drive and it has been thoroughly tested and proved. For delivered prices and complete information consult your Gravelly representative.

User Book Completed

A 128-page book is now being mailed to Gravelly owners who participated in the Questionnaire survey which was issued some time ago by Mr. James Hare. Almost 8,000 users took time to fill out a questionnaire, providing valuable information about their uses of Gravelly equipment.

The illustrated "pocket book" size publication will have many helpful suggestions and should be a good exchange of information among Gravelly users.

HERE'S CHECKLIST FOR WINTERIZING

Although it's been said many times before, if you use your Gravelly year-round you should be sure to "winterize" it. Here's a fast check list:

Use Winter Mobiloil Arctic (SAE 20W) or Mobiloil Special (10W-30) in the crankcase.

Use Mobiloil 90 (SAE 90) in the attachment gear housings.

If you won't be able to store your tractor in a warm place, an Engine Heater will insure instant starting in the coldest weather. (Heater can be obtained from your dealer at little cost.)

Keep a full tank of gasoline. Moisture doesn't have a chance to form on the inside of the tank, and thus form ice.

Keep the vent on the gas tank cap open. If it becomes clogged, a vapor lock will occur, stopping the engine.

Gravelly Receives Versatility Award



Mr. Thomas, left, and Max Hess

Gravelly was honored on May 10 when President Kenneth Thomas received the Hess award in ceremonies in the Waldorf-Astoria Hotel in New York. Gravelly was chosen as the recipient of the award for versatility in design and use of its multi-purpose tractor.

The Hess awards were originated in 1950 by Max Hess, nationally known retailer of Allentown, Pa., to encourage the creation of superior multiple use products.

There were 8,000 items from manufacturers, designers and inventors from all parts of the world reviewed for honors this year, with Gravelly being one of the entrants singled out for an award.

Gravelly is currently in the 40th year of production of tractors and attachments, having gained a reputation of worldwide prominence through its export business.

Governor's Citation

On May 16 W. W. Barron, Governor of West Virginia, issued in Statehouse ceremonies a special citation to Gravelly Tractors commending Gravelly for its modernization, clean-up, and the attractive new appearance of the Dunbar plant. Shown accepting the award, right, is Mr. Kenneth Thomas, president of Gravelly Tractors.

There were 3,500 gallons of paint applied to the Gravelly plant in Dunbar. Extensive grounds cleaning was carried out with the cooperation of the City of Dunbar. The vast improvement which resulted earned Gravelly the citation from the Governor.



Season Service—Best Time

Season Service time is the best time to have improvements made to your Gravelly equipment. Whenever a factory improvement is made on a new model, it can be adapted to the older ones as well. This is part of the engineering policy at Gravelly. During Season Service many of these improvements can be incorporated on your tractor with little additional work.

Here's a list of some of the improvements which you may want to add to your tractor: Full Flow Oil System; Bronze Valve Guides; Sediment Bowl Improvement; Cast Iron Bonded-Lining Clutches; Shifter Wear Block; Throttle Improvement; Improved Air Cleaner; Governor; Valve Plunger Guide and Cover; New Rotary Mower Blade; New Snow Plow Hitch.

DOUBLE FILTER DETERS DIRT

A special two-stage air filter now used on the Gravelly tractor serves as double protection for the Gravelly engine. An oil-bath pre-cleaner removes up to 25 per cent of the dirt and grit. A second stage Dacron felt element filters the remaining dirt and grit particles.

The engine will be protected from dirty air after the Double Air Guard filter is installed. If the cleaning elements become completely clogged the engine will stop for lack of air—built in protection for your engine.

The Dacron filter unit is reusable. Just clean, re-oil and use again and again.

The special protection is available for all Gravelly tractors. A good time to have a Double Air Guard filter installed is now—during Season Service.

SNOW WOE GOES FAST

There's no need to fight snow each year. Winter can be enjoyed for its beauty when you remove snow and ice the easy way—with any one of four Gravelly snow removal tools.

Snowblower

There's the Snowblower which can clear snow up to four feet deep, either hard-packed or powdery, and throw it up to 30 feet, over the top of the deepest drift. Clears a path 26 inches wide, too. The all-gear drive has no belts or chains to slip and cause trouble.

Snow Blade

Or there's the 48-inch Snow Blade which clears a walk in just one pass, or a driveway in two. The wide blade really makes easy work of removing snow and ice. Just attach the blade; your Gravelly tractor does the work for you.

Power Brush

Light snows can be swept away with the Power Brush. Sweep down to the surface in one easy operation. Particularly useful for long drives and walks, the Power Brush can be used year-round for all sweeping jobs.



Power Spreader

The performance of the Power Spreader, the Gravelly attachment used for ice control, has been greatly improved through several significant changes. One of the major ones, aimed at providing ease of service, permits the servicing of the tractor with the Spreader still in place. Only two wing nuts need be removed.

A more even distribution system has been developed by the use of two slotted openings and a new baffle system which allows a better spread on each side of the unit. The spread width can be varied by the use of two levers at the operator's fingertips, providing an adjustment for each side. One side can be completely closed with the other open, which proves advantageous in some types of application.

The feeding system has been improved to insure a better distribution to the impeller blade. The speed of this blade has been reduced so that with some chemicals, such as calcium chloride, the chemical is not pulverized by the blade action.

The Spreader is highly popular with industry where large areas need to be treated.

