

# GRAVELY *Technical* BULLETIN



RECEIVED  
JUN 19 1962

BULLETIN NO. 966  
DATE: June 11, 1962  
TO: ALL OUTLETS

ANS. \_\_\_\_\_

- SUBJECTS:
1. Horsepower loss on tractors equipped with Gravelly double air-guard cleaner.
  2. New main drive casting for 50-inch rotary mower.
  3. Modified exhaust valve plunger guide and cover.
  4. Sprayer gun-jet stem cracking.
  5. Change in width of Parker lawn sweeper.

1. HORSEPOWER LOSS ON TRACTORS EQUIPPED WITH GRAVELLY DOUBLE AIR-GUARD CLEANER

Reports from the field have indicated that in certain instances the new Double Air-Guard Cleaner appears to cause the Tractor to lose horsepower.

Engineering has discovered that this problem is caused by the Air Hose being too long on some Tractors. When attached, the extra length causes a partial collapse (in a few cases, an almost-total collapse) of the Hose itself.

This condition has been corrected on production models. However, you should check your Tractors, for undoubtedly some have been shipped to you with the Hose too long.

If the Hose appears to be partially collapsed, simply shorten it next to the Air Cleaner to the point at which it retains its original round shape when attached to the Air Cleaner.

2. NEW MAIN DRIVE CASTING FOR 50-INCH ROTARY MOWER

Two important production changes have eliminated the problem of cracking of the ribs on the Main Drive Casting of the 50-inch Rotary Mower.

First as shown by 1 in Figure 2, the ribs of the Main Drive Casting, part number 6501, have been made stronger. For comparison, see the original Main Drive Casting in Figure 1.

(continued on back)

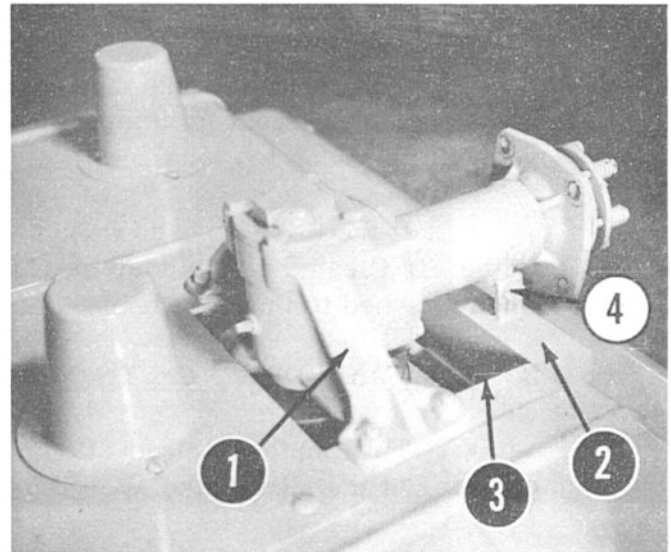
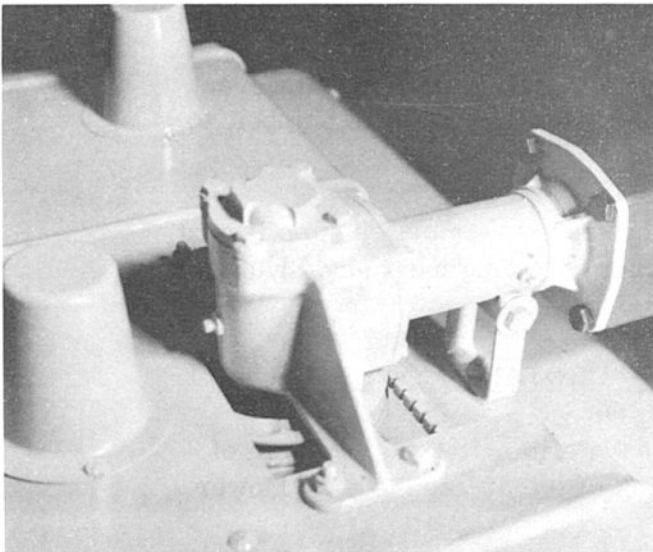
Second an Angle-Iron Bracket has been welded to the Main Drive Supports, part number 6513. This Bracket replaces the "U" Bracket which formerly was bolted directly to the Deck.

For field repair, it is necessary to order the new, stronger Main Drive Casting, part number 6501, and the Angle-Iron Bracket, part number 6521. NOTE: As stated above, on production models, the Angle-Iron Bracket is a part of the Main Drive Supports; however for field installation, the Angle-Iron Bracket is a separate part, part number 6521.

To make the changes in the field:

- a. Attach the 6521 Angle-Iron Bracket to the A-149 Swivel Casting Box and bolt in place. See 2 and 4 in Figure 2.
- b. Attach the Main Drive Casting to the Main Drive Supports.
- c. Drill  $13/32$  holes in the 6521 Angle-Iron Bracket and a  $13/32$  inch hole into the end of each Main Drive Support. See 3 in Figure 2.
- d. Attach the Angle-Iron Bracket to the Main Drive Supports with a  $3/8$  x 1-inch bolt, part number 111-S, mating nut, part number 228-N, and 305-W lockwasher.

##



3. MODIFIED EXHAUST VALVE PLUNGER GUIDE AND COVER

A slightly modified Exhaust Valve Plunger Guide and Cover, part number L-403-B, is now being produced. This has an additional groove which allows an oil return for oil "pumped" into the cover as the result of valve action. This modification will reduce the number and severity of oil leaks around this part.

4. SPRAYER GUN-JET STEM CRACKING

In cases where the aluminum Stem, part number 6065, of the 20-Gallon Sprayer's Gun-Jet cracks (users have reported cases of the Stem cracking along the threads), return the Stem assembly to the Station. A new brass Stem will be issued as a replacement part.

5. CHANGE IN WIDTH OF PARKER LAWN SWEEPER

The Parker Lawn Sweeper has been increased in sweeping width from 28 to 30 inches. This change was made by the manufacturer in the interest of presenting a product more suited to Gravely's needs. There is no increase in price.