

SECTION 1  
Installation

- 1.1 Remove the boot kit from the shipping container.
- 1.2 Remove the power discharge chisel.
- 1.3 Set the boot in position on the mower. Fasten with two 1/4-13x3/4 carriage bolts (from underneath), two flat washers, and two lock nuts.

# BOOT KIT

## 40" & 50" MOWER

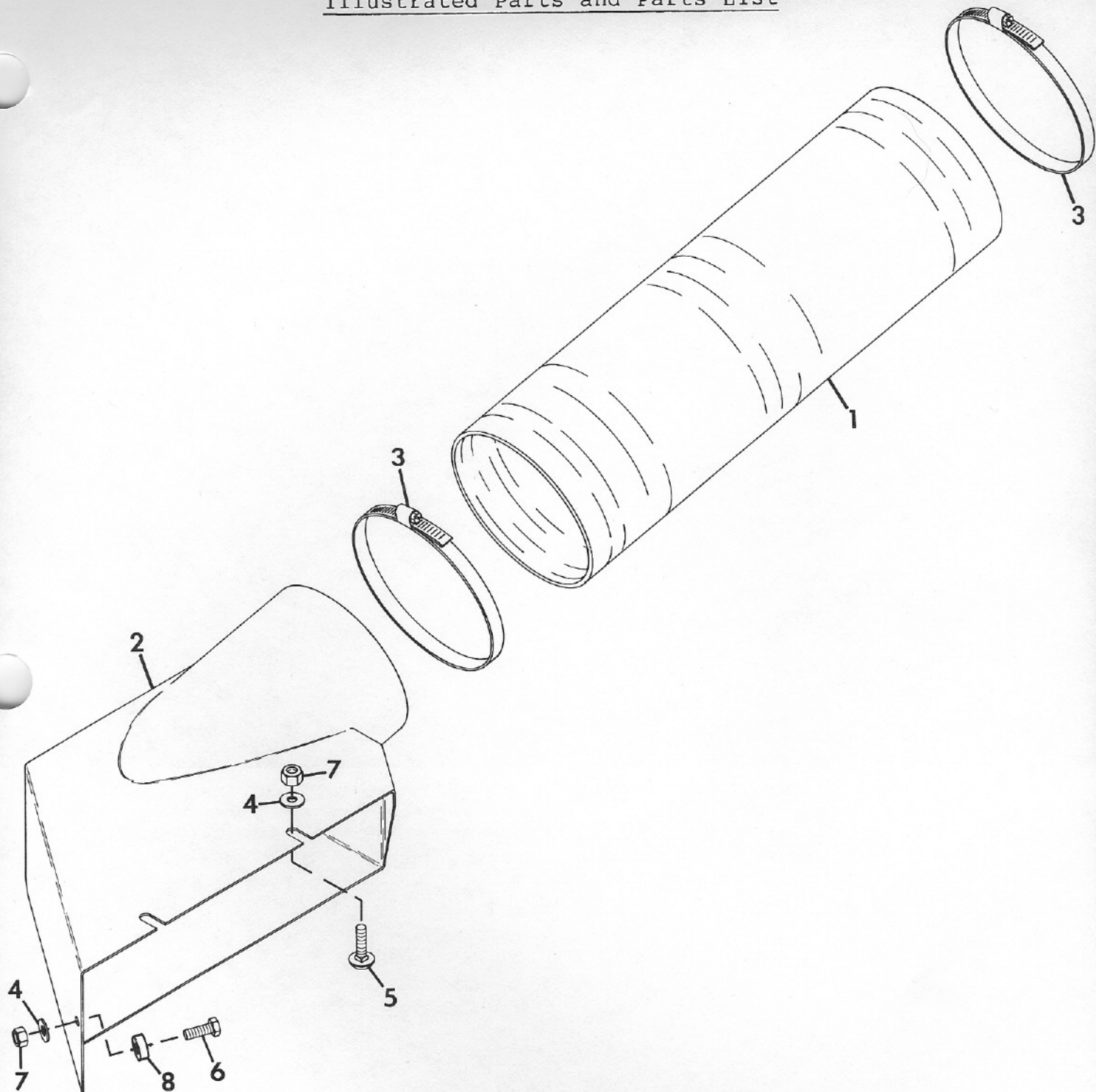
- 1.4 Drill the hole in the deck for a guide, drill a 1/2" diameter hole.
- 1.5 Insert bush in the hole. Install a 3/8-16 x 1 1/2 lock nut and a 3/8-16 lock nut. Secure with a flat washer and a 3/8-16 lock nut.
- 1.6 Put a clamp on each end of the hose. Fit one end of the hose on the boot and the other end on the blower inlet. Tighten the clamps.

SECTION 1

Installation

- 1.1 Remove the boot kit from the shipping container.
- 1.2 Remove the mower discharge chute.
- 1.3 Put the boot in position on the mower. Retain with two 3/8-16x3/4 carriage bolts (from underneath), two flat washers, and two lock nuts.
- 1.4 Using the hole in the front of the boot for a guide, drill a 3/8 diameter hole in the deck.
- 1.5 Insert bushing between boot and deck on 40" mowers. Install a 3/8-16 hex bolt from inside the deck in the new hole. Secure with a flat washer and a 3/8-16 lock nut.
- 1.6 Put a clamp on each end of the hose. Put one end of the hose on the boot and the other end on the blower inlet. Tighten the clamps.

## SECTION 2

Illustrated Parts and Parts List

ITEM NO.	PART NO.	QTY.	DESCRIPTION
1	36986	1	Hose, Mower to Blower
2	37841	1	Boot, 40"
	37840	1	Boot, 50"
3	36996	2	Clamp
4	120394	3	Washer, Flat .406x.812x.065
5	126227	2	Bolt, Carriage 3/8-16x.75
6	180122	1	Bolt, Hex 3/8-16x1.00 (50" mower only)
	180124	1	Bolt, Hex 3/8-16x1.25 (40" mower only)
7	456004	3	Nut, Lock 3/8-16
8	12657	1	Bushing, Reverse Idler (40" mower only)