



GRAVELLY®

816

**ILLUSTRATED
PARTS LIST**

GRAVELY LAWN AND GARDEN COMPACT RIDING TRACTOR

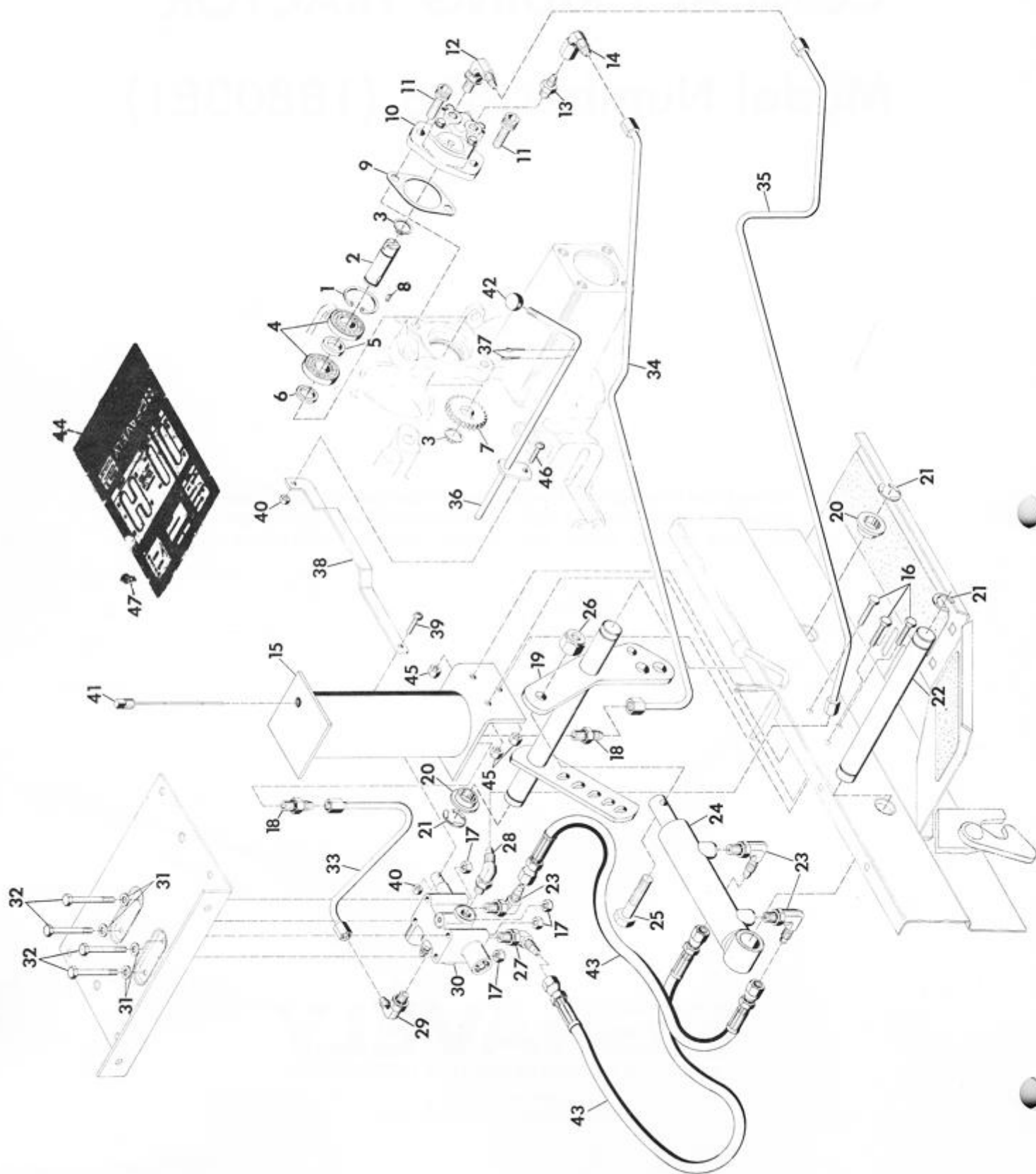
Model Number 816 (18803E1)

To continue its program of quality and design improvement, the manufacture reserves the right to change specifications, design or prices without notice and without incurring obligations.

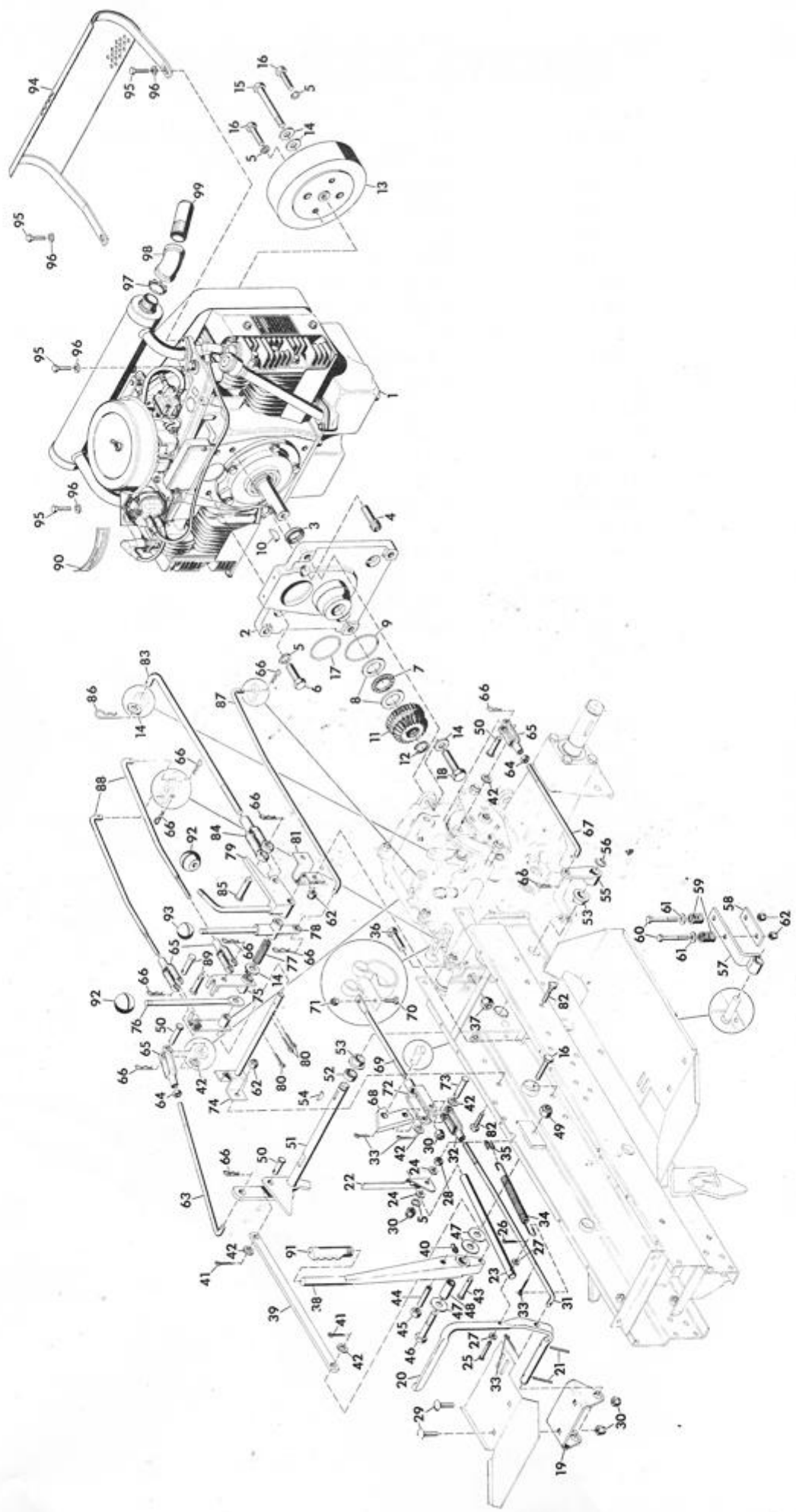
 **GRAVELY**
A DIVISION OF CLARKE-GRAVELY CORPORATION

1 GRAVELY LANE
CLEMMONS, NORTH CAROLINA 27012

HYDRAULIC SYSTEM



<u>ITEM NO.</u>	<u>PART NO.</u>	<u>DESCRIPTION</u>
1	18799P1	Ring, Retaining N5000-137
2	18797P1	Shaft; Hyd-Pump
3	18809P1	Ring, Retaining 5100-59
4	12626P1	Bearing, Ball .590 x 1.3780 x .433
5	18798P1	Spacer
6	18807P1	Spacer
7	18808P1	Gear, Hyd-Pump
8	271089	Key, Woodruff #213
9	18422P1	Gasket
10	18813P1	Pump, Hydraulic
11	426370	Screw, Cap 3/8-16 x 1 Hex Socket Hd
12	18816P1	Adapter
13	18817P1	Adapter
14	18818P1	Adapter
15	19161A1	Tank, Weldment Hyd
16	180122	Bolt, 3/8-16 x 1 Hex Hd
17	9419454	Locknut, 1/4-20 Washer Insert
18	19167P1	Adapter
19	18822A1	Lift Lever Shaft Weldment
20	11111P1	Bushing, Pivot
21	11112P1	E-Ring, No. X5133-98 Truarc
22	18830P1	Shaft Hydraulic Cylinder
23	18826P1	Adapter
24	19471P1	Cylinder, Hydraulic
25	180181	Bolt, 1/2-13 x 2 Hex Hd
26	435507	Locknut, 1/2-13
27	18827P1	Adapter
28	18829P1	Adapter
29	18828P1	Adapter
30	18825P1	Valve, Hydraulic
31	120392	Flatwasher, 9/32 x 5/8 x .065
32	180050	Bolt, 1/4-20 x 2-3/4 Hex Hd
33	19165P1	Line, Return (Valve to Tank)
34	19166P1	Line, Hydraulic (In) (Tank to Pump)
35	18843P1	Line, Hydraulic (Out) Valve to Pump)
36	18833A1	Rod, Weldment Hyd Valve
37	121224	Pin, Cotter 3/32 x 1
38	18836P1	Rod, Hydraulic Control
39	132848	Screw, Mach 10-24 x 1 Rd Hd
40	190254	Nut, Lock Mach 10-24 Washer Insert Hex
41	19413A1	Stick, Dip Hydraulic Tank
42	11261P1	Knob, Adjusting Control
43	18845P1	Hose, Hydraulic
44	20955P1	Plate, Control Cover Hydraulic
45	456004	Locknut, 3/8-16 Washer Insert
46	120910	Screw, Mach 10-24 x 3/4 Rd Hd
47	167257	Screw, Tapping 1/4-20 x 1/2 Pan Hd

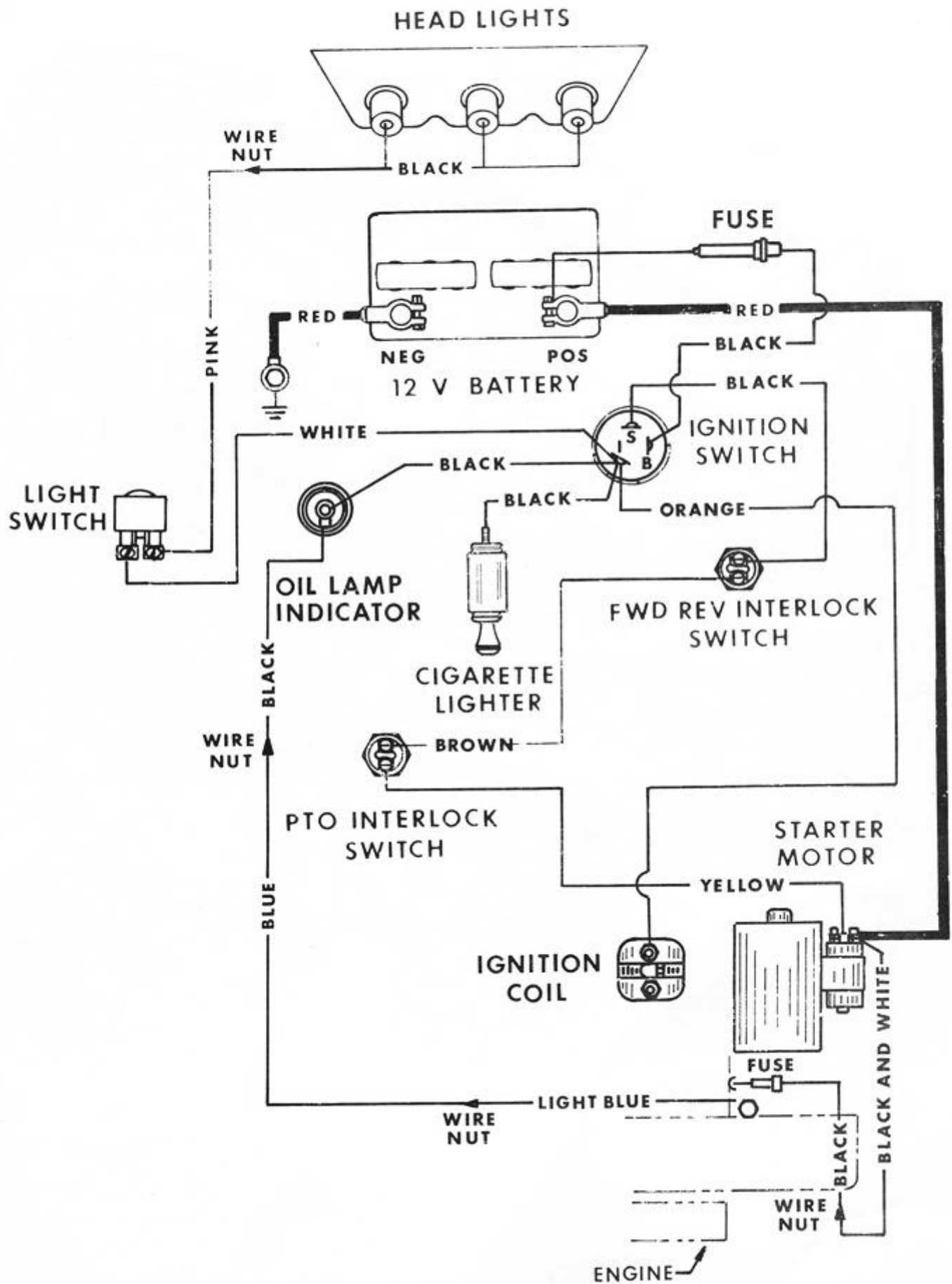


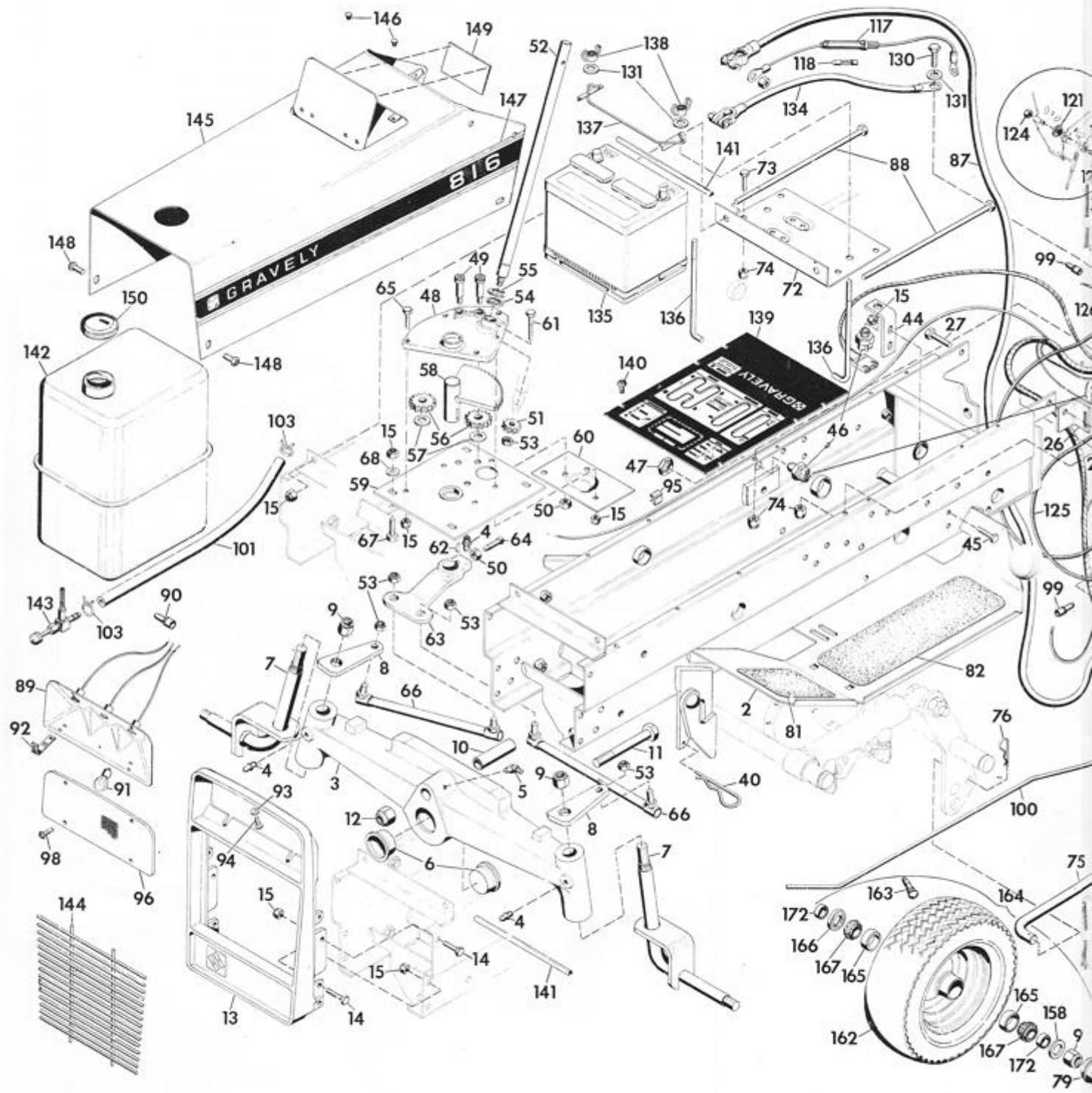
<u>ITEM NO.</u>	<u>PART NO.</u>	<u>DESCRIPTION</u>
1		Engine, 16.5 HP Onan CCKA
2	18427P1	Adaptor, Engine (Onan NB CCKA Engine)
3	18517P1	Seal, Oil Onan Eng. Adaptor
4	454475	Screw, Cap 3/8-16 x 1-3/4 Hex Socket Hd
5	120382	Washer, Lock 3/8 Sp.
6	180128	Bolt, Hex 3/8-16 x 1-3/4
7	18341P1	Bearing, Thrust
8	18342P1	Bearing, Thrust Race
9	18346P1	O-Ring 3 x 3-3/16 x 3/32
10	103909	Key, Woodruff 1/4 x 1-1/8 Soft No. 18
11	18343P1	Gear, Spur and Bevel Input
12	18344P1	Ring, Retaining
13	19599P1	Flywheel, Aux. Model 816
14	120396	Washer, Flat 17/32 x 1-1/16 x .095
15	19598P1	Bolt, Special 7/16-14 x 5
16	180124	Bolt, Hex 3/8-16 x 1-1/4
17	18347P1	O-Ring 2-1/2 x 2-3/4 x 1/8
18	180177	Bolt, Hex 1/2-13 x 1-1/2
19	11021P1	Bracket, Brake Pedal
20	11009P1	Pedal, Brake R.H.
21	454668	Pin, Spring 3/16 x 1-1/4
22	20772P1	Bracket
23	20773P1	Rod
24	20775P1	Washer, Nylon
25	9417923	Pin, Clevis 1/4 x 1.5
26	121223	Pin, Cotter 1/16 x .75
27	446179	Washer, Flat 1/4 x 1/2 x .049
28	124892	Nut, Jam 3/8-16 Hex
29	126227	Bolt 3/8-16 x 3/4 Rd Hd Sq Nk
30	456004	Nut, Lock 3/8-16 Washer Insert Hex
31	18379P1	Rod, Brake
32	18380P1	Clevis, 3/8-24 Adjustable
33	177923	Pin, Cotter 1/8 x 3/4
34	11263P1	Spring, Ext Type 5-1/2 x .50 x 20 Rate
35	11329P1	Clip, Spring
36	181700	Bolt, Hex 1/2-20 x 1-1/2
37	11058P1	Nut (Rim)
38	19062P1	Lever, Fwd-Rev.
39	18403P1	Link, Fwd-Rev. Shifter
40	9411027	Lube, Fitting 1/4-28
41	121222	Pin, Cotter 3/32 x .75
42	120394	Washer, Flat 13/32 x 13/16 x .065
43	9415571	Pin, Clevis 3/8 x 1.531
44	102623	Screw, Set 1/2-13 x 2 Cup Pt.
45	120238	Nut, Jam 1/2-13
46	180188	Bolt, Hex 1/2-13 x 2-3/4
47	120390	Washer, Flat 9/16 x 1-3/8 x .109
48	11074P1	Bushing .505 x .749 x 1-7/16
49	435507	Nut, Lock 1/2-13 Washer Insert Hex
50	138078	Pin, Clevis 3/8 x .948
51	18390A1	Shaft, Clutch Weldment
52	18485P1	Spacer .760 x 1.00 x .540
53	10174P2	Bushing
54	124552	Key, Woodruff 3/16 x 1 Hard No. 13
55	18395P1	Arm, Rev. Clutch
56	11270P1	Ring, Retaining

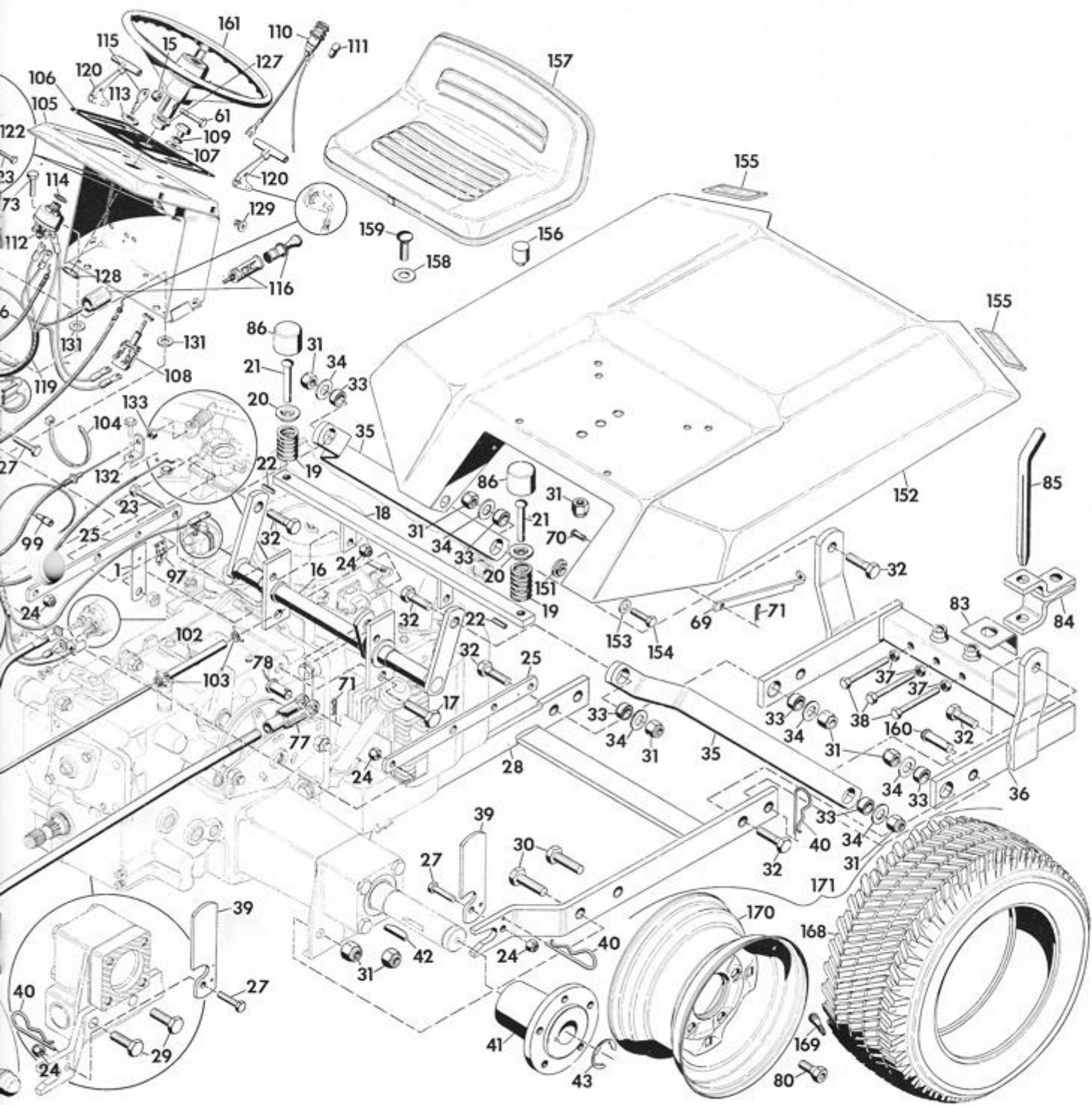
<u>ITEM NO.</u>	<u>PART NO.</u>	<u>DESCRIPTION</u>
57	18396A1	Bracket Weldment
58	18464P1	Plate
59	11779P1	Spring, Comp Type 1 x .78 x 338 Rate
60	180091	Bolt, Hex 5/16-18 x 2-1/2
61	120393	Washer, Flat 11/32 x 11/16 x .065
62	9419455	Nut, Lock 5/16-18 Washer Insert Hex
63	18400P1	Rod, Fwd Clutch
64	124925	Nut, Jam 3/8-24 Hex
65	18380P1	Clevis, 3/8-24 Adjustable
66	11860P1	Pin, Hair Cotter
67	18401P1	Rod, Rev. Clutch
68	18381P1	Cam, Brake
69	18382P1	Rod, Brake
70	180081	Bolt, Hex 1/4-20 x 5/8
71	9419454	Nut, Lock 1/4-20 Washer Insert Hex
72	18383A1	Clevis Weldment
73	18419P1	Pin, Clevis 3/8 x 1.840
74	18365A1	Shaft, Cross Weldment
75	18368A1	Arm, Shifter Weldment
76	18371P1	Lever, Shift
77	18372P1	Spring, Comp Type 2-3/4 x .625 x 34 Rate
78	18373A1	Control, 2 Speed Assembly
29	20662A1	Control, PTO
80	137185	Pin, Cotter 1/8 x 1
81	11096P1	Bracket, Cross Shaft
82	180077	Bolt, Hex 5/16-18 x 3/4
83	18386P1	Rod, PTO
84	18387P1	Yoke, 1/2-20 Adjustable
85	138086	Pin, Clevis 1/2 x 1.213
86	15691P1	Pin, Hair Cotter
87	18388P1	Rod, 2 Speed
88	18389P1	Rod, Shifting
89	11718P1	Pin, Clevis 3/8 x 1.093
90	10862P2	Decal, Air Cleaner Instructions
91	11078P1	Grip, Hand Lever
92	11297P1	Knob, Shift Lever
93	10670P1	Knob, Control
94	19087A1	Shield, Weldment
95	180079	Bolt, Hex 5/16-18 x 1
96	120214	Washer, Lock 5/16 Sp
97	10866P1	Nut, Conduit 1 In. Pipe
98	144138	Elbow, Pipe 1 In. 45 Deg
99	19347P1	Pipe, Exhaust

WIRING DIAGRAM

816



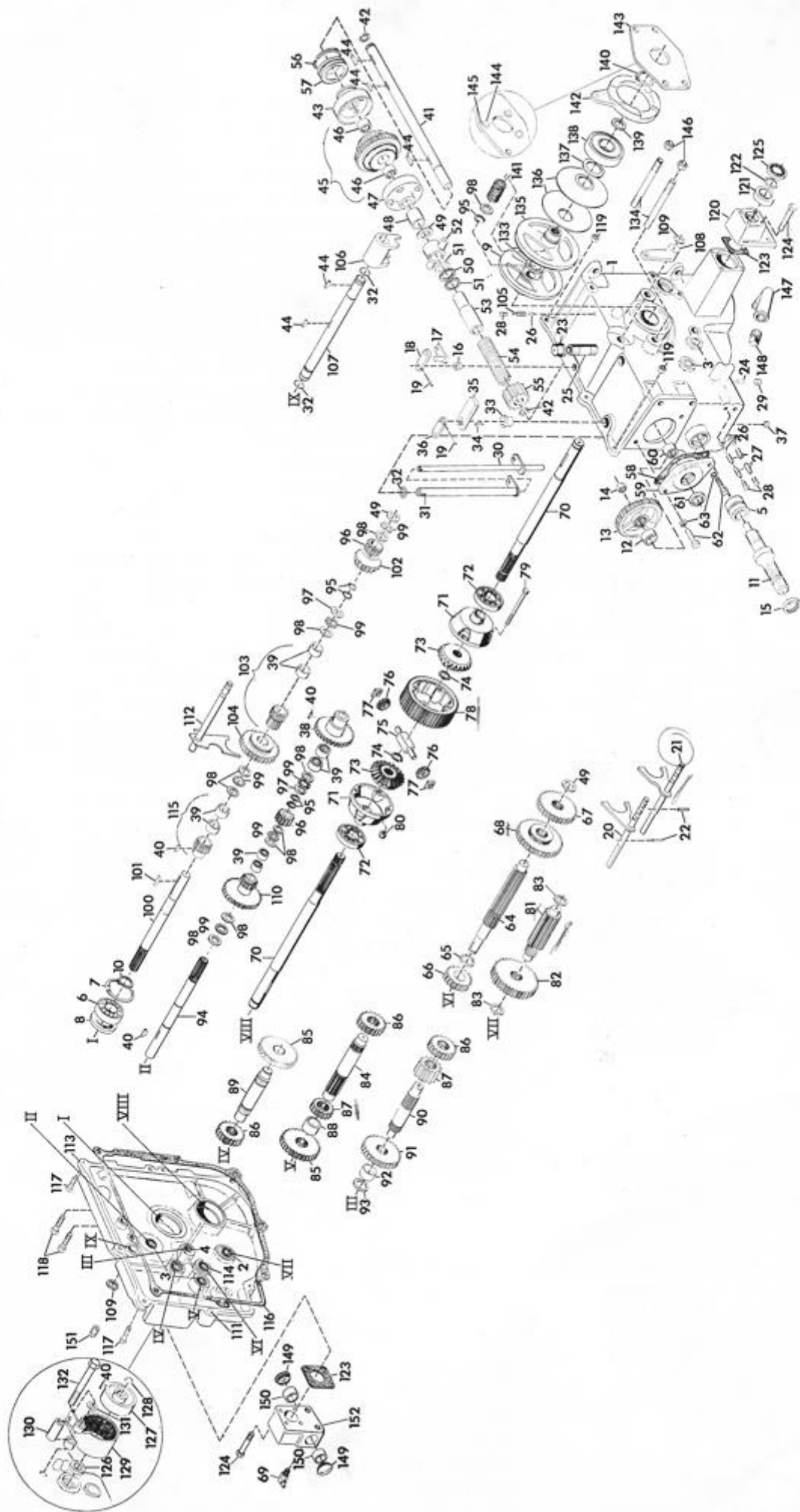




<u>ITEM NO.</u>	<u>PART NO.</u>	<u>DESCRIPTION</u>
1	19690P1	Bracket, Control Cable
2	20651A1	Frame, Main Weldment
3	18652P1	Axle, Steering
4	9411027	Lube Fitting, 1/4-28
5	9411031	Lube Fitting, 1/4-28 45 Deg. Elbow
6	18785P1	Cap, Front Axle
7	18463A1	Pin, King Weldment
8	18461P1	Arm, Tie Rod
9	9418692	Nut, Lock 5/8-11 Washer Insert Hex
10	19864P1	Tube, Axle Pivot
11	271781	Bolt, Hex 3/4-10 x 4-1/2
12	456007	Nut, Lock 3/4-10 Washer Insert Hex
13	10969P1	Casting, Grille
14	180079	Bolt, Hex 5/16-18 x 1
15	9419455	Nut, Lock 5/16-18 Washer Insert Hex
16	20500A1	Shaft, Cross Weldment
17	180175	Bolt, Hex 1/2-13 x 1-1/4
18	18358A1	Support, Fender Weldment
19	11307P1	Spring, Comp. Type 1-41/64 x .97 x 117 Rate
20	5741P1	Cap, Valve Spring
21	11308P1	Pin, Spring Mounting
22	454666	Pin, Spring 1/8 x 1/2
23	180126	Bolt, Hex 3/8-16 x 1-1/2
24	456004	Nut, Lock 3/8-16 Washer Insert Hex
25	18361P1	Strap, Frame Extension
26	18362P1	Bracket, Fender Hold Up
27	180124	Bolt, Hex 3/8-16 x 1-1/4
28	20453A1	Drawbar Weldment
29	180173	Bolt, Hex 1/2-13 x 1
30	180177	Bolt, Hex 1/2-13 x 1-1/2
31	435507	Nut, Lock 1/2-13 Washer Insert Hex
32	180179	Bolt, Hex 1/2-13 x 1-3/4
33	19260P1	Bushing, Pivot Casting
34	120396	Washer, Flat 17/32 x 1-1/16 x .095
35	18820P1	Strap, Rear Hitch
36	20502A1	Hitch, Rear Weldment 816
37	451519	Nut, Jam 3/8-16 Hex Heavy
38	14718P1	Bolt, Special 3/8-16 x 3 Hex Hd
39	19172P1	Strap, Locking
40	10405P1	Pin, Hair Cotter
41	18052P1	Hub, Wheel
42	187184	Key, Woodruff 1/4 x 2-1/8 Soft No. 127
43	18055P1	E-Ring No. X5133-118 Truarc
44	20660P1	Bracket, Switch
45	180021	Bolt, Hex 1/4-20 x 7/8
46	20916P1	Switch, Interlock
47	107354	Nut, Stamped 9/16-18 7/8 Hex x .20
48	14882P1	Casting, Steering Box
49	17822P1	Screw, 3/8-16 Soc. Hd. Shoulder Sp.
50	124829	Nut, Jam 3/8-16 Hex

<u>ITEM NO.</u>	<u>PART NO.</u>	<u>DESCRIPTION</u>
51	19083P1	Gear, Helix
52	19447P1	Column, Steering
53	13627P1	Nut, Lock Esna 3/8-24 Light Thin
54	18697P1	Spacer, .760 x 1.060 x .105
55	11270P1	Ring, Retaining
56	14889P1	Gear, Spur
57	120396	Washer, Flat 17/32 x 1-1/16 x .095
58	14891A1	Sector Weldment
59	18699A1	Plate, Steering Weldment
60	18700P1	Cover, Steering Plate
61	180082	Bolt, Hex 5/16-18 x 1-3/8
62	106751	Key, Woodruff 3/16 x 3/4 Soft No. 9
63	14890P1	Pitman Steering
64	102896	Screw, Set 3/8-16 x 1 Sq. Hd.
65	180081	Bolt, Hex 5/16-18 x 1-1/4
66	11130P1	Rod, Tie Assembly
67	180077	Bolt, Hex 5/16-18 x 3/4
68	120393	Washer, Flat 11/32 x 11/16 x .065
69	18416P1	Strap-Fender Hold-Up
70	18420P1	Pin, Clevis 1/4 x .406
71	11860P1	Pin, Hair Cotter
72	18573P1	Tray, Battery
73	180018	Bolt, Hex 1/4-20 x 5/8
74	9419454	Nut, Lock 1/4-20 Washer Insert Hex
75	19092P1	Rod, Lift
76	15691P1	Pin, Hair Cotter
77	19091P1	Yoke, Adjustable
78	138086	Pin, Clevis 1/2 x 1.213
79	18449P1	Cap
80	12744P1	Bolt, Hub 7/16-20 x 3/4 (Special)
81	11654P1	Cover, Foot Board
82	11653P1	Cover, Foot Board
83	14949P1	Pad
84	18866A1	Hitch, Rear Weldment
85	18864P1	Pin, Hitch
86	11768P1	Tip, Rubber
87	20889P1	Cable, Battery
88	15823P1	Bolt, Special 5/16-18 x 12
89	11334A1	Reflector, Lamp Assembly
90	6913P1	Terminal, Sta-Kon (RB44)
91	454646	Lamp No. 1073
92	11030P1	Clip, Light Mtg.
93	120385	Washer, Flat 3/16 x 9/16 x .049
94	159947	Screw, Mach 10-24 x 3/4 Pan Hd
95	11286P1	Clip, Wire
96	11289P1	Panel, Front Light
97	7331P1	Clip, Speed
98	159920	Screw, Mach 10-24 x 1/2 Pan Hd
99	11763P1	Nut, Wire
100	19521P1	Line, Fuel L.H.
101	20890P1	Hose, Fuel 11 In.
102	10896P1	Line
103	7216P1	Clamp, Fuel Hose
104	10629P1	Tie, Cable

<u>ITEM NO.</u>	<u>PART NO.</u>	<u>DESCRIPTION</u>
105	10977A1	Cowl Instrument Panel Weldment
106	12011P1	Decal, Instrument Panel
107	120388	Washer, Flat 7/16 x 1 x .083
108	11337P1	Switch, Light
109	18587P1	Nut, Special Culver Sterns No. 14173
110	14511P1	Lamp, Indicator Assembly
111	20751P1	Bulb, Oil Lamp
112	18207P1	Switch, Ignition
113	18585P1	Nut, 5/8-32 Hex Jam Indak 83033
114	18586P1	Washer, 5/8 Int Tooth Lock Indak No. 85019
115	18570P1	Key, Ignition Switch Indak
116	11332A1	Lighter, Cigar
117	17124A1	Holder, 30 Amp Fuse Assembly
118	14893P1	Fuse, 30 Amp Acc. 30
119	20749P1	Harness, Wiring
120	11773P1	Knob and Lever Assembly
121	11772P1	Washer, Friction
122	11774P1	Washer, Spring
123	181566	Bolt, Hex 1/4-28 x 3/4
124	9411621	Nut, Lock 1/4-28 Plug Insert Hex
125	19689P1	Conduit Assembly
126	15752P1	Control
127	10174P2	Bushing
128	20273P1	Ring, Retaining
129	11777P1	Grommet, Plastic
130	180020	Bolt, Hex 1/4-20 x 3/4
131	120392	Washer, Flat 9/32 x 5/8 x .065
132	18522P1	Bracket
133	120375	Nut, Hex 1/4-20
134	6980P1	Cable, Ground
135	7274E1	Battery, 12V
136	12386P1	Hook, Battery
137	11027P1	Bracket, Battery Hold Down
138	10413P1	Nut, Wing 1/4-20 Washer Insert
139	20955P1	Plate, Control Cover Hydraulic
140	167257	Screw, Tapping 1/4-20 x 1/2 Pan Hd
141	14897P1	Moulding
142	12383P1	Tank, Fuel
143	18563P1	Fuel Valve 90 Deg Reverse Flow
144	11057P1	Insert, Mesh Grille
145	15707A1	Hood Assembly
146	18197P1	Plug, Bumper
147	19135P1	Decal, Hood L.H.
NS	19136P1	Decal, Hood R.H.
148	160515	Screw, Mach 1/4-20 x 1/2 Pan Hd
149	11989P1	Decal, Electrical System Warning
150	7289P1	Cap, Gas Tank
151	11138P1	Bushing, Rear Fender
152	19086A1	Fender, Rear Weldment
153	120394	Washer, Flat 13/32 x 13/16 x .065
154	181637	Bolt, Hex 3/8-24 x 1
155	17837P1	Reflector, Red Safety
156	11352P1	Bumper, Stem
157	19341P1	Seat
158	131016	Washer, Flat 21/32 x 1-5/16 x .095
159	126485	Bolt, 1/2-13 x 1-1/4 Rd Hd Sq Nk
160	20499P1	Pin, Clevis 5/8 x 1.125
161	19448P1	Wheel, Steering
162	11190P1	Tire, Front 16 x 5:50-5
163	11191P1	Valve Stem Assembly
164	18442A1	Wheel, Asm Front 400-800 Model Tractor
165	18445P1	Bearing, Cup LM 11910
166	18447P1	Seal
167	18446P1	Bearing, Cone LM11949
168	11194P1	Tire, Rear 23 x 8:50-12
169	11191P1	Valve Stem Assembly
170	11195P1	Rim Weldment
171	11705A1	Wheel Assembly Rear 400-800 Model Tractor
172	18448P1	Spacer
NS	18702A1	Cover, Steering Plate Weldment



<u>ITEM NO.</u>	<u>PART NO.</u>	<u>DESCRIPTION</u>
1	17910A1	Case, Transmission Assembly
2	17912P1	Bearing, Needle 1 x 1-1/4 x 3/4
3	17913P1	Bearing, Needle 3/4 x 1 x 3/4
4	17914P1	Bearing, Needle 5/8 x 13/16 x 3/4
5	14640A1	Bearing Assembly 1.0000 x 1.9800 x 1.2430
6	17915P1	Bearing, Ball 1.968 x 3.149 x .629
7	18872P1	Ring, Retaining N-5000-315
8	17917P1	Seal, Oil
9	18024P1	Hub, Clutch
10	17919P1	Ring, Retaining 5100-196
11	19538P1	Shaft, PTO
12	17924P1	Spacer, 1.060 x 1.250 x .450
13	17922P1	Gear, Spur PTO 10 DP 56 Teeth x .750 Std
14	9418692	Nut, Lock 5/8-11 Washer Insert Hex
15	17923P1	Seal, Oil
16	17925P1	Bushing, 2-Speed
17	17926A1	Shifter Weldment
18	17929P1	Arm, Shifter
19	9421202	Pin, Spring 3/16 x 1
20	20761A1	Fork, Rail, Shift Weldment
21	20762A1	Fork, Rail, Shift Weldment
22	456390	Pin, Spring 1/4 x 3/4
23	19472P1	Cap, Pipe 1/2 NPT
24	18200P1	Pin, Interlock
25	121664	Nipple, Pipe 1/2 x 2-1/2
26	274301	Ball, Steel 5/16
27	17936P1	Spring, Comp Type 1-1/2 x .30 x 26 Rate
28	103877	Plug, Pipe 1/8 In Sq Hd Steel
29	9421743	Plug, Cup 3/8
30	17937A1	Shifter Weldment
31	17940A1	Shifter Weldment
32	18018P1	O-Ring 5/8 x 3/4 x 1/16
33	17943P1	Bushing
34	271089	Key, Woodruff 1/8 x 3/8 Hard No. 213
35	17944P1	Arm, Shifter
36	17945P1	Arm, Shifter
37	17946P1	Plug
38	17947A1	Reverse Gear And Bearing Assembly, 3.6 DP 36 Teeth x .350
39	17949P1	Bearing, Needle 3/4 x 1 x 1/2
40	431787	Key, Woodruff 3/16 x 5/8 Hard No. 61
41	17951P1	Shaft, PTO, Clutch
42	15733P1	Ring, Retaining Eaton 321-1
43	17952P1	Cup, Clutch
44	124549	Key, Woodruff 3/16 x 3/4 Hard No. 9
45	17953A1	Cone, Clutch Bearing Assembly
46	17949P1	Bearing, Needle 3/4 x 1 x 1/2
47	17957P1	Cup, Clutch
48	17958P1	Spacer, PTO
49	14998P1	Bearing, Thrust Race Torr TRC-1220, .090 Thick
50	11225P1	Bearing, Needle Thrust, 1.002 x 1.552
51	17959P1	Bearing, Thrust Race Torr TRC-1625
52	17960A1	Shifting Collar Assembly
53	17963P1	Throw-Out PTO
54	17964P1	Spring, Comp. Type 5 x 1.50 x 200 Rate
55	17965P1	Gear, Spur PTO 10 DP 22 Teeth x 1.200 Std
56	17966P1	Ring, Retaining 1-3/8 Eaton 340
57	17967P1	Bearing, Ball 1.378 x 2.440 x .551

<u>ITEM NO.</u>	<u>PART NO.</u>	<u>DESCRIPTION</u>
58	18857P1	Gasket, Front Cap
59	18858A1	Cap, Bearing Assembly
60	9660P1	Bearing Torrington B-128 (B-128-OH)
61	17973P1	Seal, Oil
62	180079	Bolt, Hex 5/16-18 x 1
63	120214	Washer, Lock 5/16 Sp.
64	17974P1	Shaft, Sliding Gear
65	14987P1	Ring, Retaining Eaton 329-1
66	14988P1	Gear, 8 DP 16 Teeth x .850
67	14995P1	Gear, Sliding
68	14989P1	Gear, Sliding, 10 DP 36 Teeth x .594
69	9411032	1/4 Lube Fitting, 90° Elbow (816 Only)
70	19957P1	Axle, Bevel Gear Diff.
71	19956P1	Cap, Diff., End
72	17984P1	Bearing, Ball 1.378 x 2.834 x .669
73	19953P1	Gear, Bevel, 6/8 DP 22 Teeth x .800
74	17980P1	Ring, Retaining 5160-98
75	19954P1	Pin, Spider Pinion
76	19952P1	Pinion, Bevel
77	12667P1	Block, Drive
78	19955P1	Gear, Final Drive, 6.125 DP 49 Teeth x 1.5
79	20513P1	Bolt, Hex
80	20514P1	Nut, Hex
81	17986P1	Pinion, Final Drive
82	17987P1	Gear, 8 DP 30 Teeth x .750
83	19340P1	Bearing, Thrust Race Torr TRA-1625, .030 Thick
84	17989P1	Shaft, Splined
85	15115P1	Gear, 10 DP 30 Teeth x .500
86	15118P1	Gear, 10 DP 20 Teeth x .600
87	17992P1	Gear, 10 DP 16 Teeth x .750
88	17993P1	Spacer, 1.057 x 1.250 x .550
89	17995P1	Shaft, Splined
90	17997P1	Shaft, Splined
91	19535P1	Gear, 10 DP 36 Teeth x .500
92	17999P1	Spacer 1.027 x 1.125 x .457
93	18000P1	Bearing, Thrust Race Torr TRC-1018, .090 Thick
94	20448P1	Shaft, Splined Rev. Clutch
95	11135P1	Ring, Retaining 5100-75
96	18003P1	Gear, 10 DP 16 Teeth x .750 Standard
97	6742P1	Bearing, Thrust Race Torr TRB-1220, .060 Thick
98	11223P1	Bearing, Needle Thrust Race, .030 Thick
99	6741P1	Bearing Needle Thrust .752 x 1.240 x .078
100	20447P1	Shaft, Splined Fwd Clutch
101	117989	Key, Woodruff 3/16 x 1-1/4 Hard No. 19
102	18006P1	Gear, Bevel, 10 DP 25 Teeth x .9025
103	18007A1	Gear And Bearing Assembly, 10 DP 16 Teeth x 1.750
104	18011P1	Gear, Spur, 2 Speed, 10 DP 36 Teeth x .750
105	18015P1	Spring Comp Type 1-1/4 x .30
106	18016P1	Yoke, PTO
107	18017P1	Shaft, PTO Yoke
108	18019P1	Lever, PTO
109	11270P1	Ring, Retaining 5133-75
110	18020A1	Gear, Idler Assembly, (3.6 DP 36 Teeth x .350) (1.6 DP 16 Teeth x .350)
111	18089P1	Pin, Dowel 3/8 x 5/8
112	20755A1	2-Speed Shift Rail Weldment
113	18022A1	Trans. Cover Assembly
114	11063P1	Bearing, Needle 3/4 x 1 x 3/4

<u>ITEM NO.</u>	<u>PART NO.</u>	<u>DESCRIPTION</u>
115	18025A1	Gear And Bearing Assembly
116	18027P1	Gasket, Trans. Cover
117	180125	Bolt, Hex 3/8-16 x 1-3/8
118	180132	Bolt, Hex 3/8-16 x 2-1/4
119	456004	Nut, Lock 3/8-16
120	18810P1	Retainer, Axle Brg. L.H.
121	18029P1	Bearing, Ball 1.250 x 2.250 x .500
122	18812P1	Ring, Retaining N-5000-225
123	18030P1	Gasket
124	180191	Bolt, Hex 1/2-13 x 3-1/4
125	18031P1	Seal, Oil Axle
126	15137P1	Seal, Oil
127	15143P1	Drum, Brake
128	18053P1	E-Ring 5133-62 Truarc
129	18162A1	Band, Brake Assembly
130	18165P1	Bushing .530 x .750 x 2.06
131	120396	Washer, Flat 17/32 x 1-1/16 x .095
132	180188	Bolt, Hex 1/2-13 x 2-3/4
133	18035P1	Seal, Oil (Clutch) C/R 7631
134	18036P1	Stud
135	20449A1	Clutch Disc Assembly
136	18041P1	Spring, Belleville
137	18548P1	Shim (.030) Fwd-Rev Clutch
138	18042P1	Bearing, Ball 1.574 x 3.149 x .708
139	120386	Washer, Flat 5/16 x 47/64 x .065
140	18043P1	Ring, Retaining 5100-156
141	20444P1	Spring, Comp Type 1.0 x .80 x 36 lbs./in.
142	19063P1	Cam, Clutch
143	18047P1	Plate, Clutch
144	18166P1	Roller, Clutch
145	18167P1	Pin, Clutch
146	190171	Nut, Lock 1/2-20 Washer Insert Hex
147	108686	Elbow, 1/2 90° Street
148	103880	Plug, Pipe 1/2 In Sq Hd Steel
149	15872P1	Cap (816 Only)
150	18977P1	Bearing (816 Only)
151	103879	Plug, Pipe 3/8 In Sq Hd Steel
152	18811P1	Retainer, Axle Brg. R. H.