

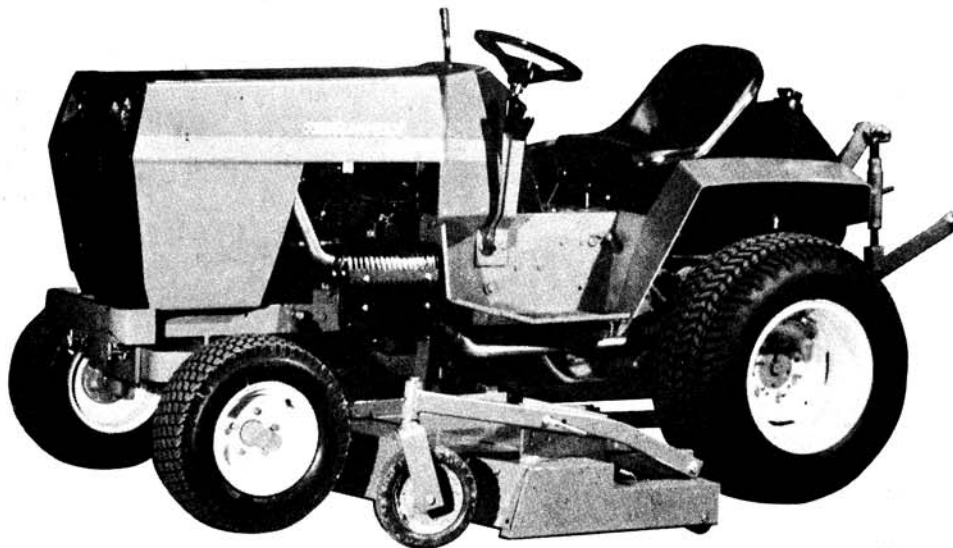
GRAVELY

A DIVISION OF CLARKE-GRAVELY CORPORATION

To continue its program of quality and design improvement, the manufacturer reserves the right to change specifications, design or prices without notice and without incurring obligation.

OWNERS MANUAL

72" ROTARY MOWER
3-BLADES
MODEL NO. 22013
FORM NO. 23153 (4-77)



GENERAL

Read this manual carefully and understand how to operate and maintain the equipment before attempting to use it. The 72" 3-blade mower has been designed and built to the traditional standards for which Gravely is famous. Knowing how to use the tractor and mower is the largest part of getting the job done.

This manual includes parts lists, set-up, safety, operator and maintenance instructions. All references to right, left, front, rear are made from operator's position on the seat. Item Numbers used herein are in reference to the Illustrated Parts List. Contact the Gravely Dealer for further information.

To continue its program of quality and design improvement, the manufacturer reserves the right to change specifications, design or prices without notice and without incurring obligation.

SPECIFICATIONS

General purpose

Lawn care
Weed mowing

Maintenance Intervals

See recommended maintenance

Lubricants

All grease fittings: general purpose grease
Gear box: 90# EP GL5 gear oil
Locking collar: light oil

Cutting width: 72" (1829 mm)

Cutting height: 1" to 5½"
(25.4 to 139.7 mm)

Shipping weight

498 lbs. (224.10 kg)

TRAINING

1. Read the tractor Operator's Manual and mower manual carefully. Be thoroughly familiar with the equipment. Know how to stop the unit and disengage the controls quickly.
2. Never allow children to operate the equipment. Never allow adults to operate equipment without proper instructions.
3. Keep area of operation clear of all persons, especially small children and pets. Never direct the mower discharge toward bystanders or allow anyone in front of the unit.
4. Exercise caution, especially when operating in reverse.
5. Do not operate equipment except from proper operator's position.
6. Keep safety devices and shields in place at all times.
7. Do not allow passengers to accompany the operator at any time.
8. Disengage PTO before crossing a gravel drive, walks or roads. Stay alert for hidden hazards and traffic.

PREPARATION

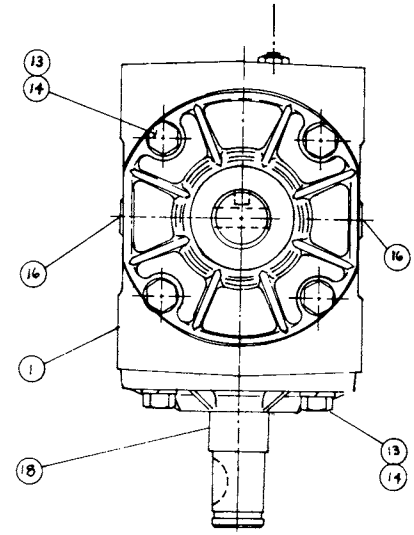
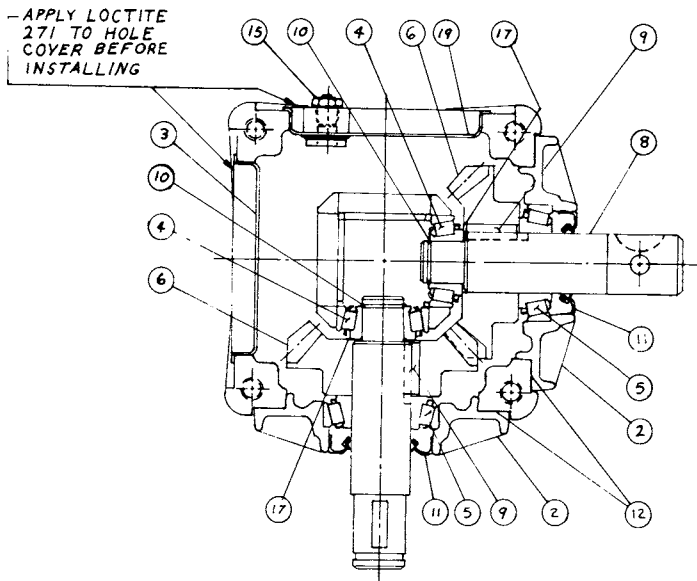
1. Thoroughly inspect the work area where the equipment is to be used and remove all stones, glass, metal, bones, sticks, wires and any other foreign objects. Stay alert for holes and other hidden hazards.
2. Disengage all clutches before starting engine.
3. Never make an adjustment to mower while engine is running.
4. Do not put hands or feet near or under rotating parts.
5. Do not wear loose fitting clothing or accessories that might get caught in moving parts or on the controls. Keep hands, feet, hair, clothing, etc., away from moving parts. Wear eye protection.
6. Before leaving the operator's position, STOP the engine and put the PTO in the OUT position and set parking brake.
9. Reduce speed on slopes and in sharp turns to prevent tipping over or loss of control. Exercise extreme caution when changing direction on slopes.
10. Do not start or stop suddenly when going up or down slopes. When mowing, go up and down the face of slopes, never across.
11. Never direct the discharge so as to endanger life or property such as people, pets, structures, cars, etc.
12. Take all possible precautions when parking or leaving the tractor unattended: STOP the engine, set parking brake and lower attachment.
13. Before cleaning, repairing, or inspecting, make certain all moving parts have stopped. Set parking brake and remove the key to prevent accidental starting.

OPERATION

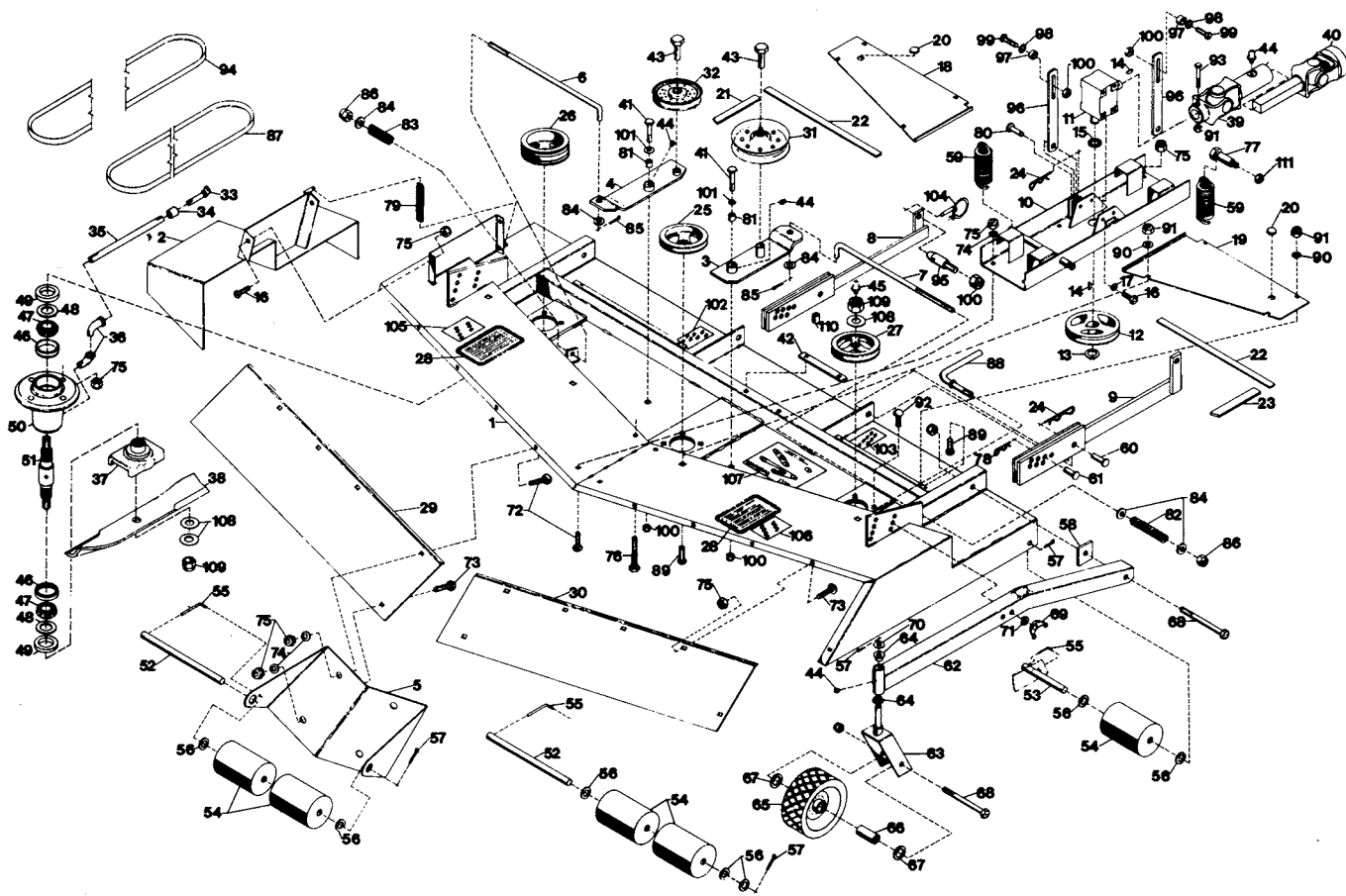
1. Never operate the mower without good visibility and light.
2. Before making any repairs or adjustments, STOP the engine, put the PTO in the OUT position and set parking brake.
3. After striking a foreign object, STOP the engine and put the PTO in the OUT position and set parking brake before inspecting for damage. Any damage must be repaired before restarting the equipment.
14. If the mower should start to vibrate abnormally, stop the engine, disengage the PTO, set parking brake. Abnormal vibration is generally a warning of trouble. Obtain qualified service assistance.
15. Do not run engine indoors, except when starting engine and for transporting equipment in or out of building. Open outside doors as exhaust fumes are dangerous.
16. Never operate machine at high transport speeds on slippery surfaces.
17. Disengage the tractor PTO when transporting or not in use.
18. Do not overload mower capacity by attempting to operate equipment at too fast a rate.

MAINTENANCE AND STORAGE

1. Keep all bolts, nuts and screws tight to be sure equipment is in safe working condition.
2. Do not touch the muffler or exhaust pipes until they have had sufficient time to cool.
3. Prevent accidental starting by removing the ignition key and set parking brake when servicing the mower.



<u>ITEM NO.</u>	<u>PART NO.</u>	<u>DESCRIPTION</u>
1	22532	Housing, Gearbox 72" Mower
2	22533	Bearing, Cap
3	22534	Cover, Hole
4	22535	Bearing Set
5	9245& 9246	Bearing Set
6	22536	Gear
8	22537	Shaft, Input
9	22538	Key, SQ.
10	22539	Ring, Snap
11	22540	Seal
12	22541	Shim Pack
13	180079	Bolt, Hex; 5/16-18 x 1.0
14	120214	Washer, Lock; 1/2 SP
15	455322	Relief Fitting; 1/8 NPT
16	103879	Plug, Pressure; 3/8-18 NPT Soc. Hd.
17	22542	Shim, Gear
18	22543	Shaft, Gear; (Output)
19	22544	Plug, Hole



ITEM NO.	PART NO.	DESCRIPTION	ITEM NO.	PART NO.	DESCRIPTION
1.	22014	Deck, 72" Mower, Weldment	56.	131016	Washer, Flat; 21/32 x 1-5/16 x .095
2.	22102	Chute, Discharge Weldment	57.	137204	Pin, Cotter; 1/8 x 1-1/2
3.	22056	Weldment, L.H. Idler Plate	58.	22101	Spacer; 2.00 Sq. x .50
4.	22052	Weldment, R.H. Idler Plate	59.	22082	Spring, Lift
5.	22051	Bracket, Roller Mount	60.	22112	Pin, Clevis; 3/4 x 1-31/32
6.	22055	Rod, R.H. Idler	61.	22113	Pin, Clevis; 3/8 x 1-31/32
7.	22060	Rod, L.H. Idler	62.	22092	Caster Wheel Support
8.	22107	Hinge Support, Weldment R.H.	63.	22095	Fork, Caster Wheel Weldment
9.	22108	Hinge Support, Weldment L.H.	64.	22098	Bearing, Flanged
10.	22071	Gear Case, Weldment	65.	22099	Wheel, Gauge
11.	22078	Gearbox, 72" Mower	66.	22100	Bushing, Axle
12.	22079	Pulley, Drive	67.	131000	Washer, Flat; 13/16 x 2 x .148
13.	22080	Ring, Retaining	68.	433163	Bolt, Hex; 1/2-13 x 5
14.	124551	Key, Woodruff; 1/4 x 7/8 Hard	69.	137156	Nut, Wing; 1/2-13
15.	22077	Washer, Felt	70.	19340	Bearing, Thrust Race
16.	180122	Bolt, Hex; 3/8-16 x 1	71.	120384	Washer, Lock 1/2 SP
17.	120382	Washer, Lock; 3/8 SP	72.	126390	Bolt, 3/8-16 x 7/8 RD HD SQ NK
18.	22088	Cover, Belt, R.H.	73.	126227	Bolt, 3/8-16 x 3/4 RD HD SQ NK
19.	22086	Cover, Belt, L.H.	74.	120388	Washer, Flat; 7/16 x 1 x .083
20.	22091	Plug, Button	75.	456004	Nut, Lock; 3/8-16 Washer Insert
21.	22089	Strip, Sealing, Belt Cover (L.H.)	76.	189305	Bolt, Hex; 3/8-16 x 3 1/2
22.	22090	Strip, Sealing, Belt Cover	77.	11279	Pin, Latch
23.	22249	Strip, Sealing, Belt Cover (R.H.)	78.	11860	Pin, Hair Cotter
24.	10405	Cotter, Hair Pin	79.	15172	Spring, Ext. Type; 4-1/2 x .50 x 22 Rate
25.	22042	Pulley, Center Spindle	80.	20499	Pin, Clevis; 5/8 x 1.125
26.	22043	Pulley, R.H. Spindle	81.	22062	Spacer; .516 x .875 x 1.000
27.	22044	Pulley, L.H. Spindle	82.	22066	Spring, Idler Comp. Type 2.85
28.	18549	Decal, Danger	83.	22067	Spring, Idler Comp. Type 2.50
29.	22050	Shield, 72" Front R.H.	84.	120394	Washer, Flat; 13/32 x 13/16 x .065
30.	22049	Shield, 72" Front L.H.	85.	121224	Pin, Cotter; 3/32 x 1
31.	22063	Pulley, Flat Idler	86.	192481	Nut, Lock; 3/8-24 Washer Insert
32.	22064	Pulley, V-Idler	87.	22068	V-Belt HB x 69.28
33.	21214	Fitting, Grease 90° (Center Spindle Only)	88.	22395	Bolt, Adjustment
34.	144067	Coupling, (Center Spindle Only)	89.	126216	Bolt; 5/16-18 x 3/4 RD HD SQ NK
35.	22045	Nipple, Pipe; 1/8-27 x 14.60 (Center Spindle Only)	90.	446363	Washer, Flat; 3/8 x 7/8 x .083
36.	144117	Elbow, Street; 1/8-27 (Center Spindle Only)	91.	419455	Nut, Lock; 5/16-18 Washer Insert
37.	20066	Cradle, Blade	92.	126411	Bolt, 3/8-16 x 1 1/4 RD HD SQ NK
38.	22041	Blade, 72" Mower	93.	180087	Bolt, Hex; 5/16-18 x 2
39.	22083	U-Joint Assembly, Female	94.	22069	V-Belt HB x 152.5
40.	22084	U-Joint Assembly, Male	95.	21706	Pin, Link
41.	22061	Bolt, Special Hex; 1/2-13 x 2	96.	21778	Strap
42.	22081	Plate, Space	97.	21779	Bushing
43.	22065	Bolt, Special Hex; 1/2-13 x 1	98.	120390	Washer, Flat; 9/16 x 1 3/8 x .109
44.	14406	Fitting, Lube	99.	180177	Bolt, Hex; 1/2-13 x 1 1/2
45.	411010	Fitting, Lube 1/8	100.	435507	Nut, Lock; 1/2-13 Washer Insert
46.	9245	Cup, Roller Bearing	101.	120396	Washer, Flat; .500 x 1.062 x .095
47.	9246	Cone, Roller Bearing	102.	22402	Decal, Rear R.H. 72" Mower
48.	20743	Washer	103.	22403	Decal, Rear L.H. 72" Mower
49.	21211	Seal, Steel	104.	21898	Pin, Klik
50.	21215	Housing, Bearing, (Side Spindle)	105.	22401	Decal, Front R.H. 72" Mower
	21218	Housing, Bearing Mower (Center Spindle)	106.	22400	Decal, Front L.H. 72" Mower
51.	22040	Shaft, Spindle	107.	22399	Decal, Belt Diagram 72" Mower
52.	22047	Shaft, Center Roller	108.	22545	Bellville Springs
53.	22046	Shaft, Roller	109.	272739	Nut, Lock; 5/8-18 Washer Insert
54.	15351	Roller, Gage	110.	444855	Plug, Drain; 1/8-27 Pipe
55.	11123	Pivot, Pin Lock	111.	120378	Nut, Hex; 1/2-13

ASSEMBLY

1. Cut banding straps securing hardware and mower components. See fig 3.

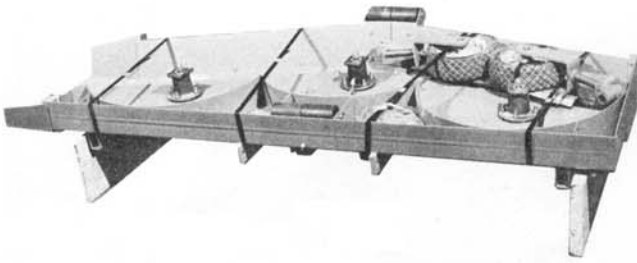


fig 3

2. Remove nuts and bellville springs from spindles.
3. Set blades (item 38) on each spindle making sure blades fit down in cradle (item 37). The lift portion of the blade points towards mower deck.
4. Put two bellville springs (item 108) on each spindle. Assemble bellville springs so both cups face blade. Secure with nut and torque 80-90 ft. lbs. (108.48 to 122.04 Nm). Wedge a piece of wood between blades and deck housing to keep blades from turning. See fig 4.

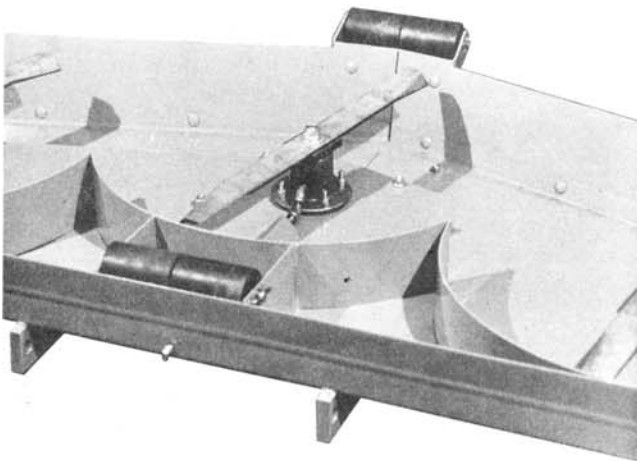


fig 4

5. Install the gage roller (item 54) using roller shaft, (item 53) washers, (item 56) and secure with pin lock (item 55) and cotter pin (item 57). Install a roller assembly in each rear corner. See fig 5.

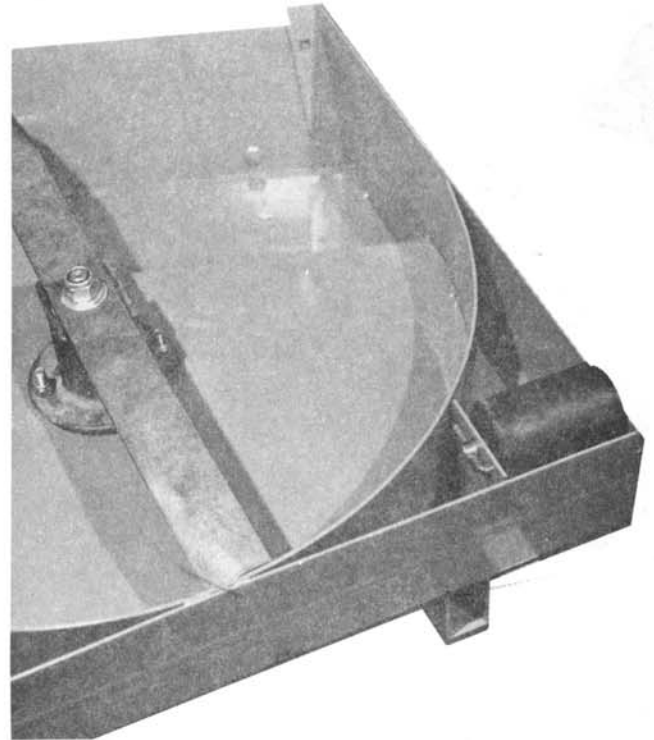


fig 5

6. Turn mower deck right side up using caution not to damage the mower or cause personal injury.
7. Remove the shipping blocks. The hardware removed will be used in the installation of the caster wheel supports. **DO NOT DISCARD HARDWARE.** See fig 6.

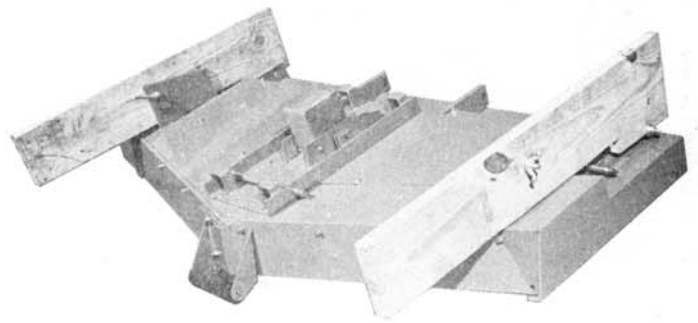


fig 6

8. Install the caster wheel support (item 62) using the hardware removed. Fasten only the back of support at this time using bolt, (item 68) spacer (item 58) and nut (item 100). See fig 7.

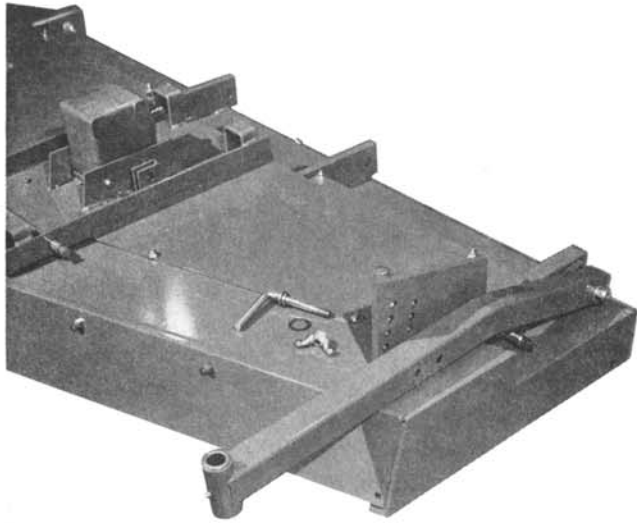


fig 7

9. Install the caster wheel assembly on the support and secure with washer (item 70) and cotter pin (item 57). See fig 8.

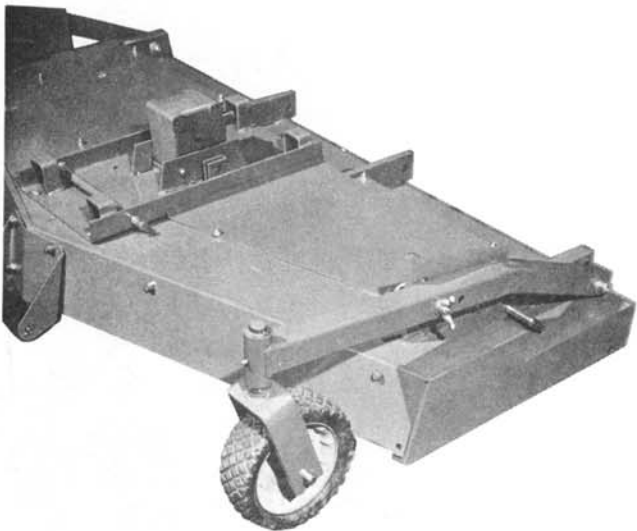


fig 8

10. Fasten front of support with adjustment bolt, (item 88) lock washer (item 71) and wing nut (item 69). See fig 8.

11. Install hinge support weldment (item 8 or 9) and fasten with clevis pin (item 60) and hair pin cotter (item 24). There is a right and left weldment. The hanging strap at the back of the weldment goes to the outside. Install only one weldment before installing mower on tractor. See fig 9.

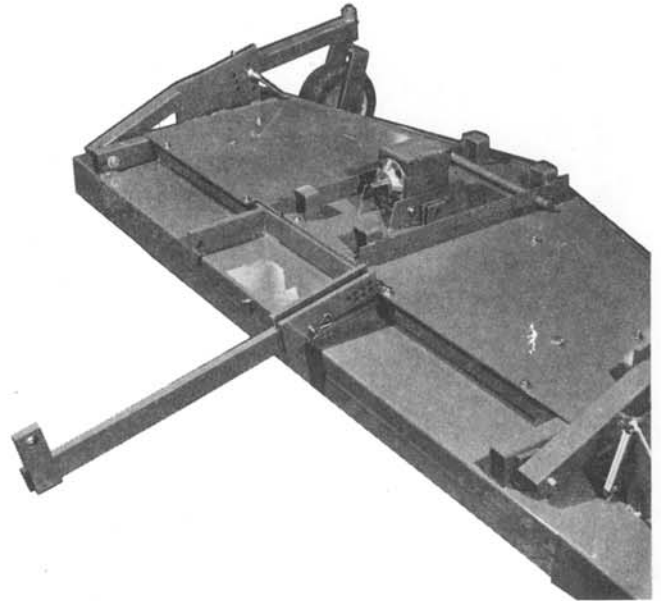


fig 9

12. Insert the woodruff key (item 14) in the slot of the drive shaft of the gearbox (item 11). See fig 10.

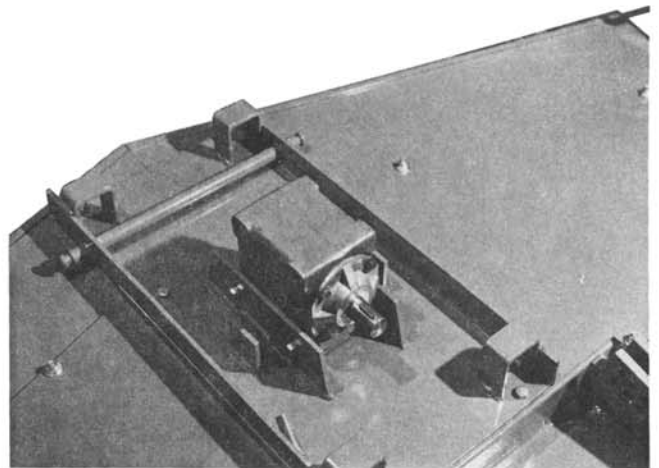


fig 10

13. Align the keyway of the female U-joint assembly (item 39) and slide joint on shaft. Secure U-joint to shaft with bolt (item 93) and nut (item 91). See fig 11.

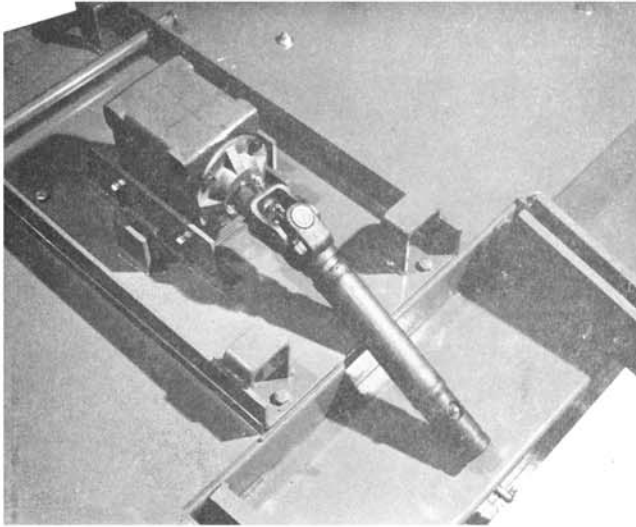


fig 11

14. Remove the plugs (item 16-fig 2) from each side of gearbox. Add SAE 90# EP GL-5 gear oil to one hole until it appears in other hole. Replace plugs. Check oil level periodically.

ATTENTION: Gearbox is shipped without oil.

15. Install the hydraulic lift straps (item 96) on the tractor using bolt (item 99), flat washer (item 98), bushing (item 97) and lock nut (item 100). Straps go on outside of hydraulic lift. See fig 12.

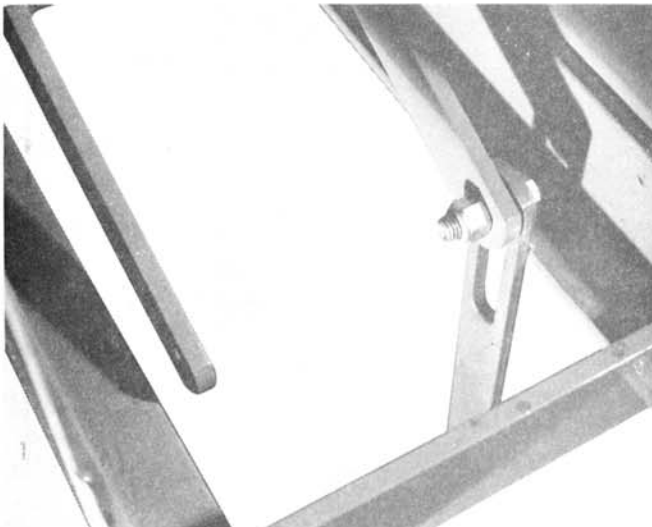


fig 12

16. Install latch pin (item 77) and secure with nut (item 111). See fig 14.

INSTALLATION

PREPARATION

To position mower under tractor for connection, first place mower on a level surface. Locate tractor behind mower with front of tractor towards rear of mower. The mower deck is designed to support the front wheels of the tractor.

CAUTION: CASTER WHEELS MUST BE ADJUSTED TO THE LOWEST CUTTING POSITION OR DAMAGE WILL RESULT. BELT COVERS MUST BE IN PLACE AND SECURE.

Block behind mower to start wheels of tractor up and onto the mower deck, like a ramp. Make sure back wheels will not stop on the ramp once front wheels have cleared mower deck.

The tractor transmission should be in First Gear/ Low Range. Start engine and carefully drive front of tractor over mower. Remove the blocking ramp.

CONNECTION

1. Lower hydraulic lift to the lowest position. See tractor Operator's Manual.
2. Secure lift straps to mower with clevis pin (item 80) and hair pin cotter (item 24). See fig 13.

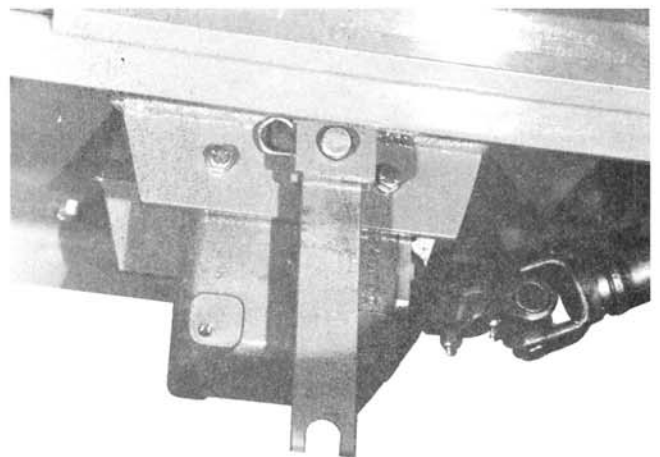


fig 13

3. Start engine and raise mower to highest position using the hydraulic lift.
4. Attach springs (item 59) to the mower and latch pins on each side of mower/tractor. See fig 14.

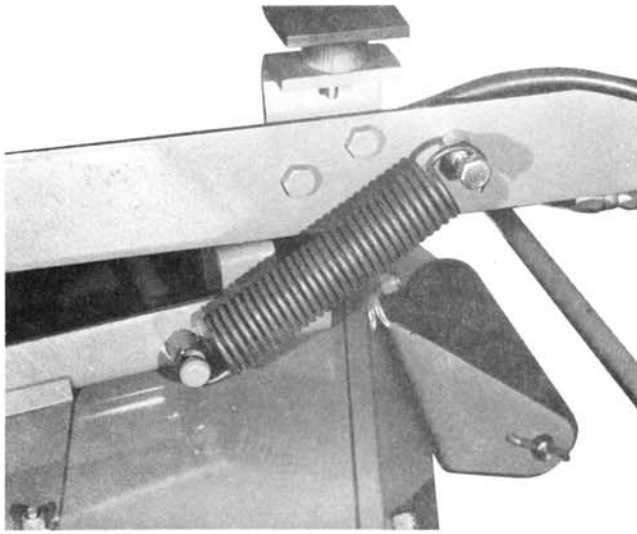


fig 14

5. Slide the hinge support weldment, that was installed during set-up over the link pin in back of tractor and secure with kirk pin (item 104). See fig 15.

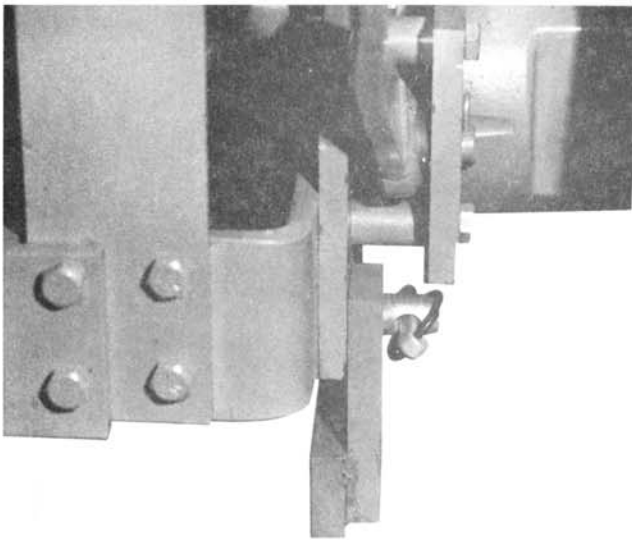


fig 15

6. Slide the remaining hinge support weldment over the remaining link pin on other side and secure with kirk pin. Secure forward part of weldment to mower deck as described in set-up.

7. Lower mower all the way down. Apply a light coat of general purpose grease to splined PTO shaft of tractor.
8. Slide collar ring towards U-joint and hold. Slide collar on shaft, release ring and continue sliding on shaft until collar "clicks" and locks in position.

CUTTING HEIGHT ADJUSTMENT

The cutting height of mower can be adjusted from 1" to 5½". There are 7 height adjustments.

1. Raise mower to highest position with the hydraulic lift.
2. Set caster wheel supports to the desired cutting height by locating the adjustment bolt in the desired hole of the adjusting flange on the mower deck. See fig 16.

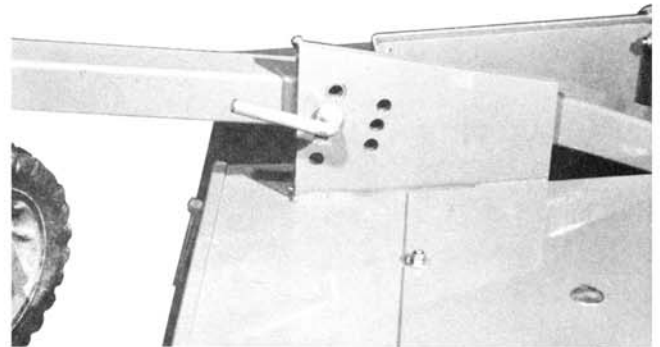


fig 16

3. Locate the corresponding hole in the hinge support and insert the clevis pin (item 61) and secure with hair pin cotter (item 78). See fig 17.

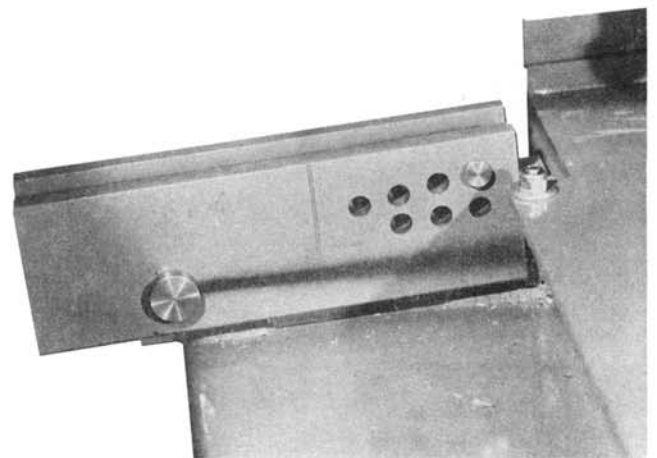


fig 17

For correct cutting height adjustment, holes in caster wheel supports and hinge supports must correspond. Refer to decals attached to mower or diagrams in this manual. Fig 18 & 19.

LOWER THE NUMBER - LOWER THE CUTTING HEIGHT.

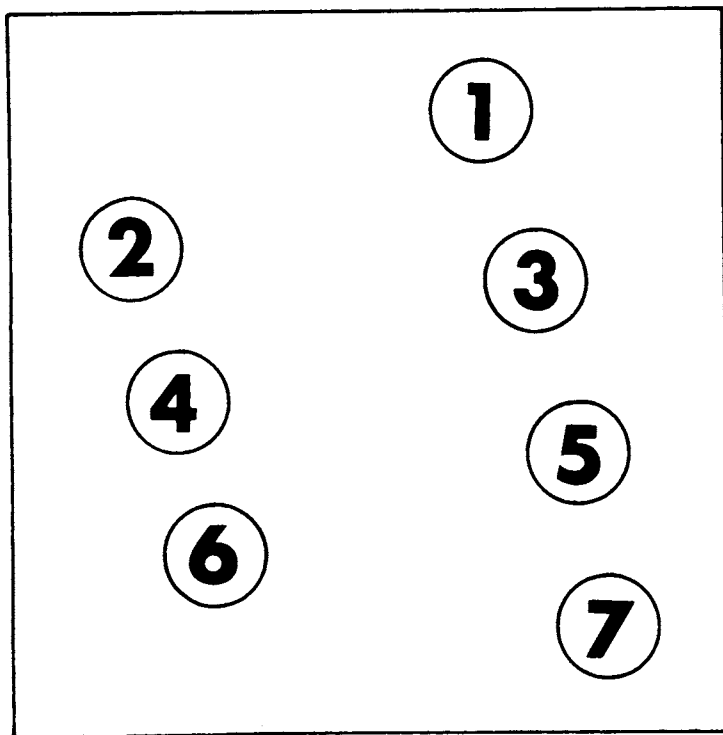


fig 18

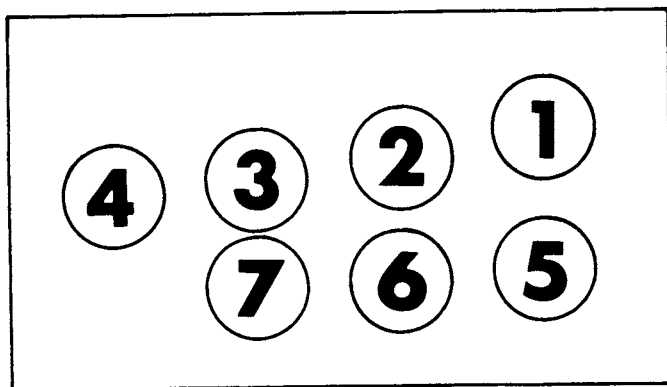


fig 19

LUBRICATION

There are 11 grease fittings on the mower. See Factory Recommended Preventive Maintenance.

Spindle bearing housings — 3
Idler pivot arms — 2
Caster wheel supports — 2
Caster wheels — 2
U-joint — 2

NOTE: Before lubricating, wipe fittings clean so as not to force dirt into grease fittings.

Blade Spindle Bearings:

The two end blade bearings are lubricated through the top of the mower deck. Remove the button plugs (item 20) to expose the fittings. The center spindle bearing fitting is lubricated at the lower back of the mower deck. When bearing housing is full, excess grease will come out the end of the housing.

Idler Pivot Arms:

For access to the idler pivot arms, remove the belt cover (items 18 & 19). Add grease through the fittings until it comes out around the stud.

Caster Wheel Supports:

The caster wheel forks are lubricated through the fitting located in the end of the caster wheel support. Add grease until it comes out around the bushings.

Caster Wheels:

The caster wheels are lubricated through the grease fittings on the wheel hubs. Add grease until it comes out around the bushings.

U-joint:

There are two grease fittings on the female end of the drive assembly. Add grease to the U-joint until it comes out around the rectangular shaft.

BELT

BELT TENSION

The "long" belt tension adjustment is located on the left side of mower. Adjust by tightening the nut against the spring leaving a .005" to .010" air gap between coils of spring.

To adjust tension on "short" belt, remove right belt cover (item 18) and follow procedure as described for "long" belt".

BELT REPLACEMENT

1. Remove mower from tractor and remove right and left hand belt cover.
2. Loosen belt tension on "long" belt.
3. Remove gear case weldment.
4. Remove and replace "long" belt.

NOTE: If required, "short" belt must be replaced before installing "long" belt.

5. Loosen "short" belt tension and remove belt.
6. Replace "short" belt and adjust tension as described in BELT TENSION.
7. Place the "long" belt around the pulleys and idler as shown in fig 20 or diagram on mower.

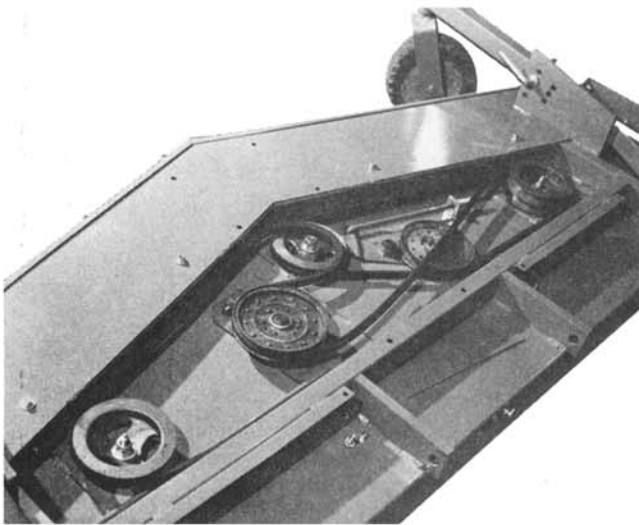


fig 20

8. Place gear case weldment on mower and replace bolts and nuts that secure the back. Do not tighten.
9. Lift gear case weldment as far as bolt will allow and place belt around drive pulley shown in fig 21.

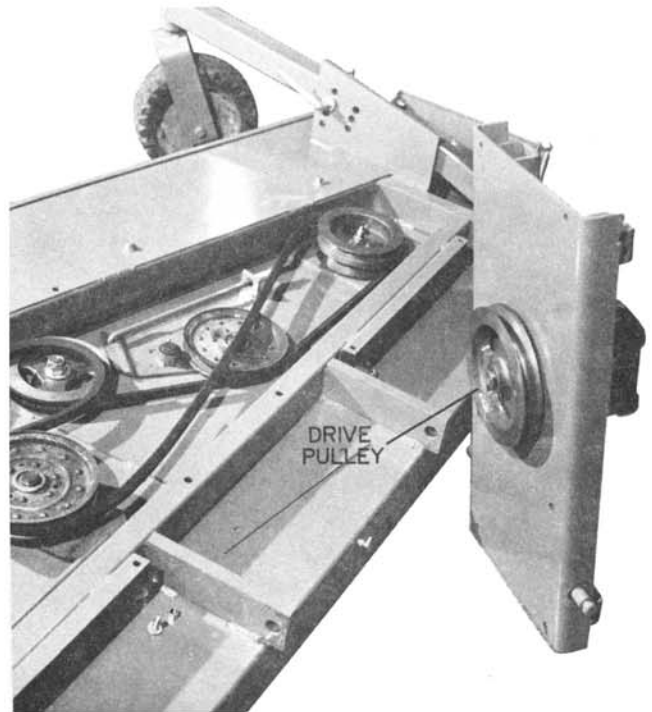


fig 21

10. Replace all bolts, washers, nuts and tighten.
11. Adjust "long" belt tension as described in BELT TENSION.
12. Replace belt covers, all bolts, nuts, washers and tighten.

BLADES

The mower must be removed from the tractor before removing the blades. **DO NO ATTEMPT TO REMOVE THE BLADES WHILE MOWER IS ATTACHED TO TRACTOR.**

After removal from tractor, position mower in such a way that blades can be removed safely. If mower is turned upside down the pressure relief valve plunger must be secured to prevent gearbox from losing oil. Use tape or similar material across valve.

CAUTION: Mower deck must be supported so mower does not rest on the gearbox. Damage will result.

Resharpener and balance the blades when they become dull. When blades are removed for sharpening, inspect for surface cracks. Discard any blade that has evidence of metal fatigue and/or cracks. Pay particular attention to the metal around the center hole.

Check gearbox oil level before remounting on tractor.

OPERATION

1. Read the Tractor Operator's Manual. Follow safety and operating instructions to engage and disengage the PTO (power take-off).
2. After PTO is engaged, run engine at full throttle.
3. Select a ground speed fast enough to get the job done, yet slow enough to give a clean cut. Some trials may be necessary to find an optimum ground speed (for a particular stand of grass) to give a satisfactory cut.
4. In thick, lush growth reduce ground speed, not engine speed, (see Tractor Operator's Manual) to allow the mower enough (more) time to cut and discharge. Come to a complete stop before shifting Gear and/or Range.
5. **NORMAL MOWING:** Plan a mowing pattern so as to avoid discharging onto grass that has not been cut. Mowing grass with cuttings on top of it decreases the efficiency of the mower and is only necessary when mulching is desired. Keep the engine at full throttle.

MULCHING: Plan a mowing pattern so as to discharge cutting on grass that has yet to be mowed. The mower will then mow cut and uncut grass at the same time discharging a fine mulch. Slower ground speed is necessary for mulching than for normal mowing. Keep the engine at full throttle.

REMOVAL

1. Raise mower to the highest lift position.
2. Set caster wheel supports to the lowest cutting position. **CASTER WHEELS MUST BE IN THE LOWEST CUTTING POSITION OR DAMAGE WILL RESULT WHEN REMOVING FROM TRACTOR.**
3. Remove klik pins securing hinge support weldments at back of tractor.
4. Remove the hair pin cotter and clevis pin securing one of the hinge support weldment to mower deck and remove weldment. It is not necessary to disconnect both weldments from mower.
5. Remove remaining hinge support weldment from link pin at back of tractor.
6. Remove lift springs.
7. Lower mower to the lowest lift position and remove the hair pin cotters and clevis pins securing lift straps to mower deck.
8. Remove U-joint from PTO shaft of tractor.
9. Block between tractor wheels and mower to start front wheels of tractor up and onto mower deck as described in installation.
10. Back the front wheels of tractor over mower. **DO NOT DRIVE THE BACK WHEELS OF TRACTOR OVER MOWER.**

STORAGE

1. After removing mower from the tractor, reconnect hinge support and all clevis pins to mower for storage.
2. Clear mower of all cuttings and debris.
3. Perform all lubrications.
4. Apply a light coat of oil to preserve finish and appearance.

**FACTORY RECOMMENDED
PREVENTIVE MAINTENANCE**

Operating
Hours

Spindle Nut Lubrication	-----	8
Caster Wheel Lubrication	-----	8
Idler Pivot Arm Lubrication	-----	50
Check Gearbox Oil	-----	50
Check Blade Sharpness	-----	50
Torque Spindle Nut	-----	50
Check Belt Wear and Tension	-----	50
Check all Nuts and Bolts	-----	Daily

LIMITED WARRANTY

This Limited Warranty is issued by Clarke-Gravely Corporation, Gravely Division, and consists of the following terms:

1. Only the original purchaser of new Gravely equipment is covered by this Warranty.
2. This Warranty covers repair or replacement of parts manufactured by Gravely which are defective in material or workmanship. Gravely will pay for parts and labor only.
3. The Warranty starts the date of purchase and lasts for NINETY (90) DAYS for products used in commercial applications, and TWELVE (12) MONTHS for products used by the owner to maintain his personal residence. Commercial means any use other than to maintain the grounds around the personal residence of the owner of the product.
4. Some components of Gravely equipment are not covered by the Gravely Warranty. These components are covered by the original manufacturer's warranty, they are:
 - (a) Engines - Onan and Briggs & Stratton
 - (b) Tires - Goodyear, Goodrich & Carlisle
 - (c) 34" Mower Gear Box - Peerless
5. To obtain warranty service on Gravely equipment including components not manufactured by Gravely, use this procedure:
 - (a) Notify the Gravely dealer from whom you purchased the equipment.
 - (b) If you have moved and it is not convenient to notify the selling dealer, notify the nearest Gravely dealer. You should supply this dealer with a copy of the bill of sale as proof of the date of purchase.
 - (c) Make arrangements to have the equipment delivered to the dealer (refer to paragraph 6 (a) below).
 - (d) If you have any questions concerning the Gravely Warranty, they should be referred to:

Gravely Division
Clarke-Gravely Corporation
One Gravely Lane
Clemmons, North Carolina 27012
Attn: Manager of Customer Services
 - (e) Warranty service on Gravely equipment must be performed by an authorized Gravely dealer or Gravely factory branch.

6. This Warranty does not cover the following:
 - (a) Transportation between owner's home or place of business and the dealership. If the dealer provides the transportation of the equipment, he will charge the owner his usual rate for such service.
 - (b) Normal maintenance services and normal replacement of items such as spark plugs, belts, oil, oil filters, air filters, and mower blades.
7. GRAVELY MAKES NO OTHER EXPRESS WARRANTIES. ANY IMPLIED WARRANTIES, INCLUDING WARRANTIES AS TO MERCHANTABILITY OR FITNESS FOR A PARTICULAR PURPOSE, ARE LIMITED IN DURATION TO THE PERIOD SET OUT IN PARAGRAPH 3 ABOVE. SOME STATES DO NOT ALLOW LIMITATIONS ON HOW LONG AN IMPLIED WARRANTY LASTS, SO THE ABOVE STATEMENT MAY NOT APPLY TO YOU.
8. GRAVELY SHALL HAVE NO RESPONSIBILITY FOR INCIDENTAL OR CONSEQUENTIAL DAMAGES RESULTING FROM THE BREACH OF ANY WARRANTY, INCLUDING, BUT NOT LIMITED TO, INCONVENIENCE, RENTAL OR PURCHASE OF REPLACEMENT EQUIPMENT, LOSS OF PROFITS OR COMMERCIAL LOSS. SOME STATES DO NOT ALLOW THE EXCLUSION OR LIMITATION OF INCIDENTAL OR CONSEQUENTIAL DAMAGES, SO THE ABOVE LIMITATION OR EXCLUSION MAY NOT APPLY TO YOU.
9. This Warranty gives you specific legal rights, and you may have other rights which vary from state to state.
10. A Gravely equipment registration card is supplied with each Gravely tractor or major attachment. Please complete the card and return it to Gravely at the address listed on the card. The equipment registration card will be used by Gravely for:
 - (a) Recording date of purchase.
 - (b) Notification of owners in compliance with the Consumer Product Safety Act, should any notification be necessary.The return of registration card is not required in order to take advantage of this Warranty.
11. This Warranty is not subject to change or modification by anyone, including Gravely dealers and no Gravely dealer is authorized to make any representations or promises on Gravely's behalf.



One Gravely Lane
Clemmons, N. C. 27012