



▲ SAFETY MESSAGE ▲

The product for which you have requested information or replacement parts is not a current product. The replacement models incorporate product designs, safety features, safety instructions or warnings which represent the latest "State Of The Art" developments. For your safety and those around you please contact your nearest Ariens/Gravely Dealer for a demonstration of the current product safety provisions and features.

**60" CENTER MOUNT MOWER
FOR
PROFESSIONAL 24-G TRACTORS
OPERATOR'S MANUAL**

NOTE

Read this manual carefully and learn to operate and service your 60" Center Mount Mower before using it.

To keep the warranty, the 60" Center Mount Mower must be maintained and operated as directed in this manual.

All references to "left-side", "right-side", "front" and "back" are given from the operator's position.

Use the serial numbers to ensure prompt and correct service when ordering parts, requesting service or making inquiries.

SERIAL NUMBER: _____



Look for this symbol to point out important safety precautions. It means -- ATTENTION! BECOME ALERT! YOUR SAFETY IS INVOLVED.

CONTENTS

1. INSTRUCTIONS FOR SAFE OPERATION
2. OPERATING INSTRUCTIONS
3. SERVICE INSTRUCTIONS
4. STORAGE
5. PROBLEM SOLVING
6. ILLUSTRATED PARTS AND PARTS LISTS
7. SPECIFICATIONS
8. SET-UP INSTRUCTIONS
9. WARRANTY

SECTION 1

INSTRUCTIONS FOR SAFE OPERATION

Improper use of this equipment can injure people and damage the equipment. People using or servicing this equipment must read and follow the instructions in this manual.

It is important to understand that this manual and any other Gravely instruction manuals do not cover every possible danger. It is impossible for Gravely to know all possible dangers in operating and servicing the equipment.

The purchaser must give these instructions to the people operating and maintaining this equipment. These people must use eye and foot protection.

1.1 Preparation:

1. Read this manual and the tractor manual carefully.
2. Learn the location and function of all controls.
3. Learn how to use the controls to stop the wheels and mower quickly.
4. Use caution with gasoline. Gasoline is very flammable. Keep it in a clean and tight container away from flames or hot items. Never put gasoline in the fuel tank while the engine is running or hot. Clean up spilled gasoline before starting engine.
5. Be certain that all shield, guards, and interlock switches are in the correct positions.
6. Never permit children to operate the tractor and mower.
7. Inspect the area to be mowed and remove all material which could be thrown by the mower.
8. Before starting the engine, put the PTO control lever in the "OFF" position and the gear shift lever in the neutral "N" position.
9. When hauling the equipment, connect the chassis to the transporting vehicle. Never connect from control levers, rods, or like items that could be damaged.
10. Replace all parts that become damaged or lost.


1.2 Operation:

1. Wear foot and eye protection. Do not wear loose clothing.
2. Do not use the equipment in the dark without adequate lighting.

3. Keep the equipment in good condition. Maintain it as directed in this manual.
4. USE ONLY GRAVELY ACCESSORIES AND ATTACHMENTS.
5. Do not overspeed the engine. Do not override the governor.
6. Keep away from moving parts.
7. Keep people and animals away from the operating area.
8. Do not let people other than the operator near the operating equipment.
9. Use a slow speed and engage the direction control slowly when operating on slopes.
10. Look for and keep away from hazards.
11. After hitting an object, stop the equipment and engine. Check for damage. Repair any damage before operating.
12. Look behind when operating in reverse. Look for people and hazards.
13. Operate only from the operator's position.
14. Travel up and down slopes, not across.
15. If there is a sudden change in the sound or vibration of the equipment, stop the engine and check for damage. Repair any damage or failure before continuing operation.
16. Never run the engine indoors except to move it outside. Exhaust fumes are dangerous.
17. Go slowly on slick surfaces.
18. Follow traffic laws when operating on or near a road.
19. Before making adjustments or servicing, move the PTO to "OFF", turn the ignition switch to "OFF" and wait until all moving parts completely stop.
20. Before leaving the operator's position, put the PTO lever in the "OFF" position and turn the ignition key to the "OFF" position. Lock the brake lock. Wait until all moving parts have stopped.

SECTION 2

OPERATING INSTRUCTIONS

 **CAUTION:** The 60" mower is recommended for use on a Professional 24-G tractor. Mow only with the hydraulic control in the float position.

- 2.1 Transport the equipment to the area to be mowed.
- 2.2 Inspect the area to be mowed and remove all material which could be thrown by the mower.
- 2.3 Plan the pattern for cutting the grass. Generally an area is mowed around the periphery towards the center by discharging the grass toward the center on the first pass. The remainder of the mowing is done discharging the grass outward in the area which has been cut.
- 2.4 See Section 7 for the schedule of heights of cut. Set the mower for the height of cut desired.
- 2.5 See the tractor manual for correct operation of the PTO. Start the engine and put the PTO control in the "ON" position. Move the throttle control to the "FAST" position.
- 2.6 Select a slow gear. Engage the forward clutch. Control the ground speed by selecting the desired gear.

 **CAUTION:** Do not shift the transmission gears while the tractor is moving.

SECTION 3

SERVICE INSTRUCTIONS

3.1 Lubrication:

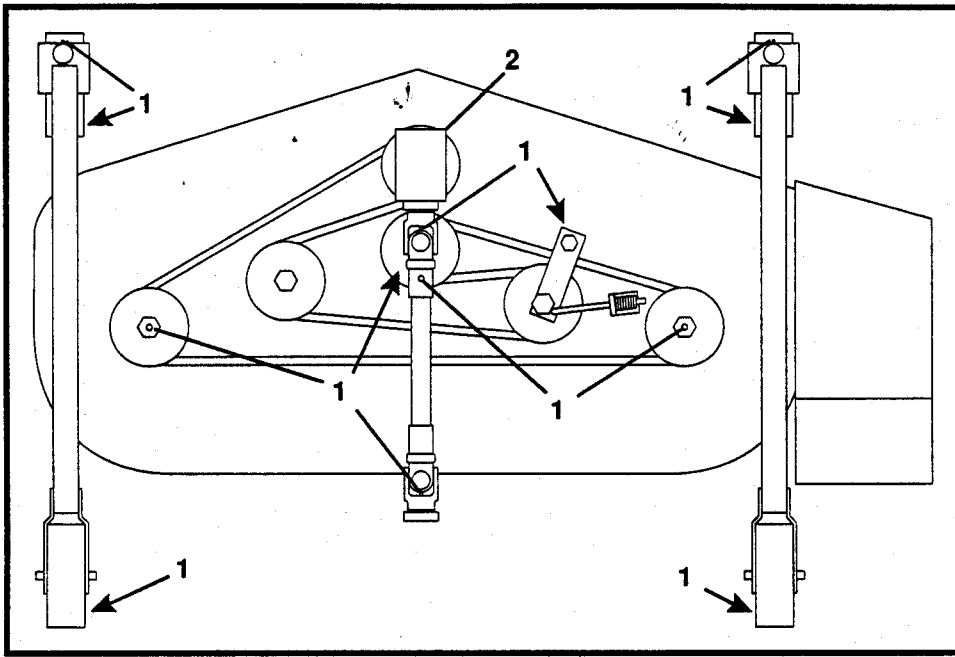
1. See Figures 1, 2 and 3. Every eight hours of operation apply multi-purpose grease to the lube fittings on:
 - a. Each spindle (3)
 - b. Each gauge wheel (4)
 - c. Drive shaft (2)
 - d. Each caster fork (2)
 - e. Each idler pivot weldment (1)
2. Gearbox: Once a year or every 200 hours of operation, check the lubricant by removing the level check plug. If oil is needed, clean the top of the gearbox, remove the fill plug and add EP 90W gear oil until it runs out of the check plug. Put the check plug and fill plug back in the holes from which they were removed.

3.2 Blade Service:

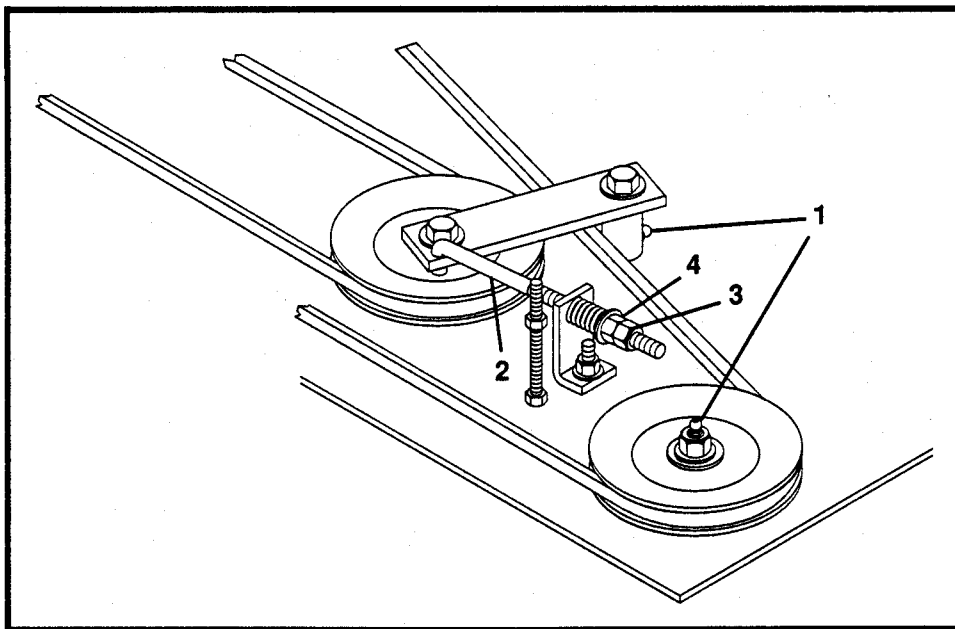
1. Every ten hours of operation or when the cut is poor visually, check blades for sharpness.
2. Remove the mower from the tractor. See Sections 3.6 and 3.7.
3. Turn the mower upside down or lift the front of the mower with a hoist or floor jack.
4. Block the blades and remove the nuts and flat washers from the spindle.
5. Sharpen and balance the blades.
6. Reverse the removal process to install the blades on the mower and the mower on the tractor.
7. Replace blades when over 1/2" has been removed or the blade cannot be balanced.

3.3 Height of Cut Adjustment:

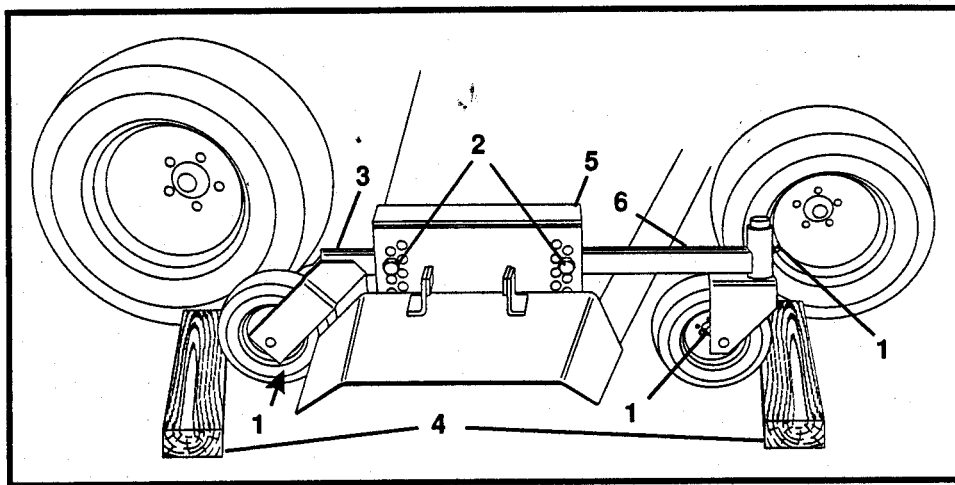
Lift the mower to the transport position. Remove the bolts in the caster support weldment. Move caster support weldment to the holes which correspond to the desired height position and reinstall the retaining bolts. See Figure 3.



1 - Lube Fitting
 2 - Gear Box
 FIGURE 1



1 - Lube Fitting 3 - Jam Nut
 2 - Idler Rod 4 - Adjusting Nut
 FIGURE 2



- | | |
|------------------------------------|---------------------|
| 1 - Lube Fitting | 4 - Blocks |
| 2 - Height Of Cut Adjustment Bolts | 5 - Hanger Assembly |
| 3 - Caster Support Weldment | 6 - Trim Line |

FIGURE 3

3.4 Belt Adjustment:

1. Remove the right side belt cover.
2. Unlock the adjusting nuts. See Figure 2.
3. Rotate the inside nut until the air gap in the spring is .010" to .015" (.25mm to .38mm).
4. Jam the adjusting nuts.
5. Install the belt cover.

3.5 Belt Replacement:

1. Remove the mower from the tractor.
2. Remove the belt covers.
3. Loosen the spring tension on the belt.
4. Remove the support plate weldment.
5. Remove the belt. (It may be necessary to move the caster support weldment.)
6. Put the new belt in position on the sheaves. See Diagram 1.

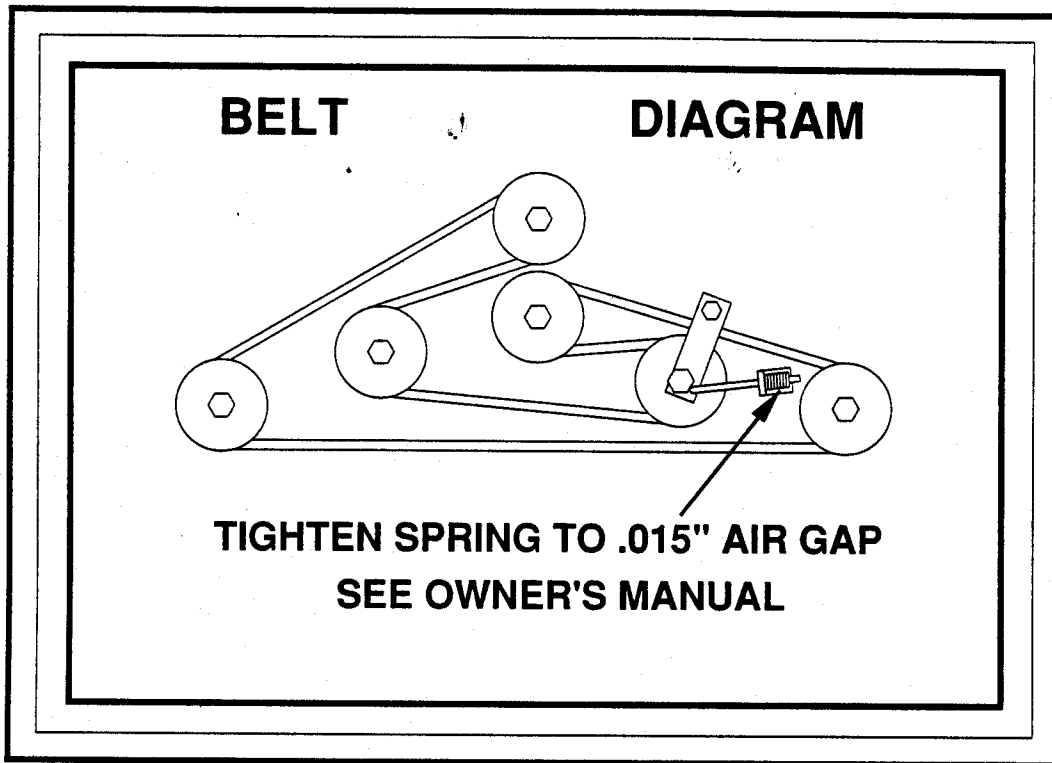


DIAGRAM 1

7. Install the support plate weldment.

NOTE: When installing the support plate weldment, make sure that the belt is around the drive pulley.

8. Adjust the belt tension. See Section 3.4.
9. Replace the belt covers.
10. Install the mower on the tractor.

3.6 Mower Installation:

1. Position the mower in front of the tractor and block to keep it from rolling.
2. Get assistance, lift and roll the front of the tractor over the mower, taking care not to damage the belt covers. See Figure 3.
3. Align the mower pivot arm weldment with the tractor latch plates. Guide the pivot arm weldment into the latch plates and latch.
4. Put the mower pivot keepers, followed by a flat washer and hairpin cotter on the shaft on each side of the mower pivot arm weldment.

5. Put the mower lift pivots on the lift rods followed by two jam nuts on each. Leave the jam nuts loose at the top of the lift rods. See Diagram 2.

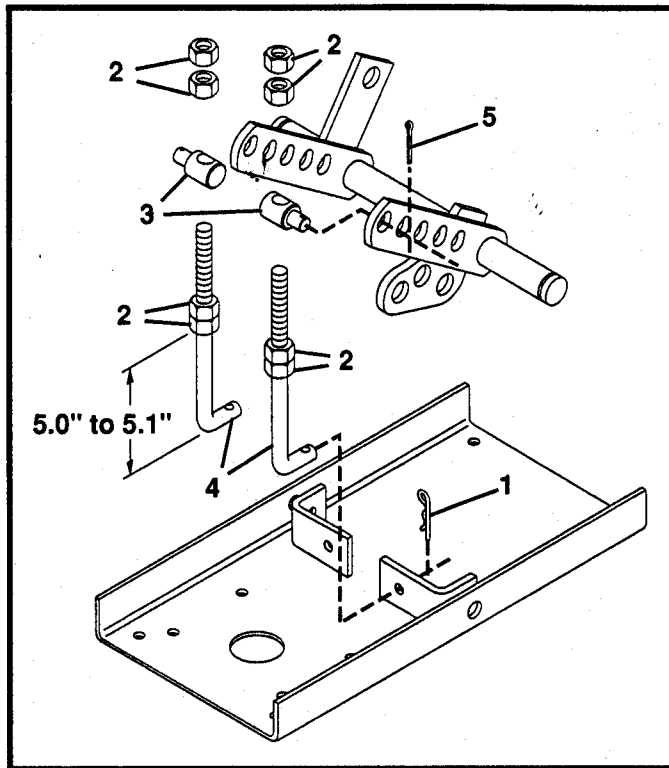
NOTE: Adjustment of the lift rod jam nuts is required only on the first installation.

6. Put a film of grease on the prop shaft and slide it into the U-joint assembly.
7. Put a film of grease on the PTO shaft.
8. Unlock the locking collar on the prop shaft assembly by pulling back. Slide the prop shaft assembly onto the PTO shaft. Release the locking collar and slide the prop shaft assembly back and forth on the PTO shaft to assure latching.
9. Put the mower in the lowest cutting position. Lower the attachment lift. Connect the lift rods to the mower and the tractor lift. See Diagram 2.
10. Move the top pair of jam nuts down on each lift rod until there is approximately 1/8 inches clearance. Jam the top pair of jam nuts on each lift rod.

NOTE: Adjustment of the lift rod jam nuts is required only on the first installation.

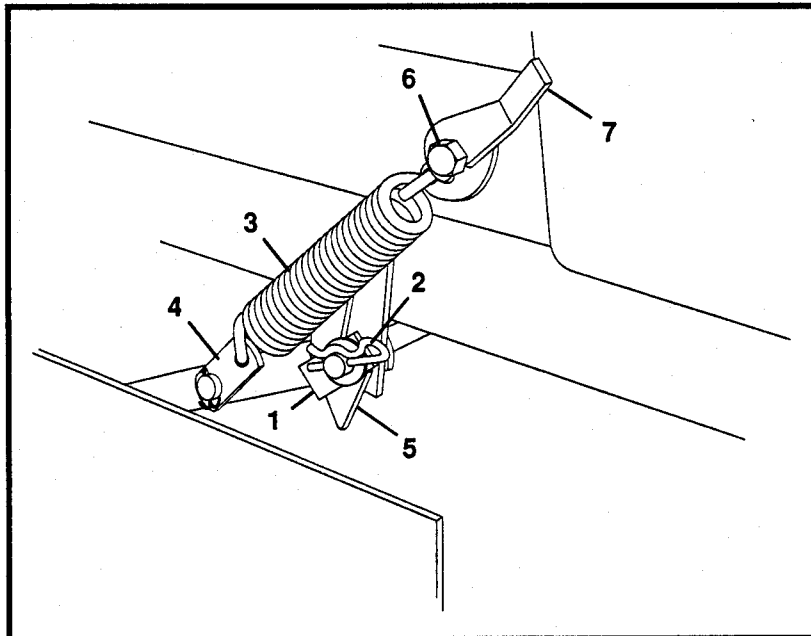
11. Lift the mower to the transport position with the attachment lift. Hook the springs to the spring tabs. Pull the latches over the latch pins and lock. See Figure 4.
12. Move the caster support to match the desired height of cut.
13. To remove the mower, reverse the installation procedure.

NOTE: If the mower is not level in the raised position, adjust by shortening the rod on the low side or lengthening the rod on the high side.



- | | |
|----------------------|----------------|
| 1 - Hair Pin Cotter | 4 - Lift Rod |
| 2 - Jam Nut | 5 - Cotter Pin |
| 3 - Mower Lift Pivot | |

DIAGRAM 2



- | | |
|------------------------|-----------------|
| 1 - Mower Pivot Keeper | 5 - Latch Plate |
| 2 - Hair Pin Cotter | 6 - Latch Pin |
| 3 - Extension Spring | 7 - Latch |
| 4 - Strap | |

FIGURE 4

SECTION 4

STORAGE

4.1 Remove the mower from the tractor and clean.

NOTE: Do not use harsh or abrasive cleaners on any painted surface. Do not allow gasoline or oil to remain on any silk screened surface.

4.2 Inspect for damage, wear, loose or missing hardware. Repair as needed.

4.3 Sharpen and balance the blades.

4.4 Lubricate.

4.5 Paint or oil any bare metal surfaces to prevent rust.

4.6 Place in a dry area.

SECTION 5

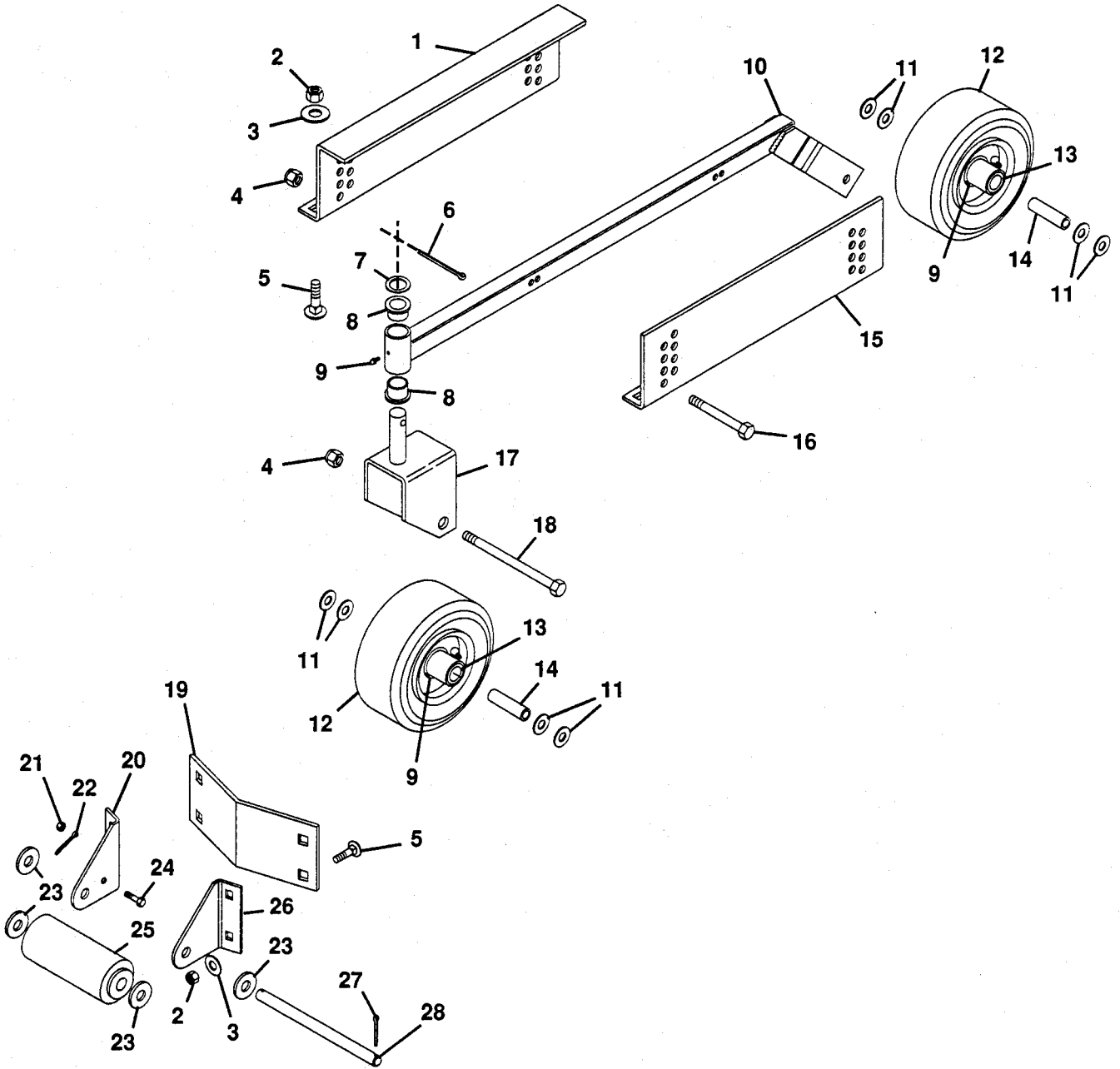
SOLVING PROBLEMS

OBSERVATION	POSSIBLE CAUSE
1. Uneven cut	Damaged deck Uneven tractor tire pressure Damaged gauge wheel or axle Damaged pivot arm weldment Bent blade
2. Uncut grass	Dull blade Damaged blade Too low engine speed Mowing tall grass Tractor ground speed too fast
3. Smoke from mower	Spindle/blade locked Debris wedged against belt Loose belt
4. Engine slows when mower is engaged	Damaged bearing in spindle assembly Damaged bearings/gears in the gear box
5. Excessive noise	Unbalanced blade(s) Damaged universal joint Damaged gear box bearings/gears Idler bearings Damaged bearings in spindle assembly

SECTION 6

ILLUSTRATED PARTS AND PARTS LISTS

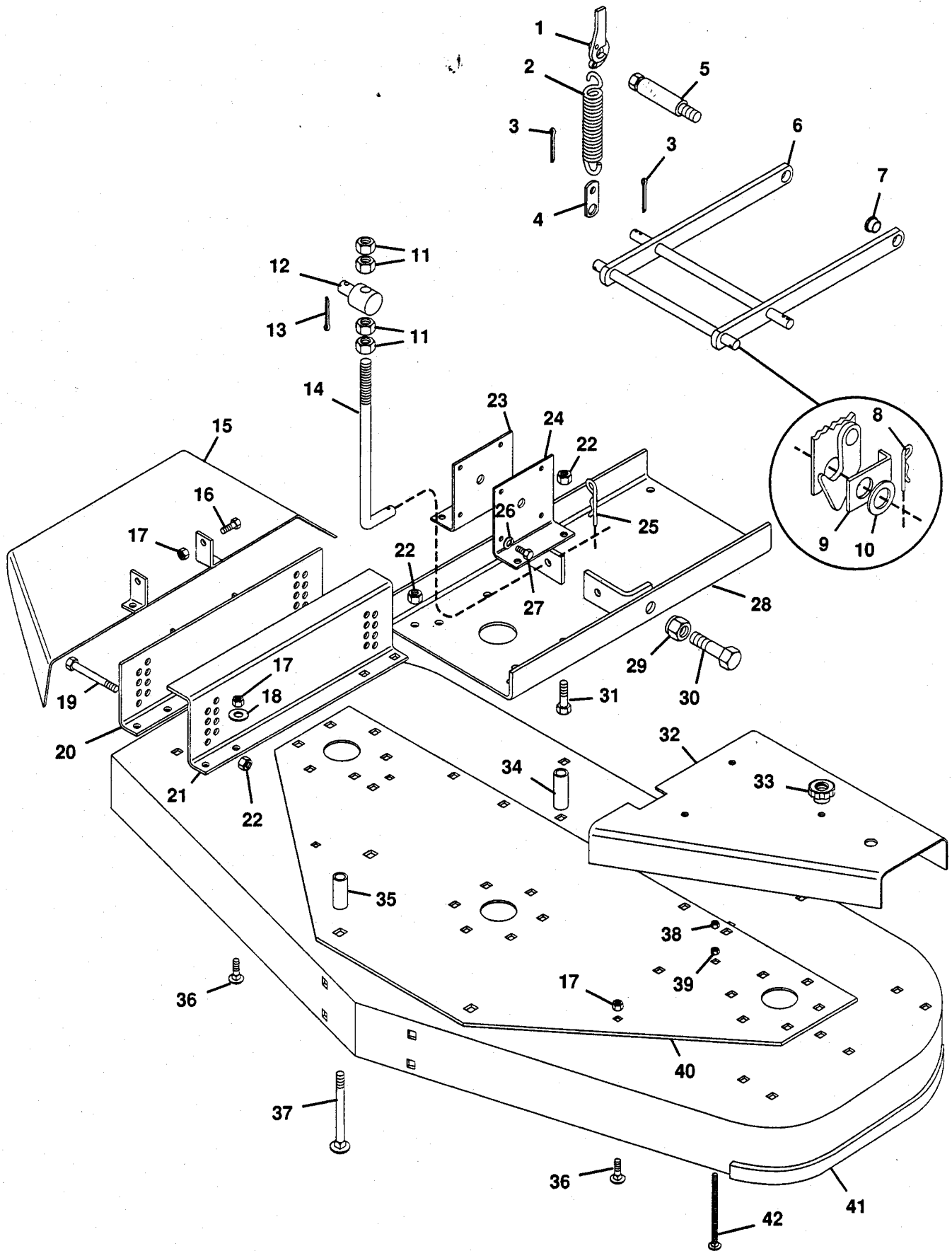
Gauge Wheels, Rollers and Height Adjustment



Gauge Wheels, Rollers and Height Adjustment

ITEM NO.	PART NO.	QTY.	DESCRIPTION	ITEM NO.	PART NO.	QTY.	DESCRIPTION
1	49996	1	Hanger, Inner	16	180192	2	Bolt, Hex 1/2-13x3.50
2	456004	10	Nut, Lock 3/8-16	17	45523	2	Weldment, Caster Fork
3	120394	10	Washer, Flat .406x.812x.065	18	445608	4	Bolt, Hex 1/2-13x5.50
4	435507	6	Nut, Lock 1/2-13	19	47006	1	Plate, Deck Reinforcement
5	120915	10	Bolt, 3/8-16x1.00 Rd Hd Sq Nk	20	44902	1	Bracket, Roller (R.H.)
6	137253	2	Pin, Cotter .187x1.625	21	419454	2	Nut, Lock 1/4-20
7	19340	2	Race, Bearing Thrust	22	103422	2	Pin, Cotter .250x2.00
8	18355	4	Bush., Flg. 1.03x1.75x.75 Ny.	23	131016	10	Washer, Flat .656x1.312x.095
9	411027	3	Fitting, Lube 1/4-28	24	180020	2	Bolt, Hex 1/4-20x.75
10	50006	2	Weldment, Caster Support	25	31390	2	Roller, Gauge
11	415543	16	Washer, Flat .531x1.250x.100	26	44903	1	Bracket, Roller (L.H.)
12	45205	4	Wheel, Gauge	27	179128	2	Pin, Cotter .25x1.00
13	37823	2	Bearing, Gauge Wheel	28	24795	2	Shaft, Center Roller
14	11950	4	Bush., St. .506x.748x3.34 Stl.	NS	33927	1	Decal, Danger Foot
15	49997	1	Hanger, Outer				

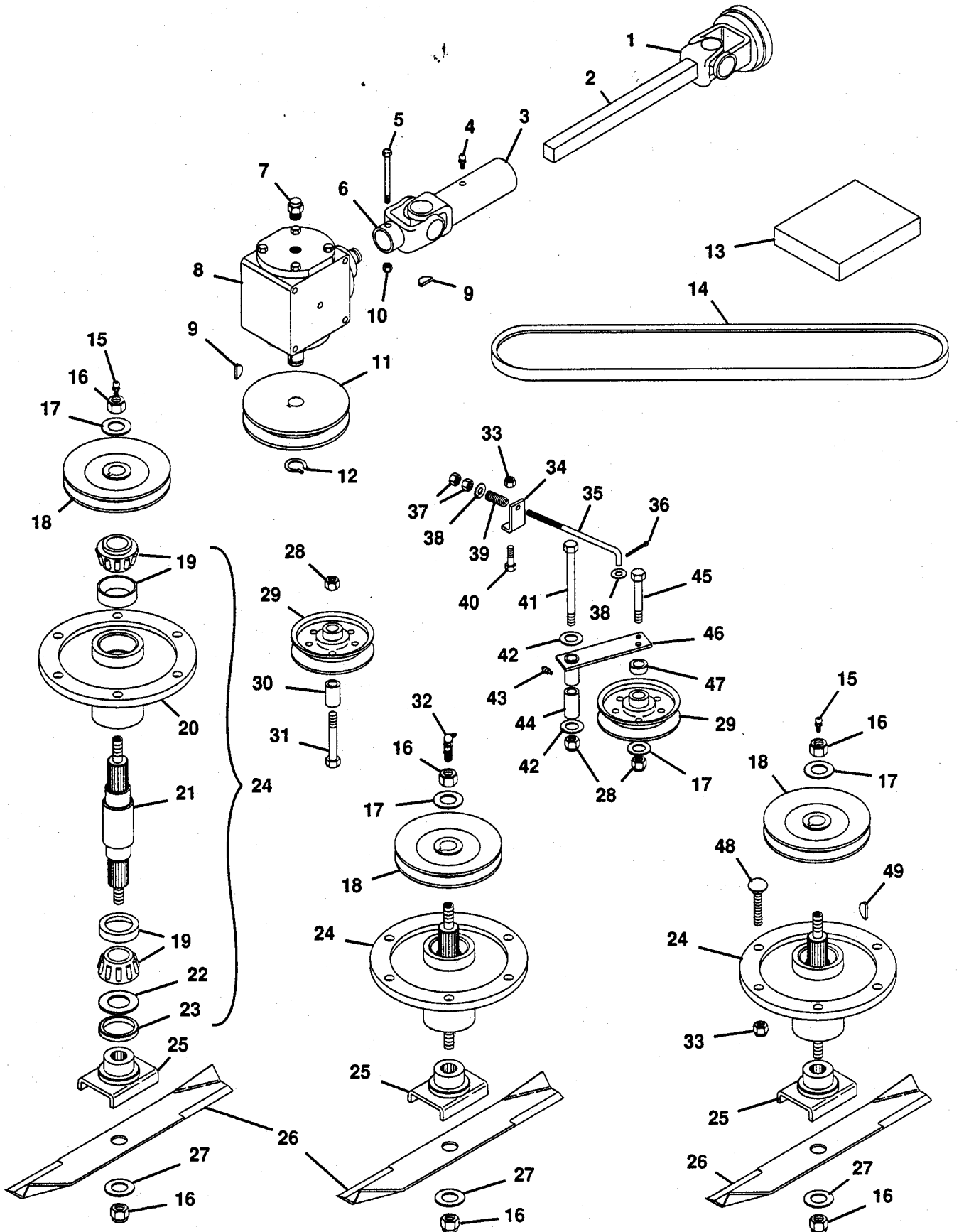
Mower Deck



Mower Deck

ITEM NO.	PART NO.	QTY.	DESCRIPTION	ITEM NO.	PART NO.	QTY.	DESCRIPTION
1	40309	1	Latch, Spring Assembly R.H.	24	49992	1	Bracket, Gearbox L.H.
	40311	1	Latch, Spring Assembly L.H.	25	15691	2	Pin, Cotter Hair
2	11272	2	Spring, Ext. 7.625x1.50x.70 Rate	26	120382	8	Washer, Lock 3/8 Reg.
3	120123	4	Pin, Cotter .125x1.25	27	180121	8	Bolt, Hex 3/8-16x.875
4	11273	2	Strap	28	50000	1	Weldment, Support Plate
5	31688	2	Latch, Pin	29	456007	2	Nut, Lock 3/4-10
6	45947	1	Weldment, Mower Mounting	30	271774	2	Bolt, Hex 3/4-10x2.75
7	10174	2	Bush., Flg. 764x1.47x.560 Ny.	31	180175	4	Bolt, Hex 1/2-13x1.25
8	10405	2	Pin, Hair	32	49986	1	Cover, Belt L.H.
9	46296	2	Keeper, Mower Pivot		49987	1	Cover, Belt R.H.
10	423315	2	Washer, Flat .813x1.37x.100	33	41674	2	Knob
11	120238	8	Nut, Jam 1/2-13 Hex	34	46035	2	Bush., St. .562x1.00x2.18 Stl.
12	46409	2	Pivot, Mower Lift	35	44905	2	Bush., St. .562x1.00x2.00 Stl.
13	187988	2	Pin, Cotter .187x1.25	36	120915	13	Bolt, 3/8-16x1.00 Rd Hd Sq Nk
14	40815	2	Rod, Lift	37	126803	4	Bolt, 1/2-13x3.50 Rd Hd Sq Nk
15	48967	1	Weldment, Discharge Chute	38	419455	2	Nut, Lock 5/16-18
16	180122	2	Bolt, Hex 3/8-16x1.00	39	124824	2	Nut, Jam 5/16-18 Hex
17	456004	15	Nut, Lock 3/8-16	40	49652	1	Plate, Deck Support
18	120394	6	Washer, Flat .406x.812x.065	41	49651	1	Weldment, 60" Mower Deck
19	180192	2	Bolt, Hex 1/2-13x3.50	42	40546	2	Bolt, 5/16-18x4.0 Rd Hd Sq Nk
20	49998	1	Weldment, 60" Hanger	NS	33926	1	Decal, Danger Hand
21	49996	1	Hanger, Inner	NS	33928	1	Decal, Warning Eye
22	435507	10	Nut, Lock 1/2-13	NS	46263	1	Decal, Belt Diagram
23	49993	1	Bracket, Gearbox R.H.	NS	49720	1	Decal, Width Of Cut

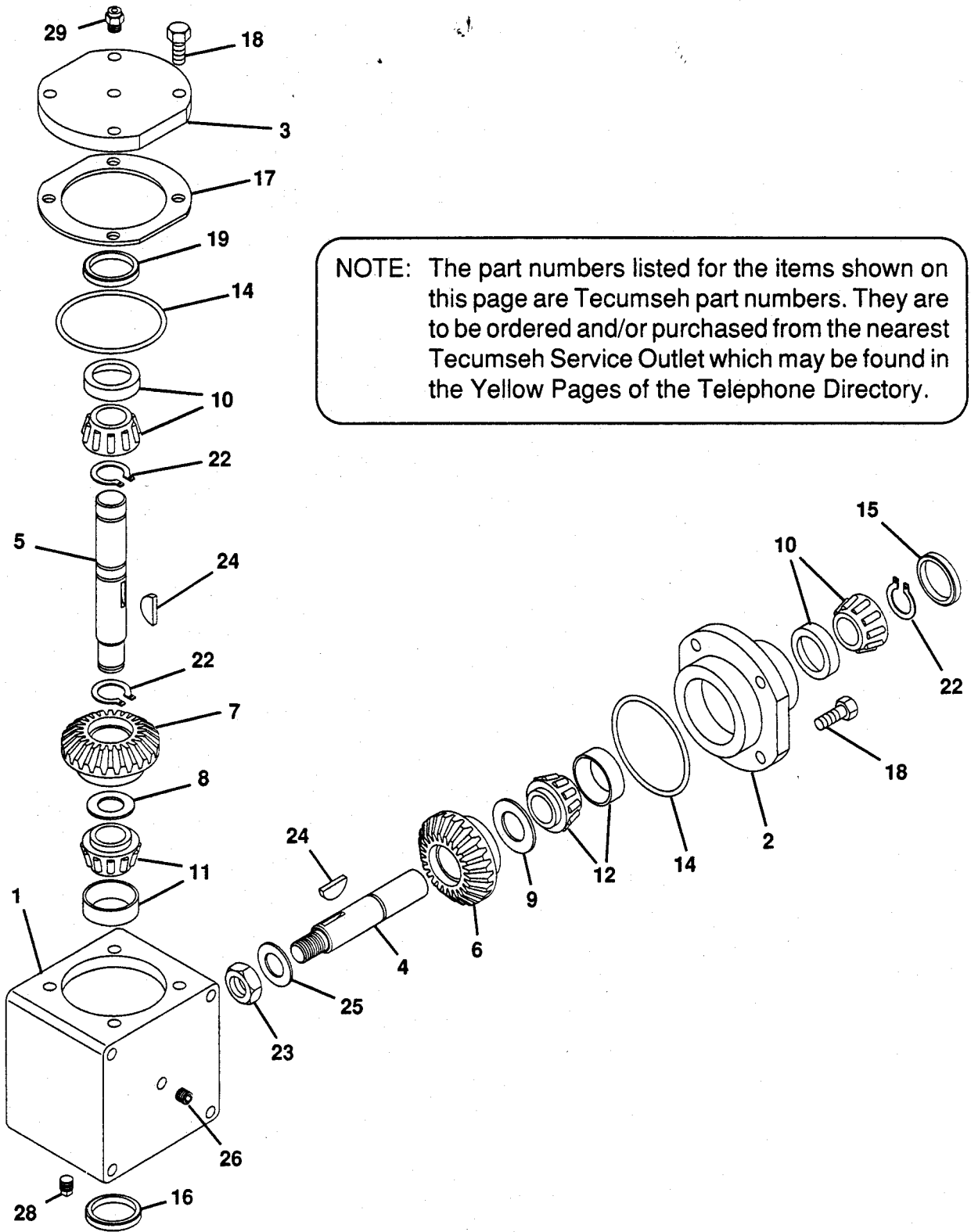
Mower Drive



Mower Drive

ITEM NO.	PART NO.	QTY.	DESCRIPTION	ITEM NO.	PART NO.	QTY.	DESCRIPTION
1	45954	AR	Yoke	28	435507	3	Nut, Lock 1/2-13
2	15802	1	Assembly, Male U-Joint	29	22063	2	Pulley, Flat Idler
3	35418	1	Assembly, Female U-Joint	30	44909	1	Bush., St. .562x.975x1.00 Stl.
4	411027	1	Fitting, Lube 1/4-28	31	180188	1	Bolt, Hex 1/2-13x2.75
5	180089	1	Bolt, Hex 5/16-18x2.25	32	273351	1	Fitting, Lube 65 Degree
6	45955	AR	Yoke	33	456004	19	Nut, Lock 3/8-16
7	48596	1	Plug, 1/8 Vent	34	31346	1	Support, Spring "B"
8	46036	1	Gearbox, 72" Mower	35	46264	1	Rod, Idler
9	124551	2	Key, Woodruff .250x.875 HRD #A	36	121222	1	Pin, Cotter .094x.75
10	419455	1	Nut, Lock 5/16-18	37	120369	2	Nut, Hex 3/8-24
11	44896	1	Sheave, Gearbox	38	120394	2	Washer, Flat .406x.812x.065
12	22080	1	Ring, Retaining .875 Shaft	39	11779	1	Spring, Comp. 1x.78x338 Lb/N
13	24560	1	Kit, Repair U-Joint	40	180122	1	Bolt, Hex 3/8-16x1.00
14	49066	1	Belt, Vee 60" Mower	41	180193	1	Bolt, Hex 1/2-13x3.75
15	411010	2	Fitting, Lube 1/8	42	120389	2	Washer, Flat .500x1.250x.083
16	418692	6	Nut, Lock 5/8-11	43	14406	1	Fitting, Lube 1/4-28
17	33845	4	Washer, Flat .687x1.312x.122	44	31363	1	Bush., St. .505x.855x2.50 Stl.
18	48874	3	Weldment, Spindle Sheave	45	180181	1	Bolt, Hex 1/2-13x2.00
19	38199	2	Assembly, Bearing	46	44910	1	Weldment, Idler Pivot
20	44898	1	Housing, Bearing	47	31368	1	Bush., St. .516x.875x.300 Stl.
21	34603	1	Shaft, Spindle	48	126406	18	Bolt, 3/8-16x1.375 Rd Hd Sq Nk
22	20743	1	Washer, Flat .975x1.970x.030	49	124553	3	Key, Woodruff .25x1.00 Hard #15
23	21211	1	Seal, Steel	NS	36799	AR	Spring
24	44899	3	Assembly, Spindle	NS	36800	AR	Collar, Locking
25	47684	3	Weldment, Blade Cradle	NS	36801	AR	Ring, Snap
26	48864	3	Blade	NS	145643	AR	Ball, Detent
27	131016	3	Washer, Flat .656x1.312x.095				

Gearbox



Gearbox

TECUMSEH PRODUCTS COMPANY
ENGINE AND TRANSMISSION GROUP
SERVICE DIVISION
GRAFTON, WISCONSIN

RIGHT ANGLE DRIVE MODEL NO. 1100-029

REF. NO.	PART NUMBER	PART NAME	QTY. REQ.
1	770076	Housing, Right angle drive	1
2	786104A	Cap, Retainer	1
3	786106	Cap, Retainer	1
4	776281	Shaft, Input (5.38" long)	1
5	776280	Shaft, Output (7.656" long)	1
6	778169	Gear, Bevel (27 teeth)	1
7	778173	Gear, Bevel (18 teeth)	1
8	780131	Shim (1-1/2" O.D. x 1-1/64" I.D. x .002 thick) (Use as required)	1
9	780138	Shim (2.000" O.D. x 1.531" I.D. x .002 thick) (Use as required)	1
10	780132	Bearing & Cup Assy. (This assembly may have a shim washer included. The shim washer is not required at this location.)	2
11	780132	Bearing & Cup Assy. (This is a factory sized assembly and may or may not include Ref. No. 8 shim washer. If Ref. No. 8 shim washer is supplied, it MUST be used in this location. All old shim washers MUST be discarded.)	1
12	780134	Bearing & Cup Assy. (This is a factory sized assembly and may or may not include Ref. No. 9 shim washer. If Ref. No. 9 shim washer is included, it MUST be used in this location. All old shim washers MUST be discarded.)	1
14	788063	"O" Ring	2
15	788064	Seal, Oil	1
16	788065	Seal, Oil	1
17	780136	Shim, Cap retainer	1
18	792037	Screw, Hex, hd. sems, 5/16-18 x 1	8
19	780137	Ring, Load	1
22	792113	Ring, Retaining	3
23	792110	Jam Nut, 3/4-16	1
24	792114	Key, Woodruff	2
25	792115	Washer, Flat	1
26	792116	Plug, Pipe, 1/4-18	2
28	792039	Plug, Pipe, 1/8-27	2
29	792118	Valve, Relief	1

SECTION 7

SPECIFICATIONS

Width of Cut: 60 in. (1524mm)

Heights of Cut:

Position	Height of cut
1	1.0 inches (25.4mm)
2	1.5 inches (38.1mm)
3	2.0 inches (50.8mm)
4	2.5 inches (63.5mm)
5	3.0 inches (76.2mm)
6	3.5 inches (88.9mm)
7	4.0 inches (101.6mm)
8	4.5 inches (114.3mm)

Mower Deck Construction: 10-gauge welded and bolted steel construction with a 3/16 in. (4.8 mm) thick reinforcing support plate

Blades: Number 3
Description 20-1/2 in. (521 mm) long; 1/4 in. (6.4 mm) thick high lift, heat-treated alloy steel

Spindle Assemblies: 1 in. (25 mm) diameter spindle shafts, turning on tapered roller bearings, mounted in cast-iron spindle housings

Discharge: Right side, folding discharge chute

Drive: Telescoping universal joint from PTO to right angle, cast iron gearbox with bevel gears and tapered roller bearings. The three spindles are driven by one spring-tensioned "B" section V-belt.

Tires: Size 9x3.50-4
Pressure 35-40 PSI (241-276 KN/m²)
Description Pneumatic with 3/4 in. (19mm) ball bearings and grease fittings.

Weight: 428 lbs. (194 kg)

Length: 44.9 in. (1140mm)

Width: Chute Down 72.1 in. (1831mm)
Chute Up 61.6 in. (1564mm)

Height: 14.3 in. (364mm)

SECTION 8

SET-UP INSTRUCTIONS

- 8.1 Remove the mower from the shipping container. Block the mower approximately six inches above the floor.
- 8.2 If needed, loosen the bolts which retain the mower hangers enough to set the caster support assemblies between the hangers. See Figure 3.
- 8.3 Set the right caster support assembly (the one with the stripe) on the right side and the remaining assembly on the left.
- 8.4 Tighten the bolts which retain the mower hangers.
- 8.5 Move the caster wheel support assemblies to the lowest height of cut position. Retain with two bolts each.
- 8.6 Service the mower as described in Section 3.
- 8.7 Put a jam nut on the lift rod until it is 5" to 5.1" from the bottom of the lift rod. Jam a second jam nut against the first nut. Repeat for the other lift rod. See Diagram 2.
- 8.8 Cut off the prop shaft as shown in Diagram 3.
- 8.9 Adjust the tire pressure in the gauge wheels to 35 to 40 psi (240 to 276 kN/m²).
- 8.10 See Section 3.6 for mower installation.

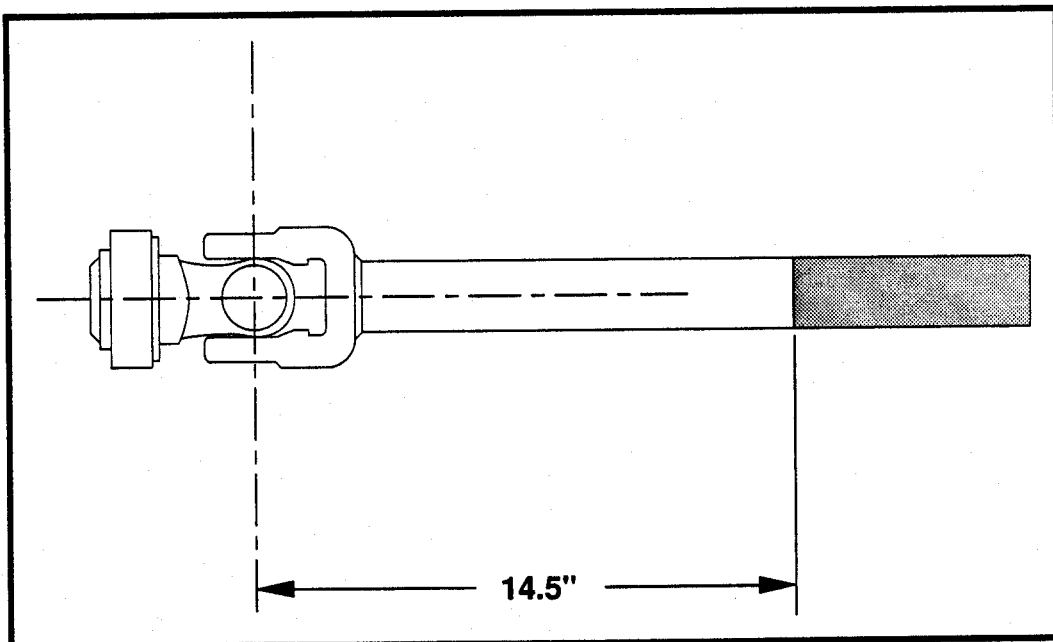


DIAGRAM 3

SECTION 9

LIMITED FIVE-YEAR WARRANTY

1. This Limited Five-Year Warranty is issued by Gravely International, Inc., only to the original purchaser. If Gravely equipment is leased by Gravely, this Warranty shall extend also to the original lessee as if such lessee were the original purchaser.
2. Gravely warrants that all new equipment manufactured by Gravely ("Gravely Products") shall be free of defects in material and workmanship for the term described in paragraph 4, below. Except as hereinafter provided, this Warranty does not cover any engine, tires or battery forming a part of the Gravely Product. Engine and tires are covered by and subject to separate warranties of the manufacturers thereof.
3. In the event that any Gravely Product warranted hereunder shall be defective or fail to conform with this Warranty, Gravely shall, subject to the provisions hereof, pay for, or provide labor and materials for, the repair or replacement of such defective Gravely Product.
4. This Warranty is for five years (60 months) from purchase date for Gravely Products used exclusively for personal, family or household purposes, and two years (24 months) for products used for other purposes (commercial use), excluding rental firms. Gravely products used for rental purposes will be warranted for 90 days. Repair of Gravely Products after the second year (24 months from date of purchase) shall be subject to a \$50.00 deductible for each repair. (After two years, Gravely agrees to repair or replace defective Gravely Products used exclusively for personal, family or household purposes only to the extent that the cost of such warranty covered repair or replacement exceeds \$50.00.)

Batteries are warranted by Gravely for a period of twelve (12) months only. If a battery shall fail within twelve (12) months of purchase, the replacement cost thereof shall be prorated over a twelve-month term based upon the number of months since purchase.
5. To obtain Warranty Service on a Gravely Product (including any battery or other component not manufactured by Gravely), use this procedure:
 - a. Notify the Gravely dealer from whom you purchased the equipment.
 - b. If you have moved and it is not convenient to notify the selling dealer, notify the nearest Gravely dealer. You should supply this dealer with a copy of the bill of sale as proof of the date of purchase.
 - c. Make arrangements to have the equipment delivered to the dealer (refer to paragraph 6 a., below).
 - d. If you have any questions concerning the Gravely Limited Warranty, they should be referred to:

Gravely International, Inc.
One Gravely Lane
Clemmons, NC 27012
Attn: Customer Service Department
 - e. Warranty Service on Gravely Products must be performed by an authorized Gravely dealer.
6. This Warranty does not cover the following:
 - a. Transportation to the Gravely dealership. (If the Gravely dealer provides transportation, he will charge for such service.)
 - b. Normal maintenance services and normal replacement of items such as spark plugs, belts, oil, oil filters, air filters, and mower, plow or cultivator blades, gauge wheels, skids and other wear items.
 - c. Any Gravely Product which has been altered or modified in any way.
 - d. Any repair or replacement occasioned by customer neglect or lack of proper maintenance. (The purchaser is responsible for making sure that Gravely Products are operated and serviced as directed in the applicable manual or service instruction. Incorrect use or maintenance will void this Warranty.)
 - e. Any repair occasioned by the use of any attachment not approved by Gravely. (The use of any such unapproved attachment will void this Warranty.)
7. GRAVELY MAKES NO OTHER EXPRESSED OR IMPLIED WARRANTIES, OR WARRANTIES AS TO THE MERCHANTABILITY OR FITNESS FOR A PARTICULAR PURPOSE. ALL WARRANTIES ARE LIMITED IN DURATION TO THE TERMS SET OUT IN PARAGRAPH 4, ABOVE. GRAVELY SHALL HAVE NO LIABILITY FOR INCIDENTAL OR CONSEQUENTIAL DAMAGES RESULTING FROM THE BREACH OF ANY WARRANTY, INCLUDING, BUT NOT LIMITED TO, LIABILITY FOR INCONVENIENCE, RENTAL OR PURCHASE OF REPLACEMENT EQUIPMENT, OR FOR LOSS OF PROFITS OR OTHER COMMERCIAL LOSS.
8. Some states do not allow limitations on how long an implied warranty lasts, so the above statement may not apply to you. Some states do not allow the exclusion or limitation of incidental or consequential damages, so the above limitation or exclusion may not apply to you.
9. This Warranty gives you specific legal rights, and you may have other rights which vary from state to state.
10. A Gravely product registration card is supplied with each Gravely Product. Please complete the card and return it to Gravely at the address listed on the card. The equipment registration card will be used by Gravely for:
 - a. Recording date of purchase.
 - b. Notification of owners in compliance with the Consumer Product Safety Act, should any notification be necessary.The return of such card is necessary for your warranty to be effective.
11. This Warranty is not subject to change or modification by anyone, including Gravely dealers and no Gravely dealer is authorized to make any representations or promises on Gravely's behalf.

 **GRAVELY**

One Gravely Lane, Clemmons, NC 27012