



60" CENTER MOUNT MOWER ADAPTER KIT

FORM NO. 46273(11-89)

PART NO. 43009

PRINTED IN USA
\$3.00

SECTION 1

INSTALLATION INSTRUCTIONS

- 1.1 Position the tractor behind the mower and guide the quick hitch pin into the tube of the adapter weldment. Retain with the flat washer and klik pin which come with the quick hitch pin kit. See Figure 1.
- 1.2 Put a film of grease on the PTO shaft. Unlock the locking collar on the prop shaft assembly by pulling it back. Slide the prop shaft assembly onto the PTO shaft. Release the locking collar and slide the prop shaft assembly back and forth on the PTO shaft to assure latching.
- 1.3 Apply multi-purpose grease to the fitting on the tube of the adapter weldment.
- 1.4 Height of Cut Adjustment:
 - A. Use a hoist or jack to lift the mower.
 - B. Move the caster wheel support weldments according to the desired height-of-cut. See mower operator's manual.
 - C. Visually level the tractor transmission with respect to the mower by repositioning the bolts in the notched straps and the slotted strap.
- 1.5 To remove, reverse steps 1.1 and 1.2 above.

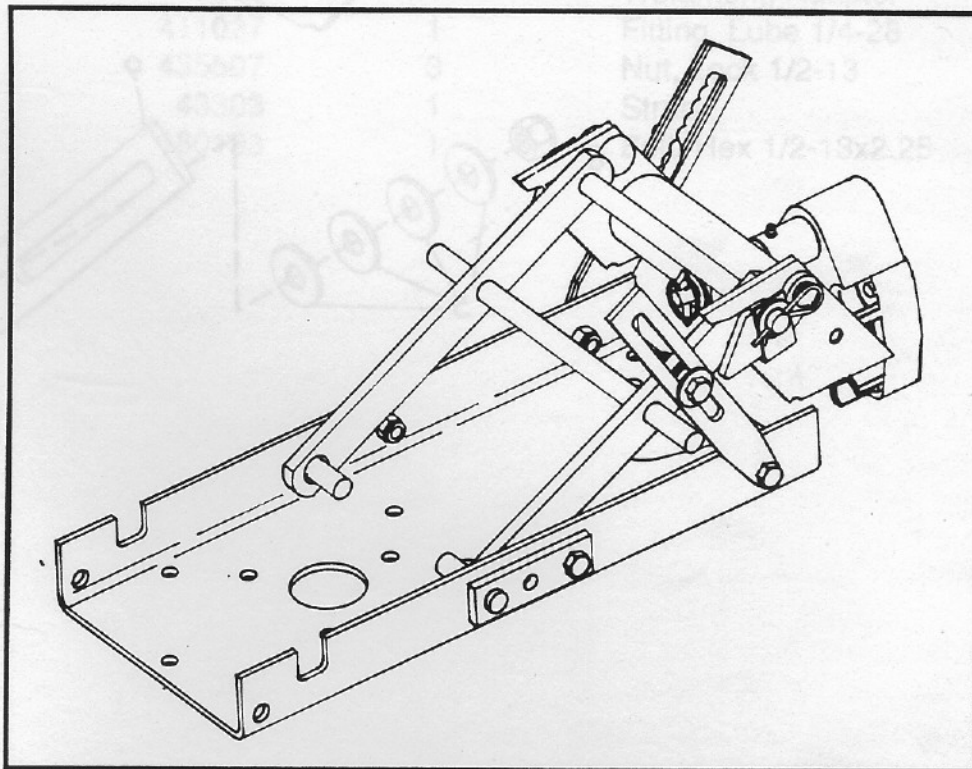
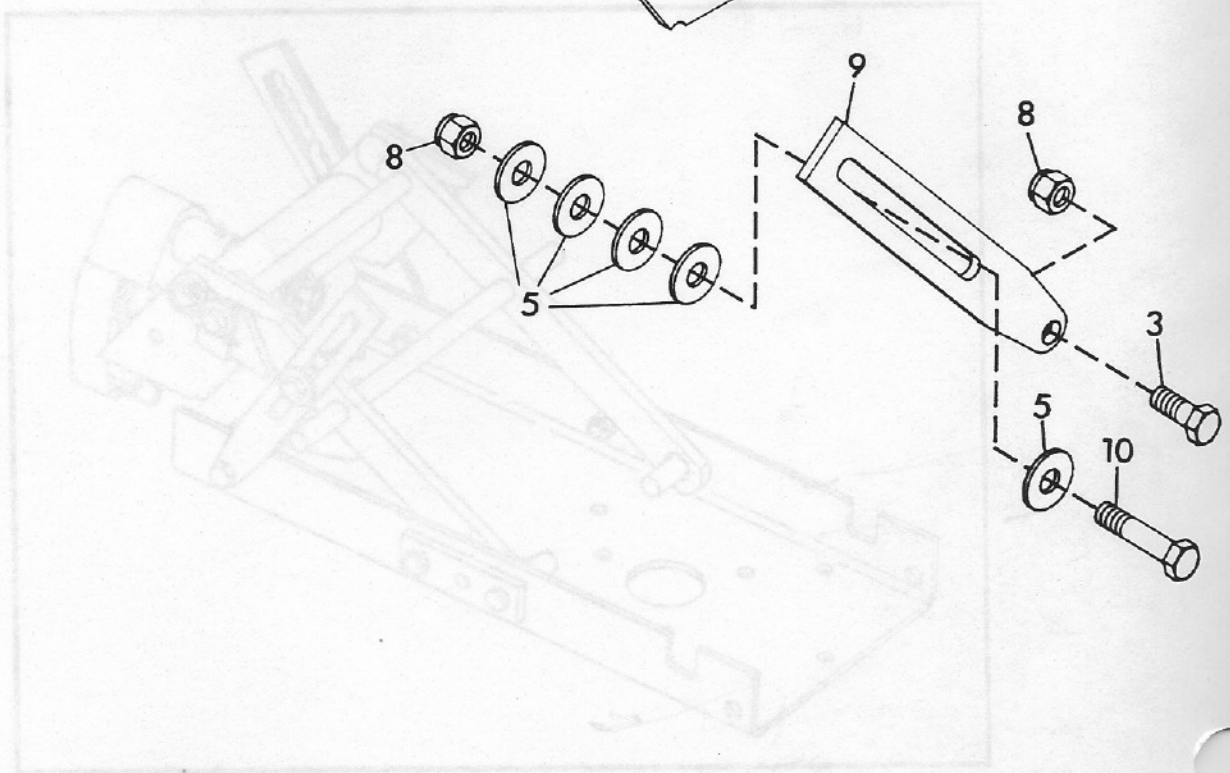
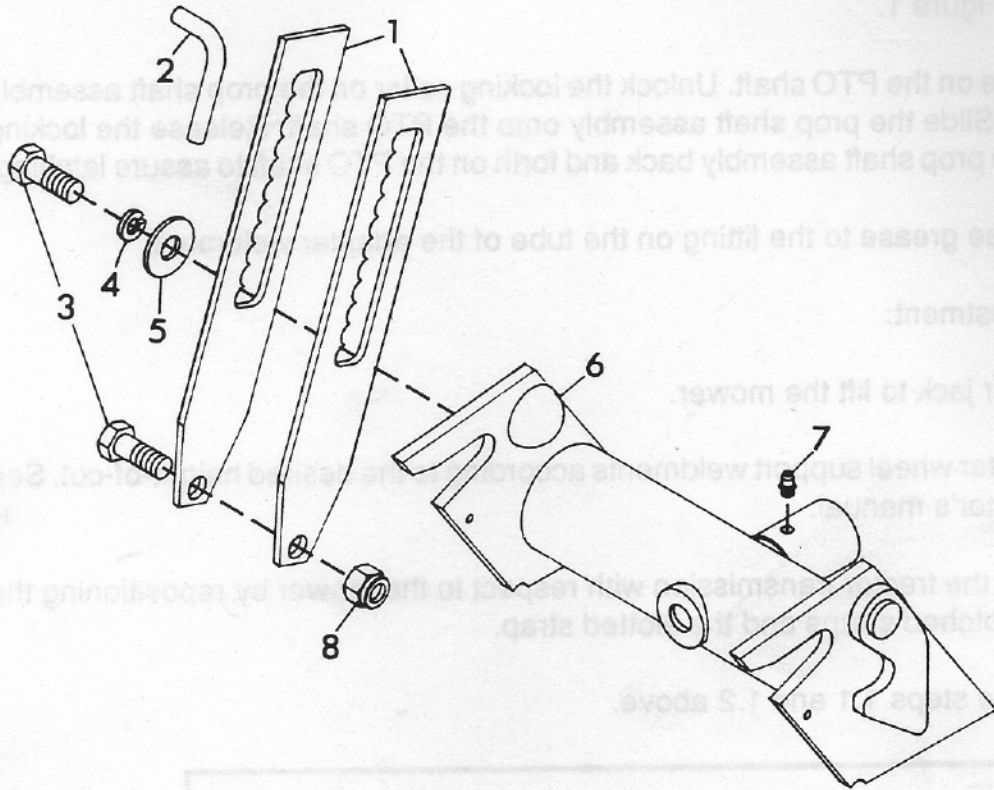


FIGURE 1

SECTION 2

ILLUSTRATED PARTS AND PARTS LIST



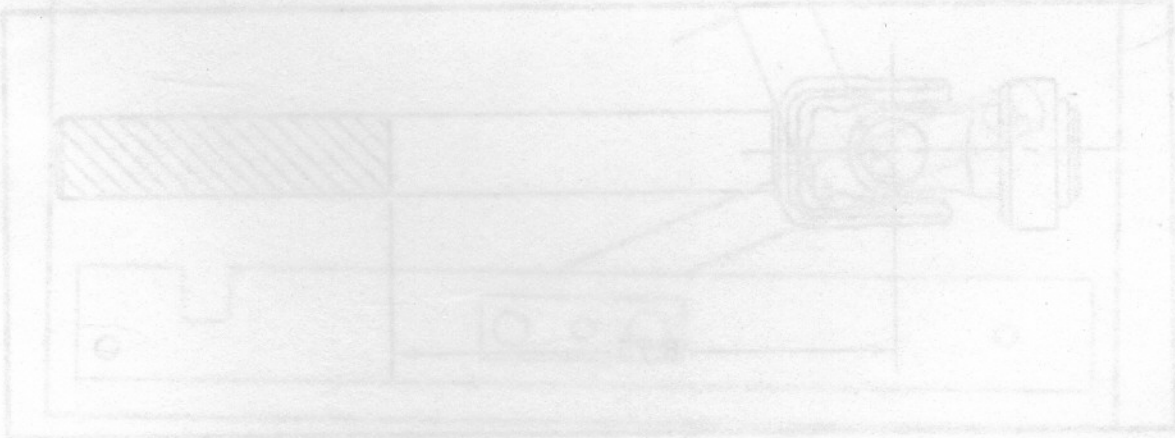
SECTION 3

SET-UP INSTRUCTIONS

NOTE: Refer to the Operator's Manual, Section 6 for Steps 2.1 through 3.4.

- 3.1 Remove the straps and retaining cotter pins on the pivot weldment.
- 3.2 Remove the bolt which fastens the lift bracket to the support plate and remove the plate. Put the bolt back in place and retain with the lock nut.
- 3.3 Remove the bolt from the middle of each pivot anchor weldment and discard.
- 3.4 Cut off the prep ends as shown in Diagram 1.
- 3.5 Fasten the two notched straps to the right side of the greater support plate with a 1/2-13x1.25 hex bolt and lock nut. Fasten the other strap to the left side of the mower support plate with a 1/2-13x1.25 hex bolt and lock nut.
- 3.6 Put a flat washer on the 1/2-13x1.25 hex bolt. Put three flat washers on the bolt and end of the lift arm weldment. Fasten the lift arm weldment to the lift arm with a 1/2-13x1.25 hex bolt and lock nut. See Figure 2. (NO Cotter pins are used.)
- 3.7 Put a rod on the end of the lift arm weldment and close the lift arm. See Figure 3.
- 3.8 Position the plate in the lift arm and retain with a flat washer and 1/2-13x1.25 hex bolt. See Figure 4. Refer to Section 1 to select the position which corresponds with the desired height cut.

ITEM NO.	PART NO.	QTY.	DESCRIPTION
1	43360	2	Strap
2	43361	1	Pin
3	180175	3	Bolt, Hex 1/2-13x1.25
4	120384	1	Washer, Lock 1/2 Reg.
5	37842	6	Washer, Flat 1.38x.56 Hard
6	43306	1	Weldment, Adapter
7	411027	1	Fitting, Lube 1/4-28
8	435507	3	Nut, Lock 1/2-13
9	43303	1	Strap
10	180183	1	Bolt, Hex 1/2-13x2.25



SECTION 3

SET-UP INSTRUCTIONS

NOTE: Refer to the 60" Center Mount Mower Operator's Manual, Section 6 for Steps 3.1 through 3.4.

- 3.1 Remove the straps and retaining cotter pins on the pivot arm weldment.
- 3.2 Remove the bolt which fastens the lift bracket to the support plate and remove the plate. Put the bolt back in place and retain with the lock nut.
- 3.3 Remove the bolt in the middle of each pivot anchor weldment and discard.
- 3.4 Cut off the prop shaft as shown in Diagram 1.
- 3.5 Fasten the two notched straps to the right side of the mower support plate with a 1/2-13x1.25 hex bolt and lock nut. Fasten the other strap to the left side of the mower support plate with a 1/2-13x1.25 hex bolt and lock nut.
- 3.6 Put a flat washer on the 1/2-13x2.25 hex bolt. Put the bolt through the slot in the slotted strap. Put three flat washers on the bolt and slide it through the hole in the mower pivot arm weldment. Retain with one flat washer and a lock nut. See Figure 2. (NOTE: On older mowers it may be necessary to drill the hole in the pivot arm weldment. See Figure 3.)
- 3.7 Put the adapter weldment on the rod on the end of the pivot arm weldment and close the latches. Put the mower pivot keepers, followed by a flat washer and hairpin cotter on each end of the shaft of the pivot arm weldment. See Figure 4.
- 3.8 Position the slots in the notched straps over the threaded hole in the adapter weldment and retain with a pin, flat washer, lock washer and 1/2-13x1.25 hex bolt. See Figure 4. Refer to Section 1 to select the position which corresponds with the desired height of cut.

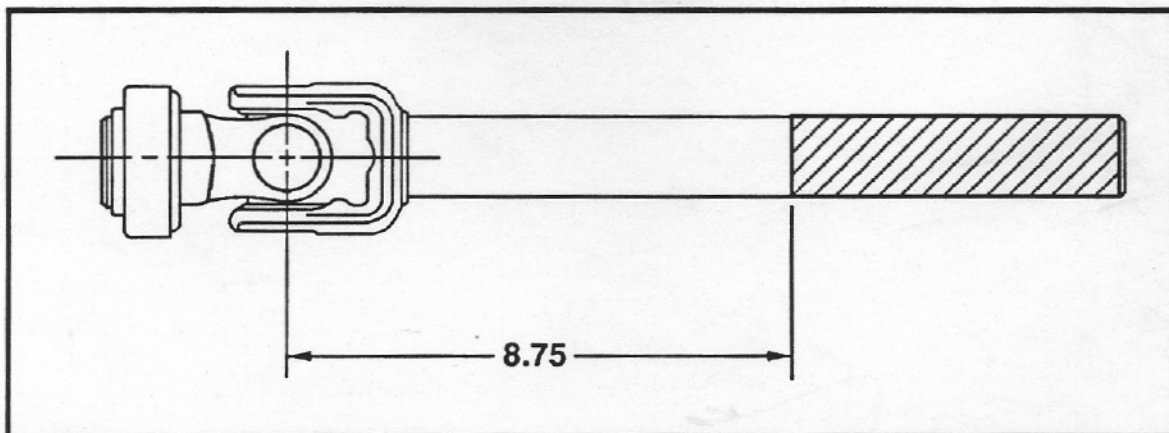
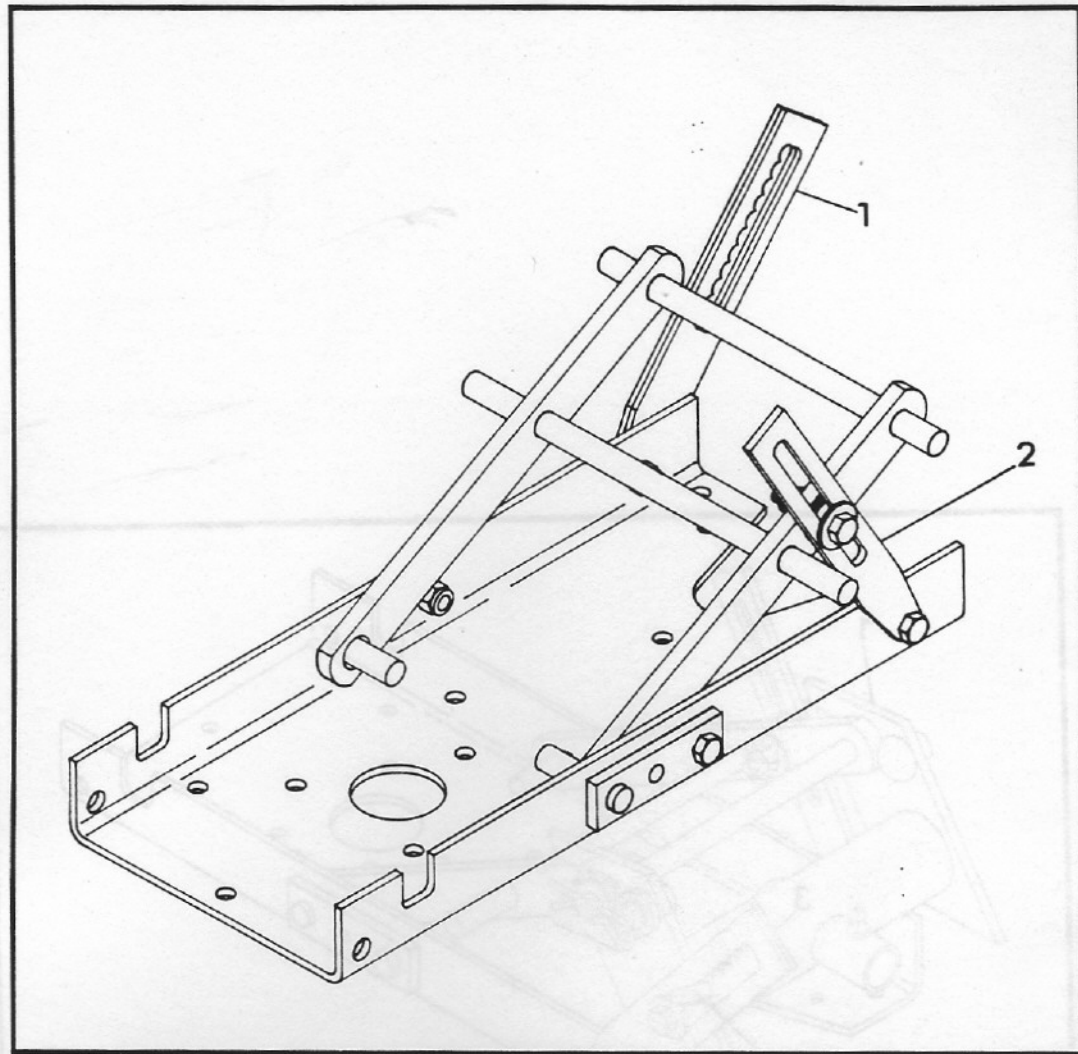


DIAGRAM 1



1 - Notched Straps
2 - Slotted Strap
FIGURE 2

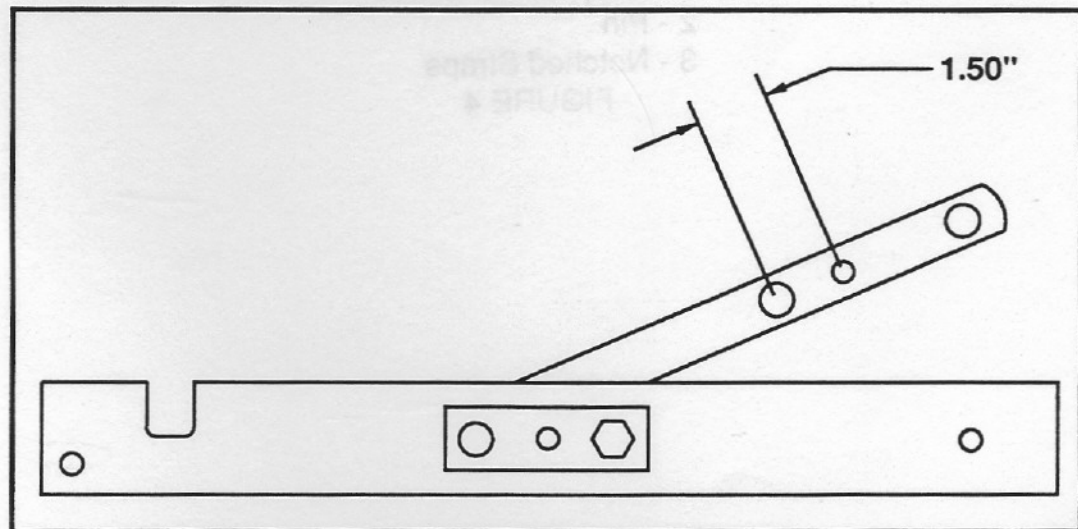


FIGURE 3

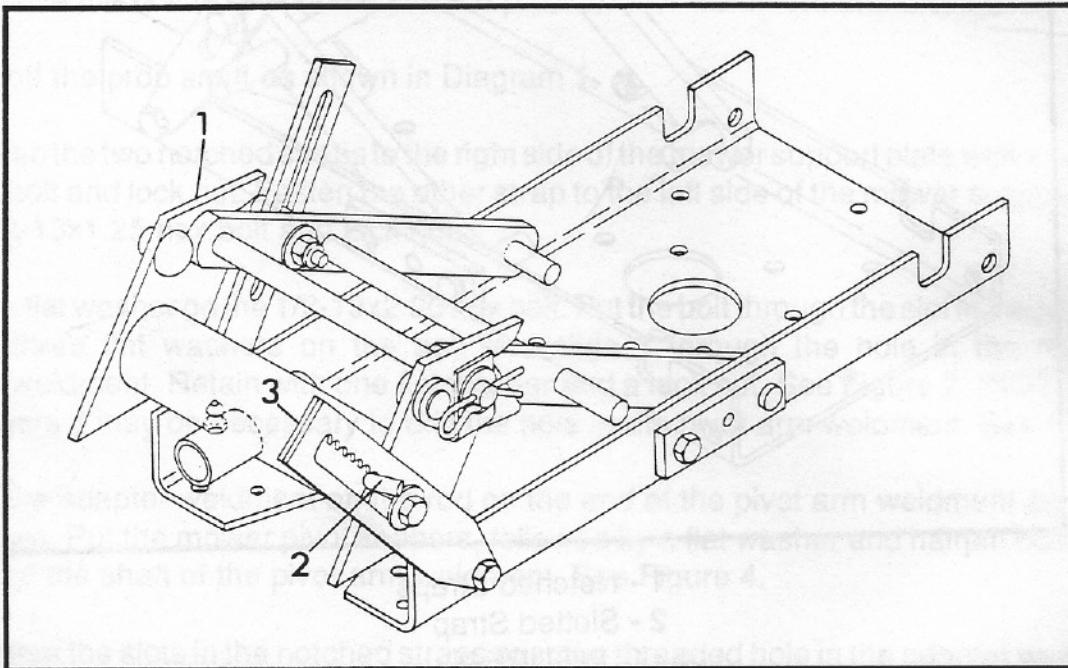
SECTION 3

SET-UP INSTRUCTIONS

Refer to the Operator Manual, Mower Operator's Manual, Section 5 or 5.4 through 3.4.

Remove the STRAPS and STRAP PINS on the pivot arm weldment.

Remove the pivot arm fasteners, the support plate and remove the pivot arm weldment from the mower deck.



- 1 - Adapter Weldment
 - 2 - Pin
 - 3 - Notched Straps
- FIGURE 4