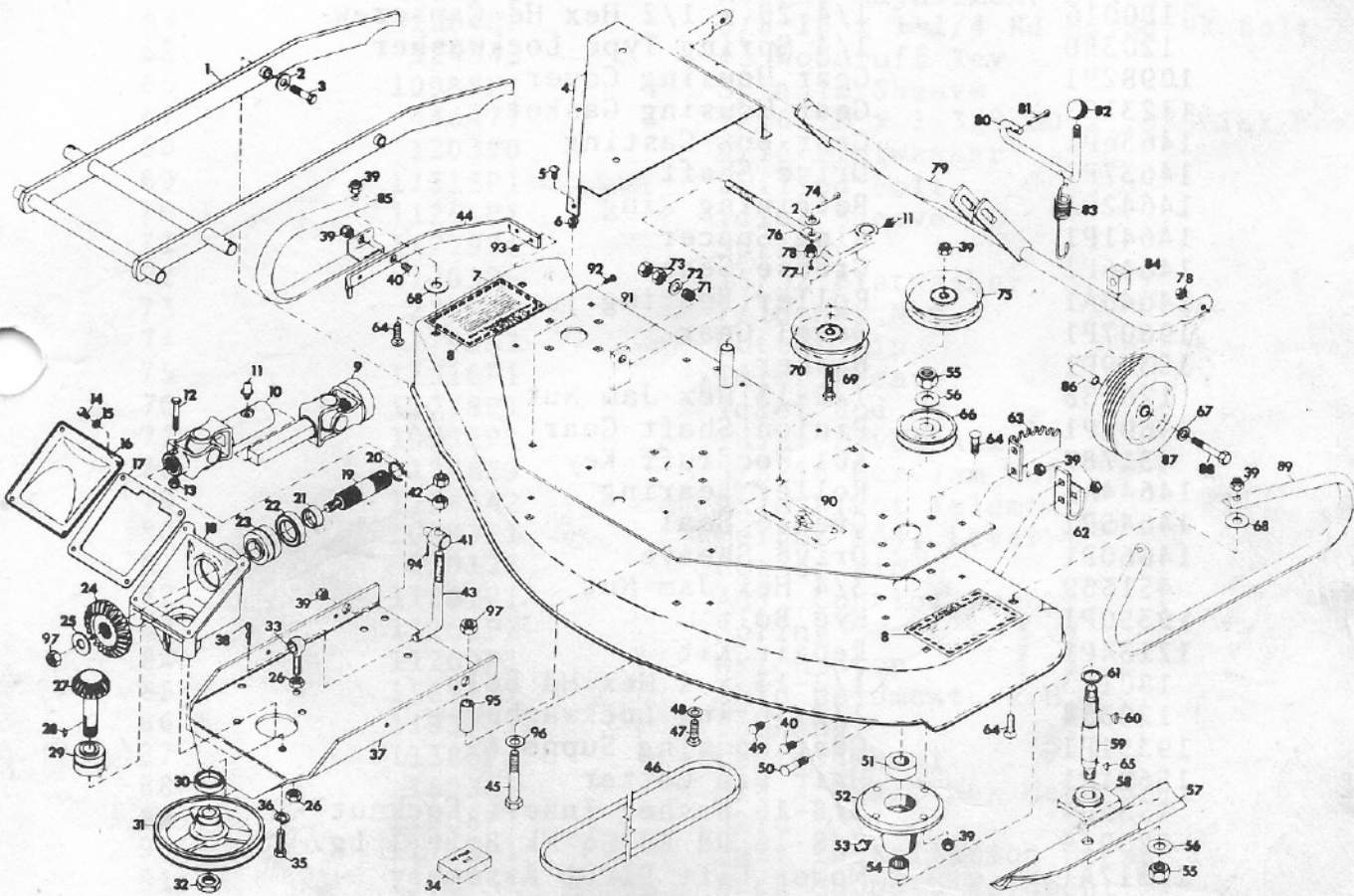


GRAVELY

To continue its program of quality and design improvement, the manufacturer reserves the right to change specifications, design or prices without notice and without incurring obligation.

ILLUSTRATED 50" ROTARY MOWER PARTS LIST

Model Number	19473E1
Effective Date	9-01-72
Form Number	19833P1



<u>ITEM NO.</u>	<u>PART NO.</u>	<u>DESCRIPTION</u>
1	19355A1	Pivot Arm Weldment
2	120394	13/32 ID x 13/16 OD x .065 Thk Washer
3	180126	3/8-16 x 1-1/2 Hex Head Bolt Plated
4	10994P2	Pulley Cover, R.H.
NS	10995P2	Pulley Cover, L.H.
5	160515	1/4-20 Pan Hd Machine Screw 1/2 Lg.
6	11777P1	Plastic Grommet
7	9363A1	Deck Weldment
8	8549P1	Danger Decal
9	19074P1	Prop Shaft - Sq. Bar
10	13518P1	Female U-Joint End
11	9411027	Lube Fitting
12	180044	1/4-20 x 2 Hex Head Bolt
13	9419454	1/4-20 Washer Insert Locknut
14	180016	1/4-20 x 1/2 Hex Hd Capscrew
15	120380	1/4 Spring Type Lockwasher
16	10982P1	Gear Housing Cover
17	11231P2	Gear Housing Gasket
18	14636P1	Gear Box Casting
19	14637P1	Drive Shaft
20	14642P1	Retaining Ring
21	14641P1	Ring Spacer
22	14646P1	Grease Seal
23	14640A1	Roller Bearing
24	19607P1	Bevel Gear
25	15369P1	Washer
26	120238	1/2-13 Hex Jam Nut
27	19608P1	Pinion Shaft Gear
28	431787	#61 Woodruff Key
29	14644A1	Roller Bearing
30	14645P1	Grease Seal
31	14660P1	Drive Sheave
32	451539	3/4 Hex Jam Nut
33	19350P1	Eye Bolt
34	12134P1	Repair Kit
35	180173	1/2-13 x 1 Hex Hd Bolt
36	120384	1/2 Spring Lockwasher
37	19351P1	Gear Housing Support
38	15691P1	Hair Pin Cotter
39	456004	3/8-16 Washer Insert Locknut
40	120915	3/8-16 Rd Rd Sq Nk Bolt 1 Lg.
41	11317A1	Mower Lift Pivot Assembly
42	120238	1/2-13 Hex Jam Nut
43	19201P1	Lift Rod
44	11267P1	Safety Shield
45	180192	1/2-13 x 3-1/2 Hex Hd Bolt
46	11216P1	V-Belt
47	126416	3/8-16 x 1-3/4 Rd Hd Sq Nk Bolt
48	120388	3/8 Flatwasher
49	126227	3/8 x 3/4 Carriage Bolt
50	126419	3/8 x 2 Carriage Bolt

<u>ITEM NO.</u>	<u>PART NO.</u>	<u>DESCRIPTION</u>
51	11641P1	Ball Bearing
52	10984P2	Bearing Housing
53	9411010	Lincoln 5000 Grease Fitting
54	11235P1	Needle Bearing
55	9418692	5/8 Locknut
56	131016	21/32 x 1-5/16 x .095 Flatwasher
57	11234P1	Blade
58	10986P2	Blade Cradle
59	19443P1	Bearing Housing Shaft
60	124549	#9 Woodruff Key
61	11229P1	Oil Seal
62	11264P1	Axle Support Bracket
63	11265P1	Height Adjustment Bracket
64	126402	3/8-16 x 1-1/4 Rd Hd Sq Nk Bolt
65	124543	#3 Woodruff Key
66	10988P1	Spindle Sheave
67	446477	7/16 ID x 1-3/8 OD x .083 Thk Washer
68	120390	9/16 Flatwasher
69	11313P1	Drilled Bolt
70	11255P1	Idler Sheave
71	11779P1	Spring
72	120395	15/32 Flatwasher
73	271501	7/16 Hex Nut
74	179252	Cotter Pin
75	11316P1	Idler Sheave
76	11778P1	Idler Rod
77	10992P1	Idler Pivot Arm
78	124829	3/8-16 Hex Jam Nut
79	11243A2	Axle Pivot Weldment
80	10993P1	Height Adj. Lever
81	120123	Cotter Pin
82	11261P1	Adj. Control Knob
83	11268P2	Spring
84	11260P1	Nylon Stop
85	15697A1	Skid Weldment, R.H.
86	11937P1	Bushing
87	11386P1	Caster Wheel
88	189305	3/8 x 3-1/2 Hex Head Bolt
89	11938P1	Skid
90	11715P1	Belt Installation Decal
91	19357A1	Deck Support Weldment
92	126198	10-24 x 3/4 Rd Hd Sq Nk Bolt
93	190254	10-24 Nut Washer Insert
94	142485	Groove Pin
95	19348P1	Spacer
96	120396	17/32 x 1-1/16 x .095 Washer
97	435507	1/2-13 Washer Insert Locknut
NS	14635A1	Drive Assembly