

GRAVELLY®

Specialty Air Cleaners
Engines and Exhaust Systems

INDEX

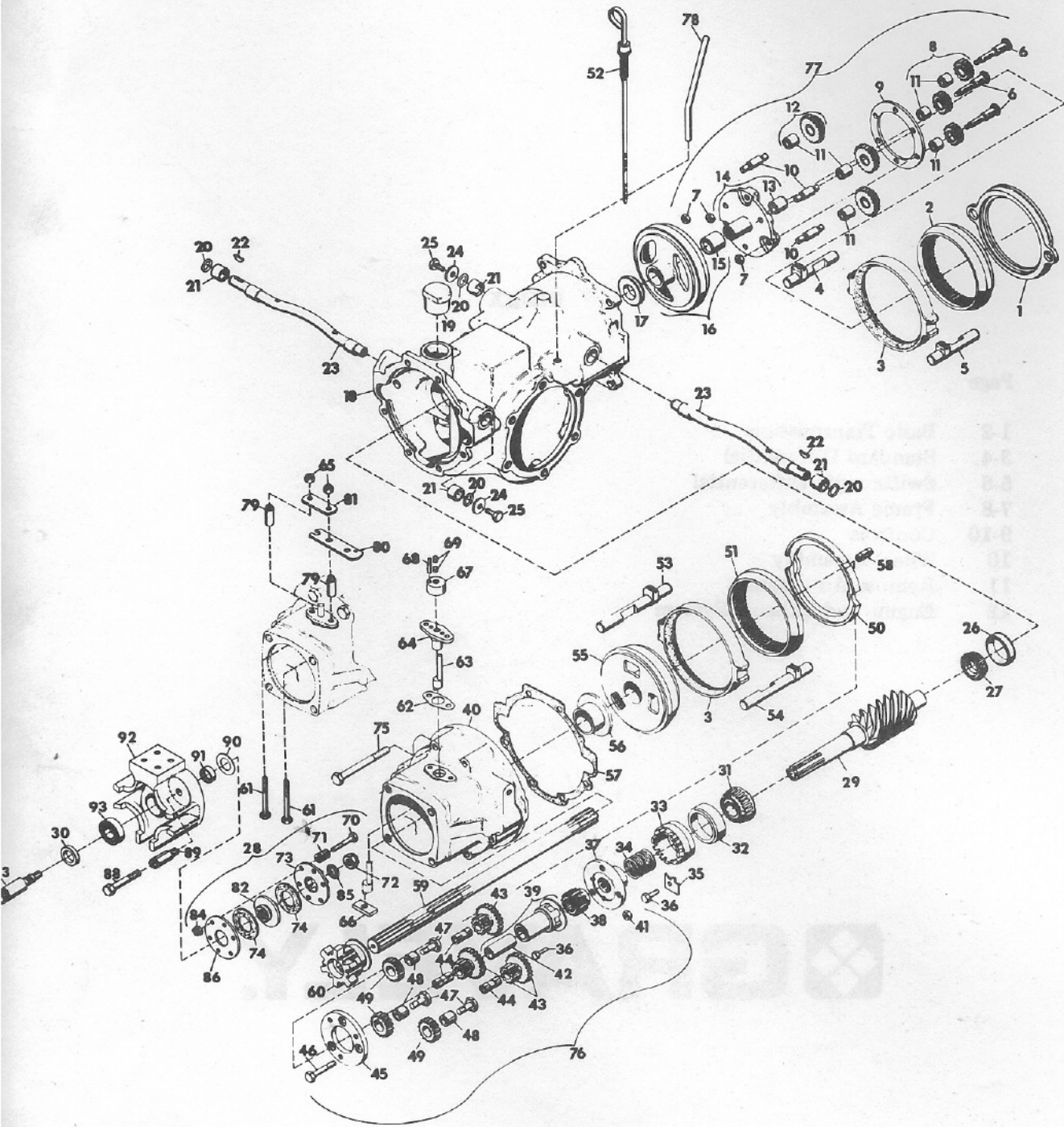
**5000 SERIES
ROOFER TRACTORS
ILLUSTRATED
PARTS LIST**

INDEX

Page	
1-2	Basic Transmission
3-4	Standard Differential
5-6	Swiftamatic Differential
7-8	Frame Assembly
9-10	Controls
10	Wheel Assembly
11	Remote Air Cleaner
12	Engine and Exhaust System



BASIC TRANSMISSION

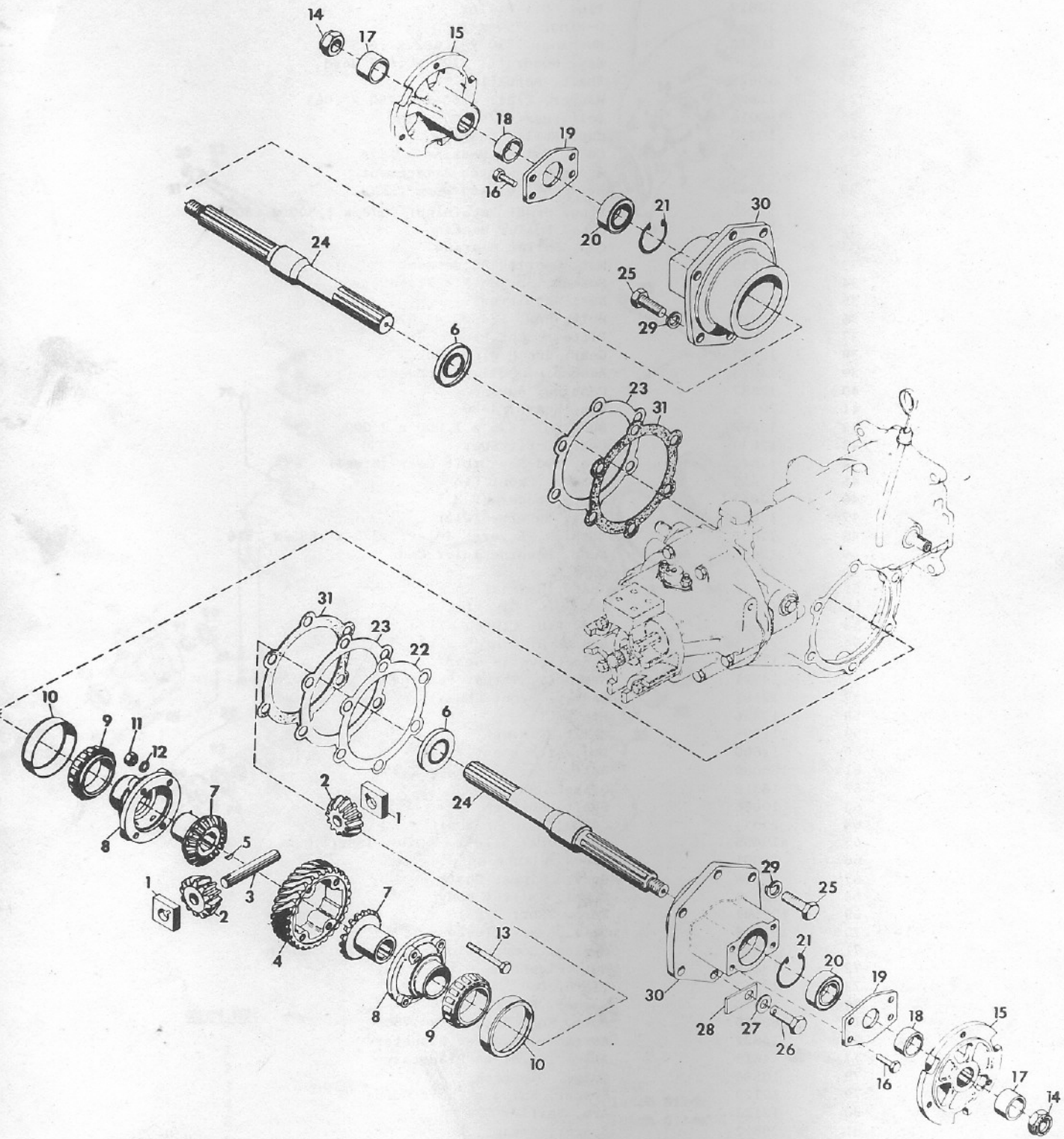


ITEM NO.	PART NO.	DESCRIPTION
1	11183	Spacer, Rear
2	11182	Gear, Rear Ring
3	12644	Assembly, Clutch Cup
4	11185	Rod, Rear R.H. Clutch Slide
5	11184	Rod, Rear L.H. Clutch Slide
6	11181	Bolt, Orbit Gear
7	11342	Nut, Lock; 5/16-18 L.H. Thread
8	11179	Assembly, External Orbit Gear
9	11178	Spacer, Pin
10	11174	Pin, Hi-Lo Orbit Gear
11	11177	Bushing; .501 x .627 x .495
12	11175	Assembly, Internal Orbit Gear
13	11172	Bushing; .737 x .877 x .682
14	11171	Assembly, Planet Gear Carrier

BASIC TRANSMISSION

ITEM NO.	PART NO.	DESCRIPTION
15	11169	Bushing; 1.250 x 1.502 x 1.312
16	11168	Assembly, Ring Gear and Bushing
17	12645	Plate, Rear Thrust
18	10628	Chassis
19	10617	Plug, Oil Filler
20	10663	O-Ring; .750 x 1.00
21	10618	Bushing; .750 x 1.002 x .625
22	124545	Key, Woodruff; .125 x .625 Hard
23	10625	Shaft, Actuating
24	12694	Washer, Flat; .265 x 1.250 x .063
25	180016	Bolt, Hex; 1/4-20 x .500
26	10390	Cup, Roller Bearing
27	10389	Cone, Roller Bearing
28	22484	Assembly, Clutch Attachment
29	21242	Weldment, 6 Lead Worm (5200)
30	11841	Ring, Steel Retaining; .978 x 1.500 x .300
31	12332	Cone, Roller Bearing
32	12333	Cup, Roller Bearing
33	12635	Nut, Bearing Adjustment
34	12663	Spacer, Spring Pin Plate
35	12648	Nut, Adjusting
36	180018	Bolt, Hex; 1/4-20 x .625
37	12633	Plate, Front Pin
38	12637	Gear, Sun Pinion Spur
39	14923	Assembly, Quill and Bushing
40	12587	Casting, Advance
41	120375	Nut, Hex; 1/4-20
42	12662	Bushing; .875 x 1.000 x 2.000
43	12639	Gear, Orbit Spur
44	12640	Pin, Fwd-Rev Orbit Gear (Steel)
45	12655	Spacer, Front Pin
46	12643	Bolt, Spacer (R.H.)
47	12658	Bolt, Reverse Idler
48	12657	Bushing, Reverse Idler; .375 x .685 x .516
49	12656	Gear, Reverse Idler Spur
50	12636	Cup, Gear
51	12632	Gear, Internal Spur
52	10622	Assembly, Dipstick
53	12677	Rod, R.H. Clutch Slide
54	12678	Rod, L.H. Clutch Slide
55	12654	Cone, Reverse Gear
56	14921	Assembly, Thrust Bearing
57	12591	Gasket, Front Chassis
58	13456	Pin, Roll
59	11298	Shaft, Pinion
60	12660	Dog, Attachment
61	180089	Bolt, Hex; 5/16-18 x 2.250
62	18318	Gasket, Shipper Shaft
63	10686	Shaft, Shipper
64	23034	Guide, Shipper Shaft
65	419455	Nut, Lock; 5/16-18 Washer Insert
66	12601	Block, Trunnion
67	10688	Body, Shipper Shaft
68	12320	Dowel, Shifter Body
69	102591	Screw, Set; 3/8-16 x .25 Hex Socket
70	181618	Bolt, Hex; 5/16-24 x 1.750
71	12871	Spring, Compression; .750 x 2200 Lb/in
72	13419	Nut, Flywheel
73	12867	Plate, Dog
74	12870	Washer, Friction
75	180735	Bolt, Hex; 5/16-18 x .750
76	14922	Assembly, Fwd-Rev Planetary
77	14615	Assembly, Hi-Lo Planetary
78	10586	Guide, Dipstick
79	12123	Spacer, Shipper Shaft Guide
80	12122	Arm, Shifter
81	20822	Spacer, Strap
82	22480	Plate, Drive
83	22482	Shaft, Quick Hitch
84	18277	Nut, Lock; 5/16-24 L.T.
85	138557	Washer, Lock; 5/8 Internal Tooth
86	12868	Plate, Back
88	180173	Bolt, Hex; 1/2-13 x 1.00
89	22479	Stud, Quick Hitch
90	11983	Bearing, Thrust; 1.012 x 1.750 x .125
91	11227	Bearing, Needle; 1.000 x 1.250 x 2.000
92	22483	Adapter, Quick Hitch
93	11293	Bearing, Ball; 1.000 x 2.000 x .562

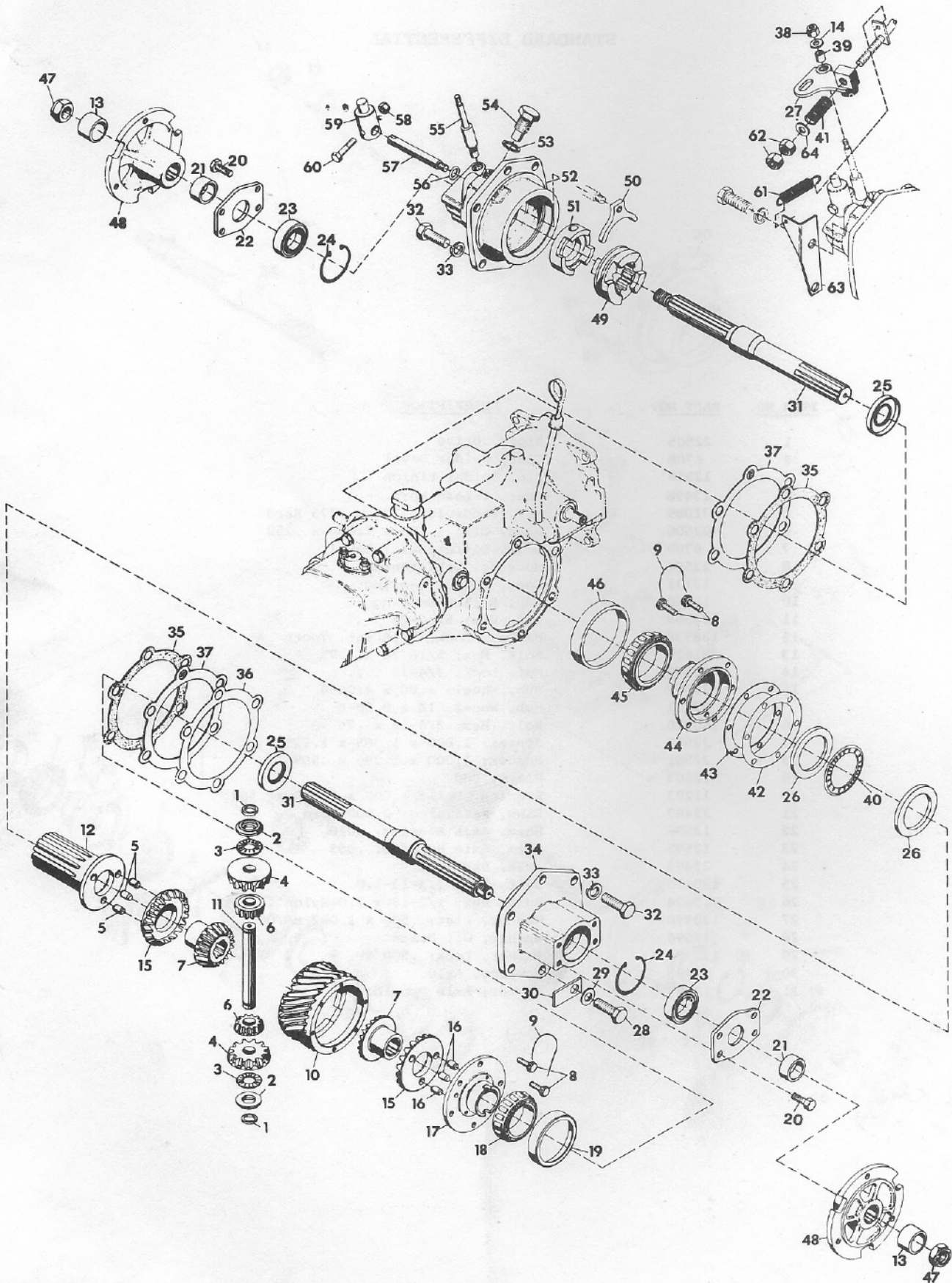
STANDARD DIFFERENTIAL



STANDARD DIFFERENTIAL

<u>ITEM NO.</u>	<u>PART NO.</u>	<u>DESCRIPTION</u>
1	22505	Block, Drive
2	6708	Gear, Spider Bevel
3	12556	Pin, Spider Pinion
4	13498	Gear, 6-Lead Worm
5	271089	Key, Woodruff; .125 x .375 Hard
6	22506	Seal, Oil; 1.188 x 2.000 x .250
7	6709	Gear, Differential Bevel
8	22504	Housing, Differential
9	12131	Cone, Roller Bearing
10	12130	Cup, Roller Bearing
11	120368	Nut, Hex; 5/16-24
12	138538	Washer, Lock; 5/16 Int. Tooth
13	181623	Bolt, Hex; 5/16-24 x 2.75
14	22502	Nut, Lock; 3/4-10 L.T.
15	22507	Hub, Wheel; 4.80 x 4.00-8
	22551	Hub, Wheel; 18 x 8.50-8
16	180120	Bolt, Hex; 3/8-16 x .75
17	22512	Spacer; 1.000 x 1.385 x 1.125
18	22501	Spacer; 1.000 x 1.385 x .509
19	22503	Plate, End
20	11293	Bearing, Ball; 1.000 x 2.000 x .562
21	22497	Ring, Retaining; 2.000 Bore
22	12596	Shim, Axle Housing; .020
23	12595	Shim, Axle Housing; .005
24	22493	Axle, Straight
25	180173	Bolt, Hex; 1/2-13-1.0
26	13624	Bolt, Hex; 1/2-13 x 1.0 Nylon Insert
27	120396	Washer, Flat; .500 x 1.062 x .095
28	12594	Washer, Oil Drain
29	120384	Washer, Lock; .500 SP
30	22495	Housing, Axle
31	12597	Gasket, Axle Housing

SWIFTAMATIC DIFFERENTIAL

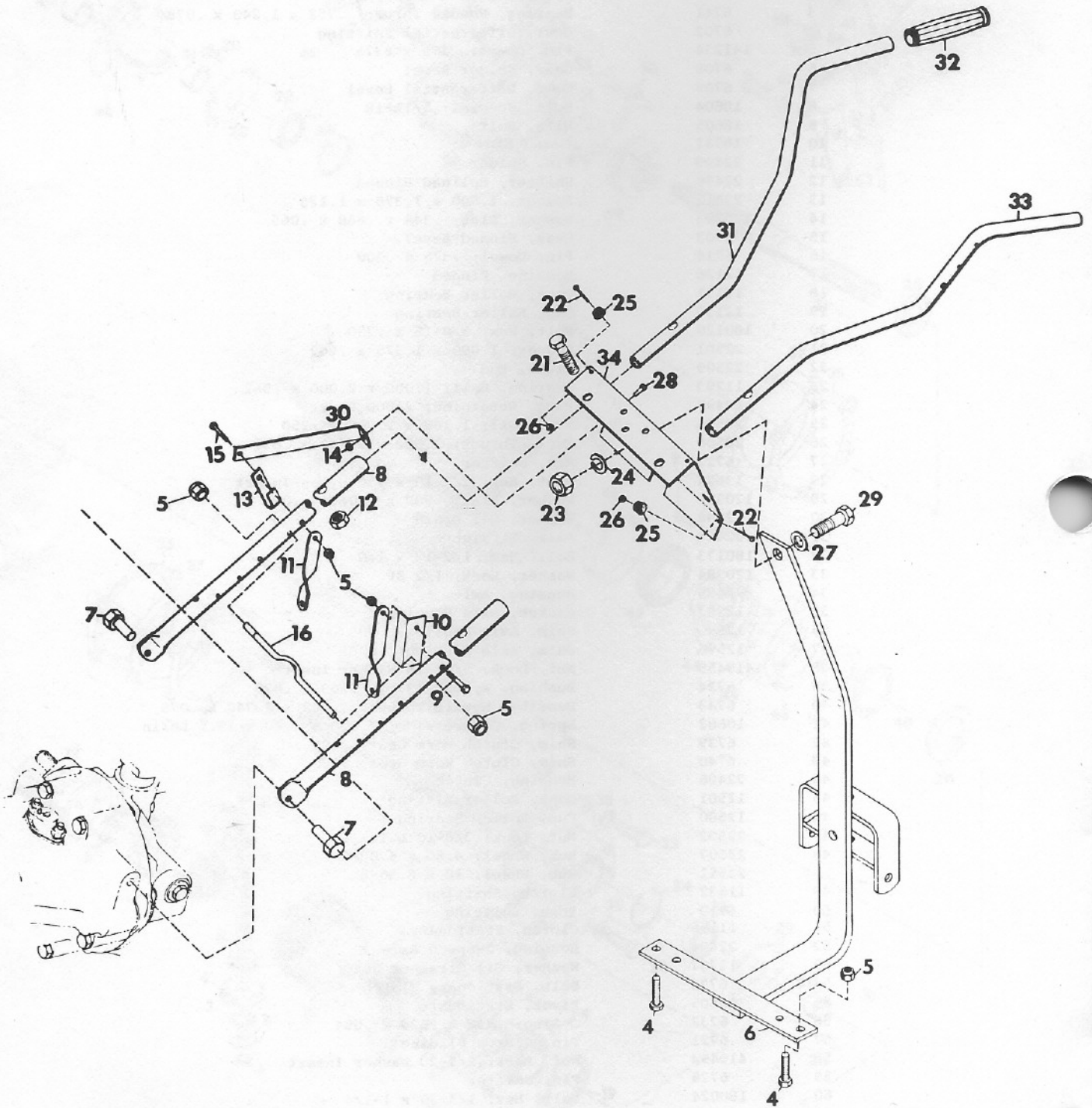


SWIFTAMATIC DIFFERENTIAL

<u>ITEM NO.</u>	<u>PART NO.</u>	<u>DESCRIPTION</u>
1	15733	Ring, Retaining; .750 Shaft
2	15734	Spacer; .765 x 1.245 x .20
3	6741	Bearing, Needle Thrust; .752 x 1.240 x .078
4	6702	Gear, Differential Shifting
5	141234	Pin, Dowel; .375 x .375
6	6708	Gear, Spider Bevel
7	6709	Gear, Differential Bevel
8	18604	Bolt, Special; 5/16-18
9	18605	Wire, Bolt
10	15731	Gear, 6 Start
11	22499	Pin, Spider
12	22498	Shifter, Splined Pinned
13	22512	Spacer, 1.000 x 1.375 x 1.125
14	120393	Washer, Flat; .344 x .688 x .065
15	6703	Gear, Pinned Bevel
16	6714	Pin, Dowel; .375 x .500
17	12126	Housing, Pinned
18	12131	Cone, Roller Bearing
19	12130	Cup, Roller Bearing
20	180120	Bolt, Hex; 3/8-16 x .750
21	22501	Spacer; 1.000 x 1.375 x .509
22	22503	Plate, End
23	11293	Bearing, Ball; 1.000 x 2.000 x .562
24	22497	Ring, Retaining; 2.000 Bore
25	22506	Seal, Oil; 1.188 x 2.000 x .250
26	22500	Race, Thrust; 2.002 x 2.740 x .031
27	6723	Arm, Shifter
28	13624	Bolt, Hex; 1/2-13 x 1.0 Nylon Insert
29	120396	Washer, Flat; .500 x 1.062 x .095
30	12594	Washer, Oil Drain
31	22493	Axle, Straight
32	180173	Bolt, Hex; 1/2-13 x 1.0
33	120384	Washer, Lock; 1/2 SP
34	22495	Housing, Axle
35	12597	Gasket, Axle Housing
36	12595	Shim, Axle Housing; .005
37	12596	Shim, Axle Housing; .020
38	419455	Nut, Lock; 5/16-18 Washer Insert
39	6724	Bushing, Nylon; .375 x .503 x .875
40	6743	Bearing, Needle Thrust; 2.002 x 2.740 x .078
41	10682	Spring, Compression; 2.000 x 7.20 x 15.5 Lb/in
42	6739	Shim, Clutch Worm Gear; .005
43	6740	Shim, Clutch Worm Gear; .020
44	22496	Housing, Clutch
45	12501	Cone, Roller Bearing
46	12500	Cup, Roller Bearing
47	22502	Nut, Lock; 3/8-10 L.T.
48	22507	Hub, Wheel; 4.80 x 4.00-8
	22551	Hub, Wheel; 18 x 8.50-8
49	11632	Clutch, Shifting
50	6719	Yoke, Shifting
51	11156	Clutch, Stationary
52	22494	Housing, 2-Speed Axle
53	12707	Washer, Oil Strainer Nut
54	6734	Bolt, Stationary Clutch
55	10505	Pivot, Stationary
56	6732	O-Ring; .438 x .625 x .094
57	6721	Pin, Clutch Sliding
58	419454	Nut, Lock; 1/4-20 Washer Insert
59	6726	Pin, Shifter
60	180024	Bolt, Hex; 1/4-20 x 1-1/4
61	10681	Spring, Extension; 2.50 x .62 x 5.8 Lb/in
62	124925	Nut, Jam; 3/8-24
63	10680	Bracket, 2-Speed Spring
64	120394	Washer, Flat; .406 x .812 x .065

FRAME ASSEMBLY

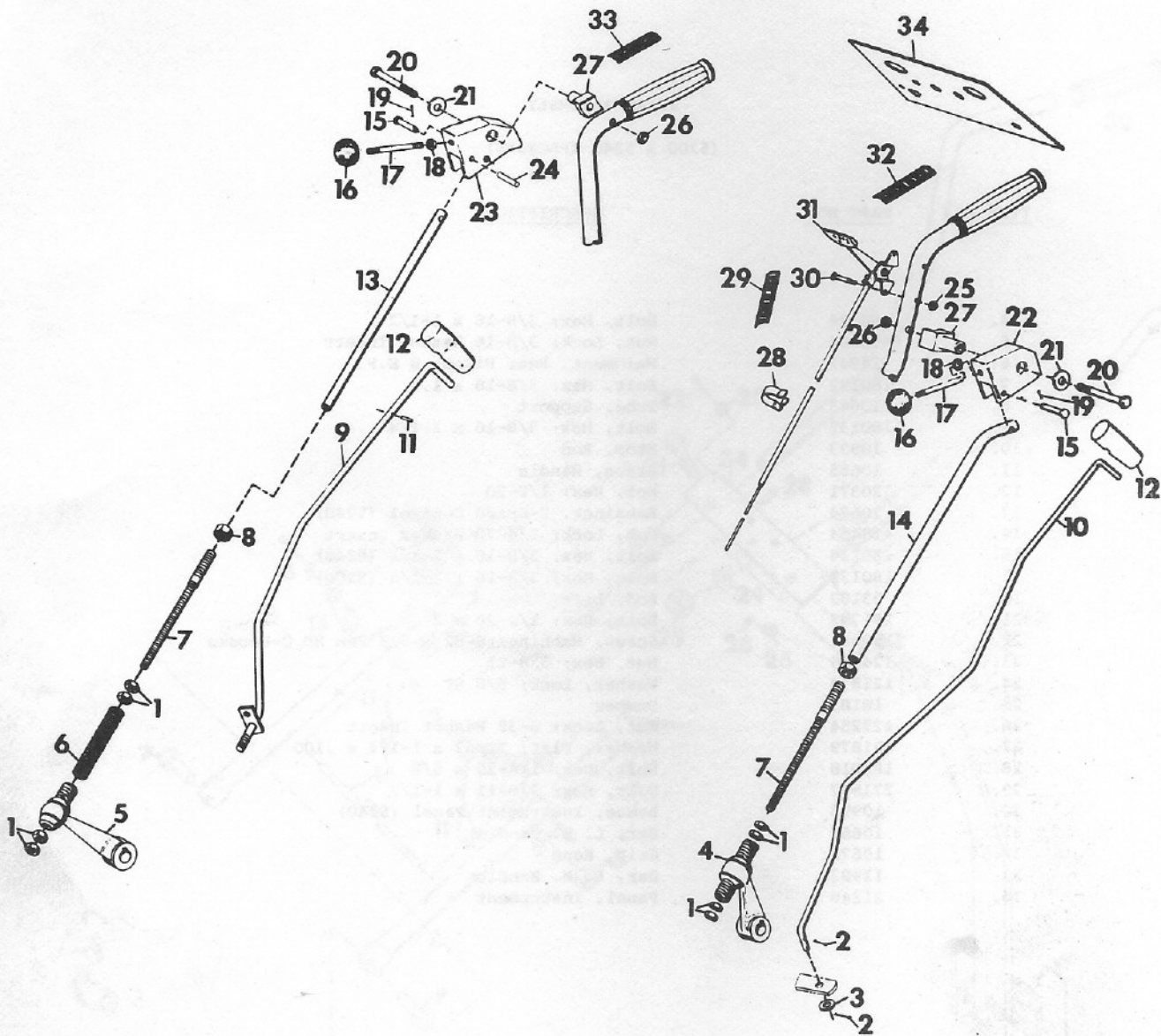
(5200 & 5240 TRACTORS)



FRAME ASSEMBLY
(5200 & 5240 TRACTORS)

<u>ITEM NO.</u>	<u>PART NO.</u>	<u>DESCRIPTION</u>
4.	180126	Bolt, Hex; 3/8-16 x 1-1/2
5.	456004	Nut, Lock; 3/8-16 Washer Insert
6.	14941	Weldment, Rear Hitch; 8 H.P.
7.	180122	Bolt, Hex; 3/8-16 x 1.0
8.	10643	Tube, Support
9.	180132	Bolt, Hex; 3/8-16 x 2-1/4
10.	10933	Stop, Rod
11.	10655	Brace, Handle
12.	120371	Nut, Hex; 1/2-20
13.	10684	Retainer, 2-Speed Control (5240)
14.	419454	Nut, Lock; 1/4-20 Washer Insert
15.	180134	Bolt, Hex; 3/8-16 x 2-1/2 (5240)
	180132	Bolt, Hex; 3/8-16 x 2-1/4 (5200)
16.	23182	Rod, Lift
21.	181705	Bolt, Hex; 1/2-20 x 2
22.	159341	Screw, Machine; 6-32 x 5/8 Pan HD C-Recess
23.	124589	Nut, Hex; 5/8-11
24.	121574	Washer, Lock; 5/8 SP
25.	18183	Bumper
26.	427254	Nut, Lock; 6-32 Washer Insert
27.	421879	Washer, Flat; 21/32 x 1-1/4 x .100
28.	180018	Bolt, Hex; 1/4-20 x 5/8
29.	271547	Bolt, Hex; 5/8-11 x 1-1/2
30.	10996	Brace, Instrument Panel (5240)
31.	10658	Bar, L. H. Handle
32.	10671	Grip, Hand
33.	11982	Bar, R. H. Handle
34.	21248	Panel, Instrument

CONTROLS

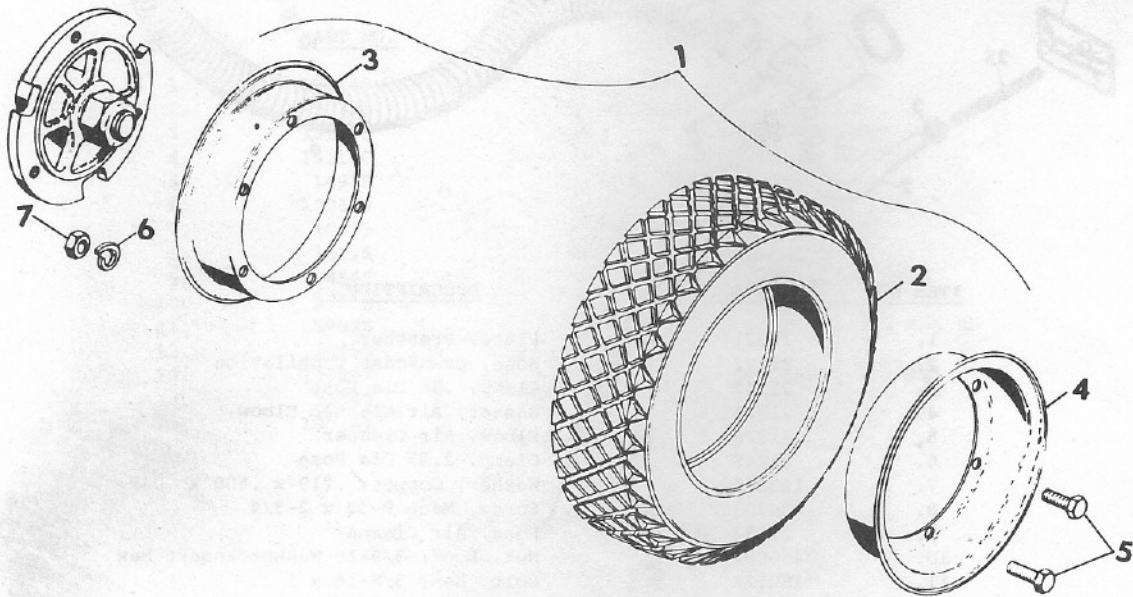


ITEM NO.	PART NO.	DESCRIPTION
1.	124829	Nut, Jam; 3/8-16
2.	121224	Pin, Cotter; 3/32 x 1
3.	120394	Washer, Flat; 13/32 x 13/16 x .065
4.	21383	Assembly, Hi-Lo Lever
5.	21384	Assembly, Fwd-Rev Lever
6.	21506	Spring, Fwd-Rev Neutral Return
7.	20269	Rod, Control Extension
8.	120238	Nut, Jam; 1/2-13
9.	10677	Weldment, 2-Speed Control Rod (5240)
10.	10932	Rod, Attachment Throwout
11.	423664	Pin, Spring; 3/32 x 11/16 (5240)
12.	10683	Handle, Rubber Shifter
13.	20267	Rod, Fwd-Rev Control
14.	20268	Rod, Hi-Lo Control
15.	10672	Pin, Clevis; .375 x 1.250
16.	10670	Knob, Control

CONTROLS

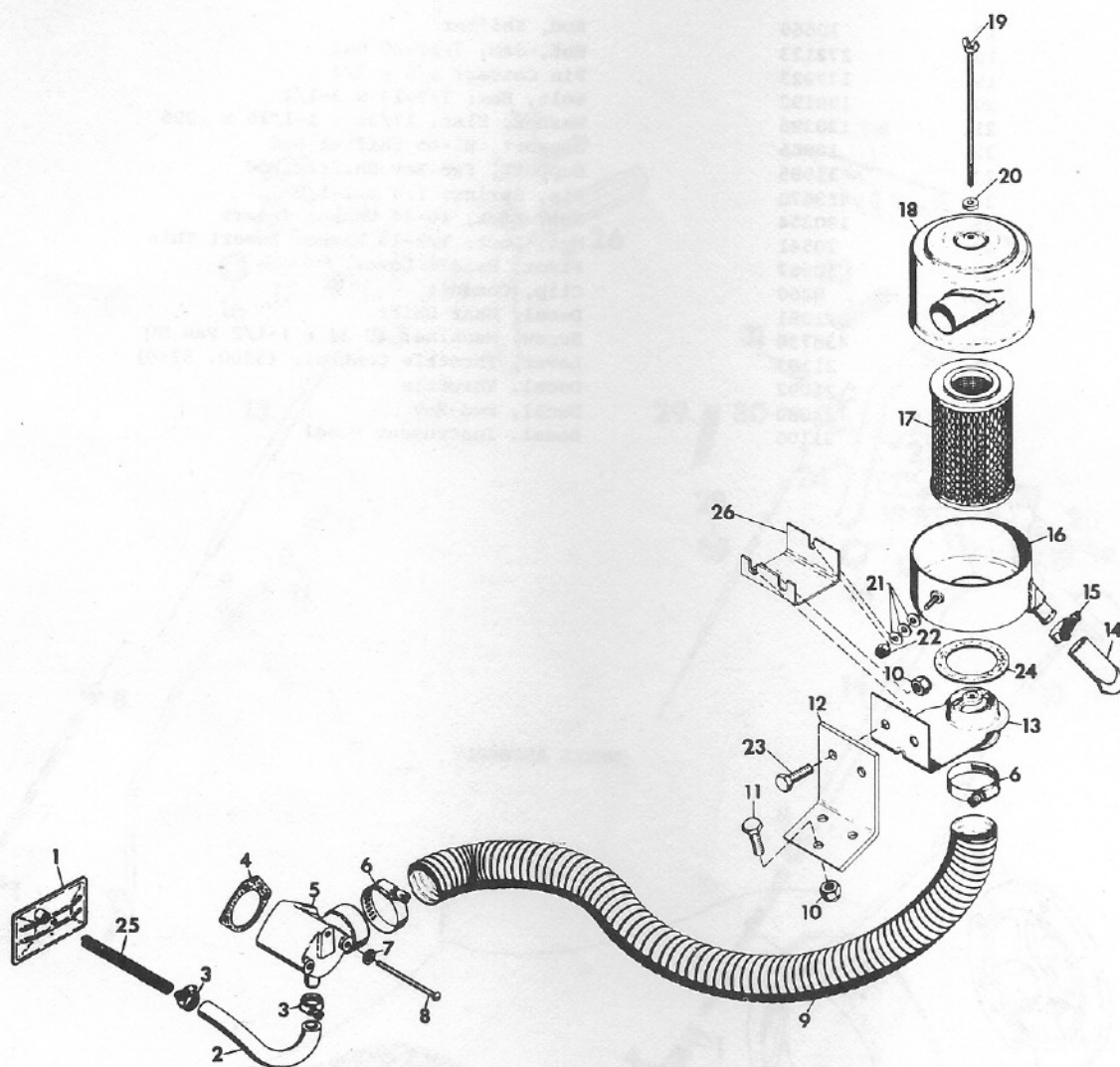
<u>ITEM NO.</u>	<u>PART NO.</u>	<u>DESCRIPTION</u>
17.	10669	Rod, Shifter
18.	272123	Nut, Jam; 7/16-20 Hex
19.	177923	Pin Cotter; 1/8 x 3/4
20.	180192	Bolt, Hex; 1/2-13 x 3-1/2
21.	120396	Washer, Flat; 17/32 x 1-1/16 x .095
22.	10666	Support, Hi-Lo Shifter Rod
23.	11985	Support, Fwd-Rev Shifter Rod
24.	453670	Pin, Spring; 1/4 x 1-1/8
25.	190254	Nut, Lock; 10-24 Washer Insert
26.	20541	Nut, Lock; 1/2-13 Washer Insert Thin
27.	10667	Pivot, Handle Lever
28.	8260	Clip, Conduit
29.	21091	Decal, Gear Shift
30.	436738	Screw, Machine; 10-24 x 1-1/2 Pan HD
31.	21103	Lever, Throttle Control; (5200, 5240)
32.	21092	Decal, Throttle
33.	21090	Decal, Fwd-Rev
34.	21106	Decal, Instrument Panel

WHEEL ASSEMBLY



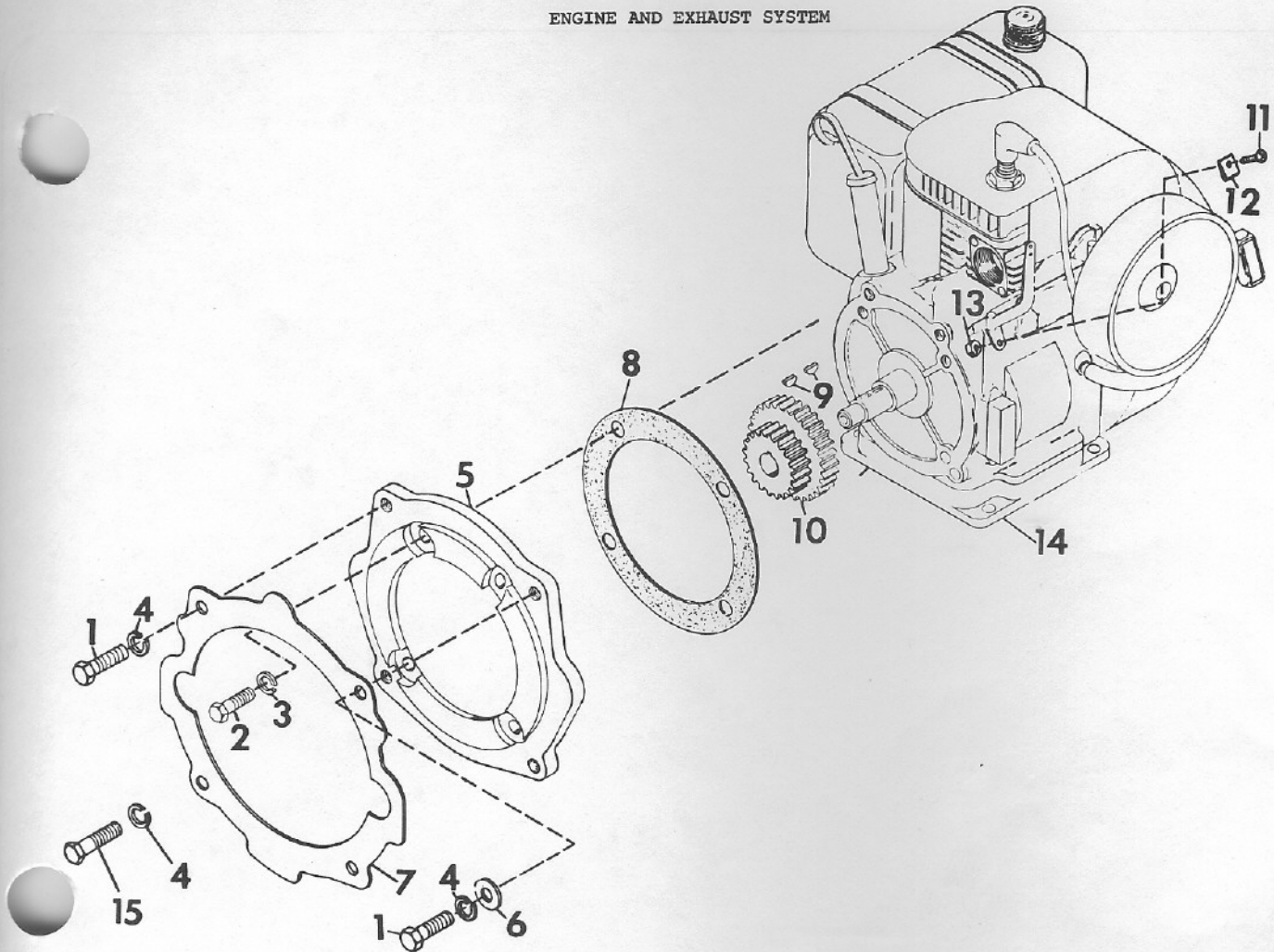
<u>ITEM NO.</u>	<u>PART NO.</u>	<u>DESCRIPTION</u>
1.	21221	Assembly, Semi-Pneumatic Wheel
2.	18762	Tire, Semi-Pneumatic 16 x 5W x 3
3.	12674	Disc, Inner Wheel
4.	12673	Disc, Wheel
5.	180120	Bolt, Hex; 3/8-16 x .75
6.	120382	Washer, Lock; 3/8 SP
7.	124829	Nut, Jam; 3/8-16

REMOTE AIR CLEANER



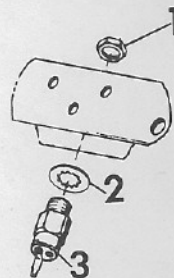
ITEM NO.	PART NO.	DESCRIPTION
1.	21321	Plate, Breather
2.	21232	Hose, Crankcase Ventilation
3.	21247	Clamp, .88 Dia Hose
4.	21324	Gasket, Air Cleaner Elbow
5.	21326	Elbow, Air Cleaner
6.	21245	Clamp, 2.25 Dia Hose
7.	113893	Washer, Copper; .219 x .500 x .049
8.	436703	Screw, Mach 8-32 x 2-3/4
9.	21233	Hose, Air Cleaner
10.	456004	Nut, Lock; 3/8-16 Washer Insert Hex
11.	180122	Bolt, Hex; 3/8-16 x 1
12.	21234	Bracket, Air Cleaner To Tractor
13.	21337	Bracket, Air Cleaner
14.	21335	Hose, Unloader
15.	21334	Clamp, 1.38 Dia Hose
16.	21332	Housing, Lower
17.	21333	Filter Element
18.	21331	Housing, Upper
19.	21330	Bolt, Special Air Cleaner
20.	10905	Washer, Sealing
21.	120392	Washer, Flat; 9/32 x 5/8 x .065
22.	419454	Nut, Lock; 1/4-20 Washer Insert
23.	180123	Bolt, Hex; 3/8-16 x 1-1/8
24.	21336	Gasket, Air Cleaner
25.	21375	Spring, Compression; .480 x 20 Lb/in
26.	21473	Support, Remote Air Cleaner

ENGINE AND EXHAUST SYSTEM



ITEM NO.	PART NO.	DESCRIPTION
1.	180149	Bolt, Hex; 7/16-14 x 1-1/2
2.	180121	Bolt, Hex; 3/8-16 x 7/8
3.	131099	Washer, Lock; 3/8 SP Heavy
4.	131100	Washer, Lock; 7/16 SP Heavy
5.	14938	Adapter, Engine
6.	120388	Washer, Flat; 7/16 x 1 x .083
7.	10635	Gasket, Chassis to Adapter
8.	15718	Gasket, Engine to Adapter
9.	124545	Key, Woodruff; 5/32 x 5/8 Hard
10.	17838	Gear; 10/12 DP, 21/30 Teeth
11.	159920	Screw, Machine; 10-24 x 1/2 Pan HD
12.	15453	Clip
13.	190254	Nut, Lock; 10-24 Washer Insert
14.	21042	Engine, 8 HP; Manual Start
15.	180147	Bolt, Hex; 7/16-14 x 1-1/4

ELECTRICAL SYSTEM



ITEM NO.	PART NO.	DESCRIPTION
1.	18585	Nut, Jam; 5/8-32
2.	18586	Washer, Lock; 5/8 Internal Tooth
3.	21104	Switch, Ignition