



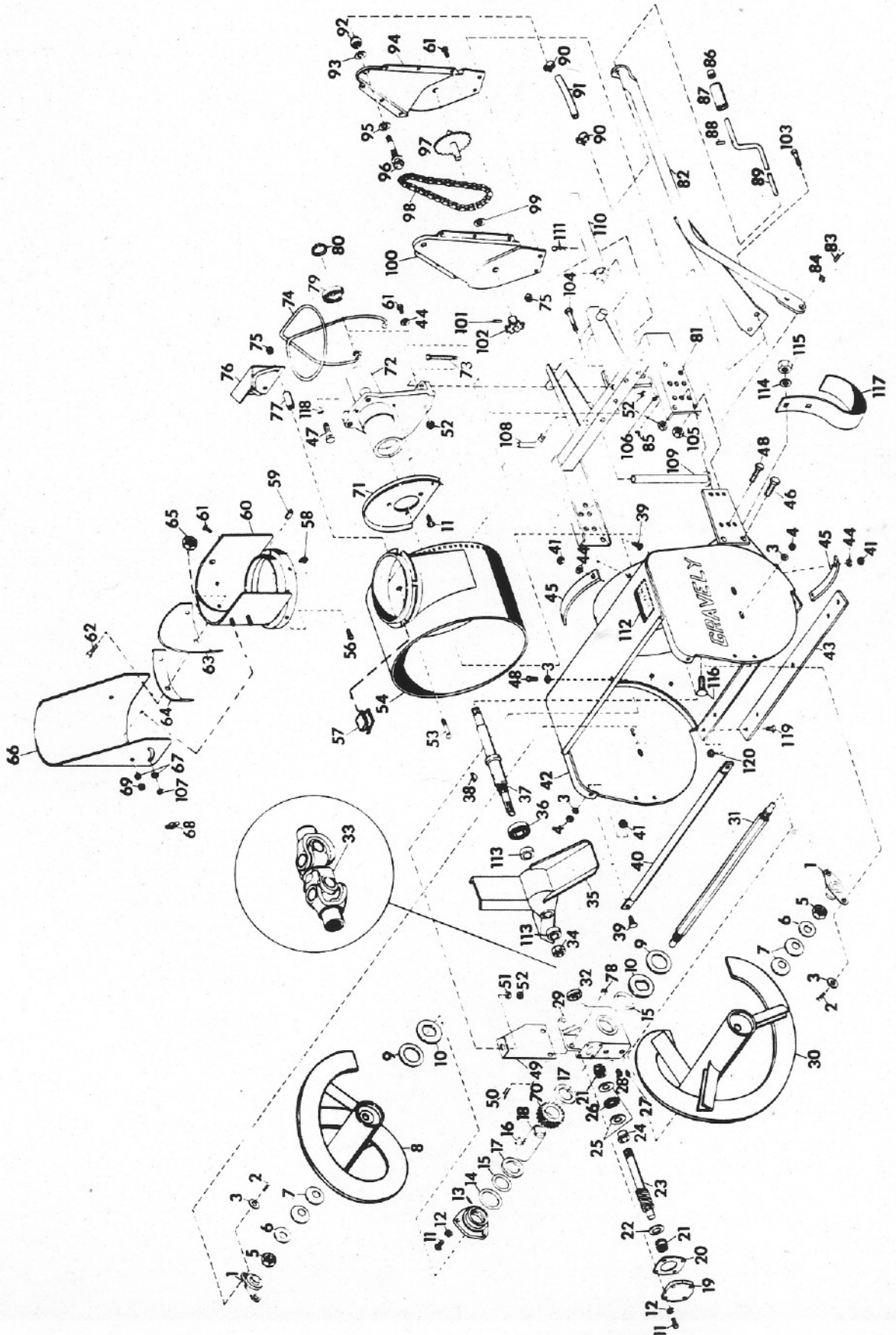
To continue its program of quality and design improvement, the manufacturer reserves the right to change specifications, design or prices without notice and without incurring obligation

ILLUSTRATED PARTS LIST

44" SNOWBLOWER

Model Number
Effective Date
Form Number

19786E1
8-15-72
19826P1



<u>ITEM NO.</u>	<u>PART NO.</u>	<u>DESCRIPTION</u>
1	12409P1	Flange Bearing
2	180082	5/16-18 x 1-3/8 Hex Hd Bolt
3	120394	13/32 ID x 13/16 OD x .065 Washer
4	9419455	5/16-18 Washer Insert Locknut
5	426767	7/8-14 Hex Nut
6	6494P1	Pilot Washer
7	6493P1	Spring Washer
8	19795A1	Reel Weldment, RH
9	9657P1	Friction Disc
10	12399P1	Drive Plate
11	180020	1/4-20 x 3/4 Hex Hd Bolt
12	120423	1/4 Internal Tooth Lockwasher
13	12400P1	Gear Housing Cap
14	9669P1	O-Ring, 3 x 3-1/4 x 1/8
15	9668P1	O-Ring, 3/4 x 2-1/8 x 3/16
16	12403P1	Key
17	12404P1	Thrust Race
18	12402P1	Reel Gear Tube
19	6341P1	Front Pinion Bearing Cap
20	6339P1	Bearing Cap Gasket
21	9660P1	Torrington Bearing
22	9659P1	Thrust Washer
23	10574P1	Worm Shaft
24	10325P1	Spacer
25	9662P1	Needle Thrust Bearing Race
26	9661P1	Torrington Bearing
27	103880	1/2 Sq Hd Pipe Plug Steel
28	103879	3/8 Sq Hd Pipe Plug Steel
29	10573P1	Gear Housing
30	19799A1	Reel Weldment, LH
31	19794P1	Reel Shaft
32	9667P1	Oil Seal
33	19530P1	Double Universal Joint
34	13619P1	1-14 Washer Insert Locknut
35	10224A1	Fan Weldment
36	13464P1	Ball Bearing
37	11790P1	Fan Shaft
38	124553	1 x 1/4 Woodruff Key
39	120518	1/4-20 x 3/4 Rd Hd Sq Nk Bolt
40	19792P1	Guard
41	9419454	1/4-20 Washer Insert Locknut
42	19788A1	44" Body Weldment
43	19791P1	Wear Strip
44	120392	9/32 x 5/8 x .065 Flatwasher
45	6477P2	Bearing Ring
46	455025	1/2-20 x 1 Grade 8
47	180173	1/2-13 x 1 Hex Hd Bolt
48	180122	3/8-16 x 1 Hex Hd Bolt
49	10579P1	Gear Box Support Weldment
50	181666	7/16-20 x 1 Hex Hd Bolt
51	120394	13/32 ID x 13/16 OD x .065 Thk Washer
52	456004	3/8-16 Washer Insert Locknut
53	126344	1/4-20 Rd Hd Sq Nk Bolt
54	6410A1	Fan Housing Weldment
56	159582	8/32 x 3/8 Pan Hd Machine Screw
57	10580P1	Guide
58	445339	8/32 Adjusting Snap Spring Nut

<u>ITEM NO.</u>	<u>PART NO.</u>	<u>DESCRIPTION</u>
59	6496P1	Clamp
60	6404A1	Chute Weldment
61	180016	1/4-20 x 1/2 Hex Hd Bolt
62	155886	8/32 x 1/2 Flat Hd Machine Screw
63	6352P1	Deflector Baffle
64	10496P1	Baffle Retainer
65	120622	8/32 Hex Nut
66	6399A1	Deflector Chute Weldment
67	120392	9/32 x 5/8 x .065 Flatwasher
68	6464P1	Deflector Wing Nut
69	9419454	1/4-20 Washer Insert Locknut
70	12401P1	Worm Gear
71	10186A1	Cable Guide Weldment
72	11791P1	Drive Housing
73	433115	3/8-16 x 4-1/4 Hex Hd Bolt
74	6381P1	Wire Rope
75	9413314	1/4-20 Hex Locknut
76	6370A1	Cable Guide Weldment
77	6375P1	Tube Guard Spacer
78	274655	7/16-20 Hex Locknut
79	11605P1	Ball Bearing
80	11792P1	Retaining Ring
81	11780A1	Frame Weldment
82	11806A1	Crank Support Weldment
83	180124	3/8-16 x 1-1/4 Hex Hd Bolt
84	120394	13/32 ID x 13/16 OD x .065 Washer
85	456004	3/8-16 Washer Insert Locknut
86	10210P1	Stud Cap
87	10211P1	Handle Grip
88	454563	3/16 x 7/8 Slotted Spring Pin
89	11805P1	Crank
90	9630P1	Hose Clamp
91	9612P1	Connector
92	272739	5/8-18 Washer Insert Locknut
93	6499P1	Spring Washer
94	9687A1	Sprocket Housing Rear Weldment
95	6497P1	Friction Ring
96	9691A1	Sprocket Weldment
97	9694A1	Sprocket Weldment
98	9642P1	Chain
99	131016	21/32 x 1-5/16 x .095 Flatwasher
100	9686A1	Sprocket Housing Front Weldment
101	453670	1/4 x 1-1/8 Spring Pin
102	9640P1	Sprocket
103	180134	3/8-16 x 2-1/2 Hex Hd Bolt
104	180137	3/8-16 x 2-3/4 Hex Hd Bolt
105	120371	1/2-20 Hex Nut
106	456004	3/8-16 Washer Insert Locknut
107	120380	1/4 Spring Type Lockwasher
108	13457P1	Adjusting Handle
109	6027A1	Sprayer Tank Stand
110	11809A1	Push Rod Weldment
111	10405P1	Hair Pin Cotter
112	19479P1	Decal-Caution
113	12407P1	Spacer
114	120396	17/32 x 1-1/16 x .095 Washer
115	435507	1/2-13 Washer Insert Locknut
116	126485	1/2-13 x 1-1/4 Carriage Bolt
117	10188P1	Skid
118	120384	1/2 Spring Lock Washer
119	180075	5/16-18 x 5/8 Hex Hd Bolt
120	9413447	5/16-18 Type N Locknut