

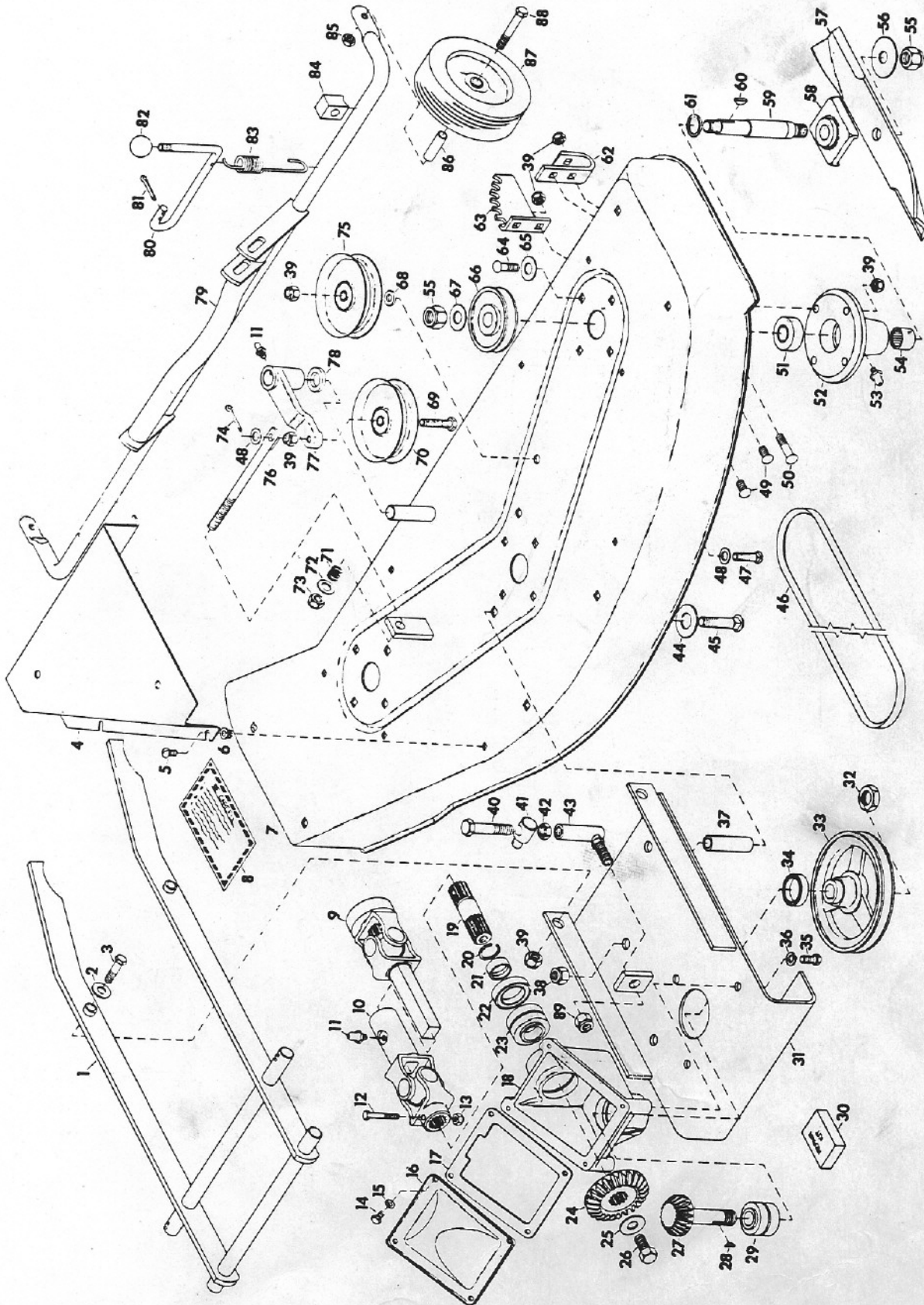


To continue its program of quality and design improvement, the manufacturer reserves the right to change specifications, design or prices without notice and without incurring obligation.

# ILLUSTRATED PARTS LIST

40" ROTARY MOWER

Model Number MA 608  
Effective Date July 1, 1969  
Form Number 14910P1



<u>ITEM</u> <u>NO.</u>	<u>PART NO.</u>	<u>DESCRIPTION</u>
1	11251A2	Pivot Arm Weldment
2	120388	7/16 Flatwasher
3	180126	3/8 x 1 1/2 Hex. Hd. Bolt
4	14674P1	Pulley Cover R. H.
NS	14675P1	Pulley Cover L. H.
5	125680	1/4 x 5/8 Machine Screw
6	11777P1	Plastic Grommet
7	14663A1	Deck Weldment
8	11238P1	Safety Decal
9	13517P1	Male U-Joint End
10	13518P1	Female U-Joint End
11	9411027	Lube Fitting
12	180044	1/4 x 2 Hex. Hd. Bolt
13	9419454	1/2 Locknut
14	180016	1/2 x 1/2 Hex. Hd. Bolt
15	120380	1/4 Lockwasher
16	10982P1	Gear Housing Cover
17	11231P1	Gear Housing Gasket
18	14636P1	Gear Box Casting
19	14637P1	Drive Shaft
20	14642P1	Retaining Ring
21	14641P1	Ring Spacer
22	14646P1	Grease Seal
23	14640A1	Roller Bearing
24	11220P1	Bevel Gear
25	120390	9/16 Flatwasher
26	14639P1	Self Locking Bolt
27	14643P1	Pinion Shaft Gear
28	124546	#6 Woodruff Key
29	14644A1	Roller Bearing
30	12134P1	Repair Kit
31	14655A1	Gear Housing Support Weldment
32	451539	3/4 Hex. Jam Nut
33	14660P1	Drive Sheave
34	14645P1	Grease Seal
35	180120	3/8 x 3/4 Hex. Hd. Bolt
36	120382	3/8 Lockwasher
37	14669P1	Spacer
38	435507	1/2 Locknut
39	456004	3/8 Locknut
40	189349	1/2 x 5 1/4 Hex. Hd. Bolt
41	11317A1	Mower Lift Pivot Assembly
42	9415993	1/2 Hex. Jam Nut
43	11315P1	Quick Disconnect Ball Joint Assy.
44	446257	13/16 Flatwasher
45	126803	1/2 x 3 1/2 Carriage Bolt
46	14673P1	V-Belt
47	126411	3/8 x 1 1/2 Carriage Bolt
48	120394	13/32 Flatwasher
49	126227	3/8 x 3/4 Carriage Bolt
50	126416	3/8 x 1 3/4 Carriage Bolt

<u>ITEM NO.</u>	<u>PART NO.</u>	<u>DESCRIPTION</u>
51	11641P1	Ball Bearing
52	10984P1	Bearing Housing
53	127800	Lube Fitting
54	11235P1	Needle Bearing
55	13412P1	5/8 Locknut
56	446502	5/8 Flatwasher
57	14668P1	Blade
58	10986P1	Blade Cradle
59	11232P1	Bearing Housing Shaft
60	124549	#9 Woodruff Key
61	11229P1	Oil Seal
62	11264P1	Axle Support Bracket
63	11265P1	Height Adjustment Bracket
64	126402	3/8 x 1 1/4 Carriage Bolt
65	446230	9/16 Flatwasher
66	10988P1	Spindle Sheave
67	446239	5/8 Flatwasher
68	14672P1	Idler Spacer
69	11313P1	Drilled Bolt
70	11255P1	Idler Sheave
71	11779P1	Spring
72	120395	15/32 Flatwasher
73	9419456	7/16 Locknut
74	179252	Cotter Pin
75	11316P1	Idler Sheave
76	14671P1	Idler Rod
77	10992P1	Idler Pivot Arm
78	14670P1	Idler Arm Spacer
79	14661A1	Axle Pivot Weldment
80	10993P1	Height Adj. Lever
81	120123	Cotter Pin
82	11261P1	Adj. Control Knob
83	11268P2	Spring
84	11260P1	Nylon Stop
85	124829	3/8 Hex. Jam Nut
86	11258P1	Bushing
87	11269P1	Guage Wheel
88	180134	3/8 x 2 1/2 Hex. Hd. Bolt
89	190171	1/2 Locknut
NS	11715P1	Belt Installation Decal