

ILLUSTRATED PARTS LIST

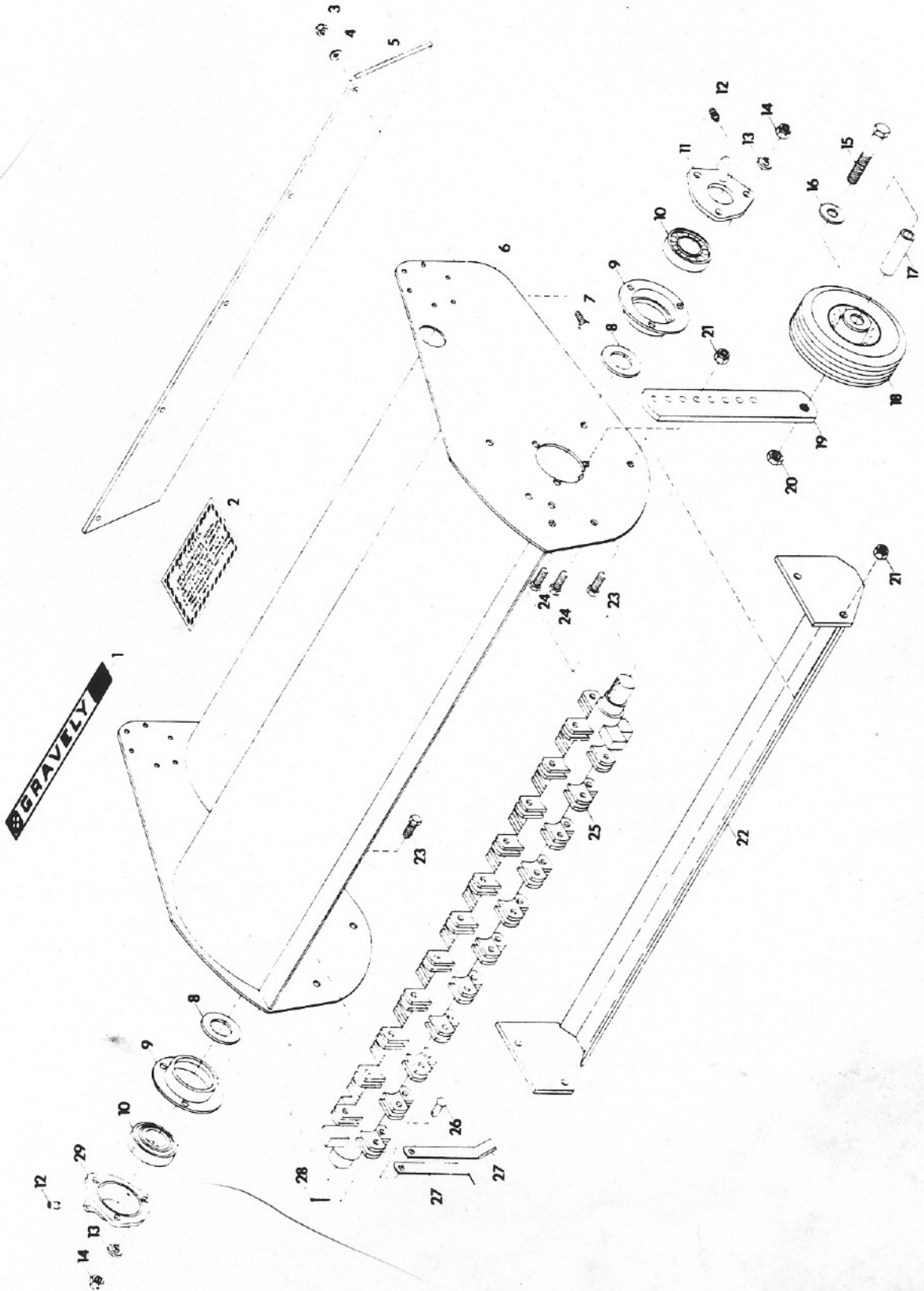
32" SAFETY MOWER

Model Number 15681E1

Effective Date 6-15-72

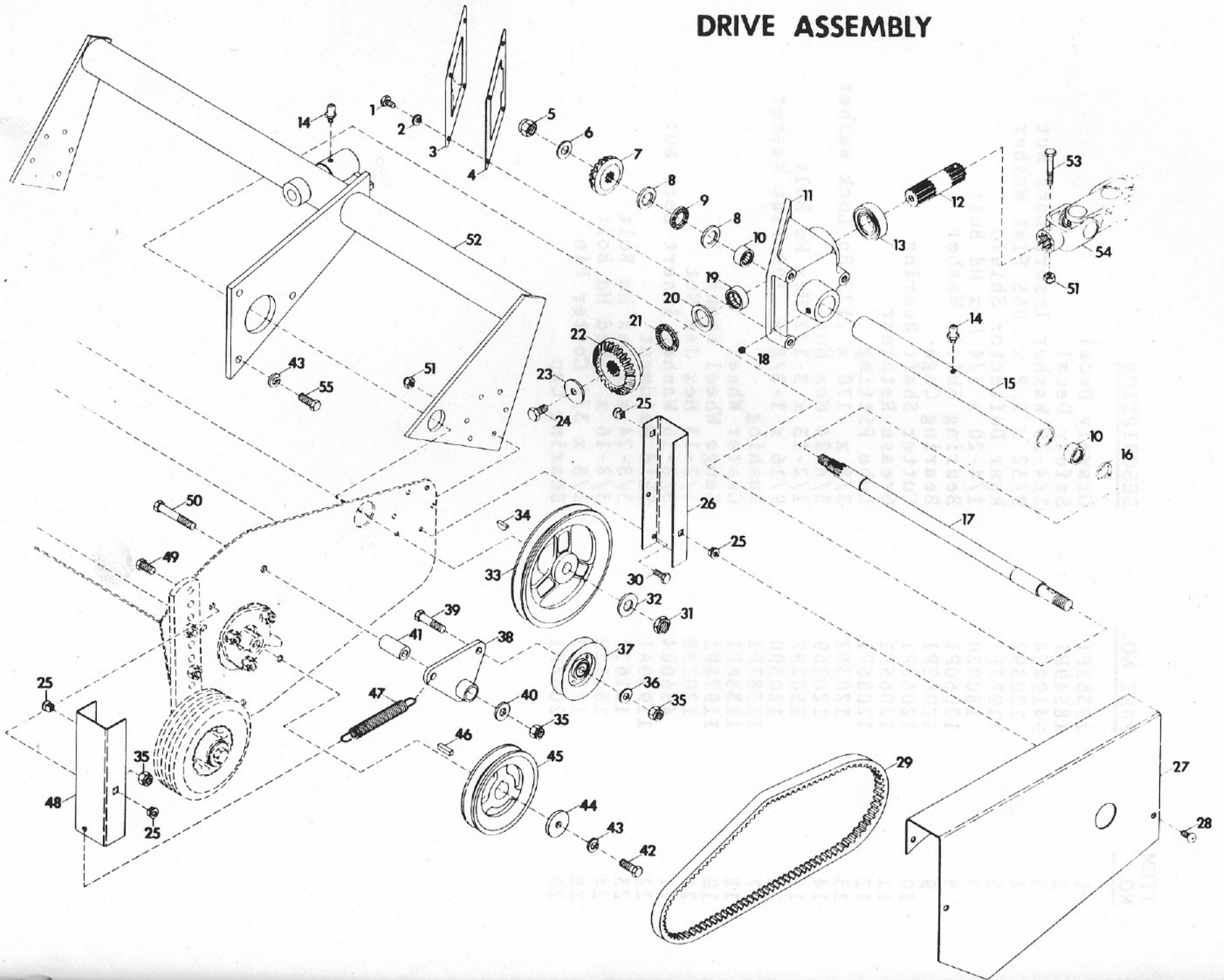
Form Number 19668P1

HOUSING ASSEMBLY



<u>ITEM NO.</u>	<u>PART NO.</u>	<u>DESCRIPTION</u>
1	19365P1	Gravelly Decal
2	18549P1	Safety Decal
3	9419454	1/4-20 Washer Insert Lock Nut
4	120392	9/32 x 5/8 x .065 Flat Washer
5	11977P1	Rear Deflector Shield
7	180020	1/4-20 x 3/4 Hex Hd Bolt
8	12060P1	Bearing Shield Washer
9	12062P1	Bearing Cage
10	12063P1	Cutter Shaft Bearing
11	12065P1	Grease Retainer
12	12086P1	Lube Fitting
13	120382	3/8 x .170 x .123 Sp Lock Washer
14	120369	3/8-24 Hex Nut
15	180192	1/2-13 x 3-1/2 Hex Hd Bolt
16	120390	9/16 x 1-3/8 x .109 Flat Washer
17	11387P1	Bushing
18	11386P1	Caster Wheel
19	11978P1	Gauge Wheel Shank
20	120238	1/2-13 Hex Jam Nut
21	456004	3/8-16 Washer Insert Lock Nut
22	11959A1	Skid Weldment
23	181637	3/8-24 x 1 Hex Hd Bolt
24	180122	3/8-16 x 1 Hex Hd Bolt
28	177923	1/8 x 3/4 Cotter Pin
29	12064P1	Bearing Cap

DRIVE ASSEMBLY



<u>ITEM NO.</u>	<u>PART NO.</u>	<u>DESCRIPTION</u>
1	180016	1/4-20 x 1/2 Hex Hd Cap Screw C1038
2	120380	1/4 Spring Type Lock Washer
3	10982P1	Gear Housing Cover
4	11231P1	Gear Housing Gasket
5	11835P1	Esna Lock Nut
6	9417098	17/32 x 1 x .063 Flat Washer
7	11831P1	Bevel Pinion
8	11224P1	Needle Thrust Bearing Race
9	6741P1	Bearing
10	9660P1	Torrington Bearing
11	12105P1	Gear Housing
12	11840P1	Drive Shaft
13	11293P1	Ball Bearing
14	9411027	1/4-28 Lube Fitting
15	12103P1	Support Tube
16	11324P1	Oil Seal
17	11966P1	Drive Shaft
18	102580	5/16-18 x 1/4 Hex Socket Screw
19	11227P1	Needle Bearing
20	11226P1	Needle Thrust Bearing Race
21	11225P1	Needle Thrust Bearing
22	11220P1	Bevel Gear
23	446477	7/16 x 1-3/8 x .083 Flat Washer
24	11196P1	Nylock Bolt
25	11777P1	Plastic Grommet
26	11974P1	Rear Channel
27	11976P1	Belt Cover
28	167260	1/4-20 x 5/8 Pan Hd Cross Recess Screw
29	12077P1	V-Belt
30	180020	1/4-20 x 3/4 Hex Hd Bolt
31	12075P1	5/8-18 Esna Thin Hd Lock Nut
32	131016	21/32 x 1-5/16 x .095 Flat Washer
33	12074P1	Drive Sheave
34	124549	#9 Woodruff Key
35	456004	3/8-16 Washer Insert Lock Nut
36	120394	13/32 ID x 13/16 OD x .065 Thk Washer
37	12070P1	Idler
38	12068A1	Idler Pivot Arm Weldment
39	180127	3/8-16 x 1-5/8 Hex Hd Bolt
40	120388	7/16 x 1 x .083 Flat Washer
41	12071P1	Bushing
42	181637	3/8-24 x 1 Hex Hd Bolt
43	120382	3/8 x .170 x .123 Sp Lock Washer
44	12106P1	Retaining Washer
45	11962P1	Sheave
46	11963P1	Square Key
47	11263P1	Spring
48	12076P1	Front Channel
49	180120	3/8-16 x 3/4 Hex Hd Bolt
50	180134	3/8-16 x 2-1/2 Hex Hd Bolt
51	9419454	1/4-20 Washer Ins. Lock Nut
52	11968A1	Support Tube Weldment
53	180044	1/4-20 x 2 Hex Hd Bolt
54	11967A1	Double Joint Assembly
55	180122	3/8-16 x 1 Hex Hd Bolt