

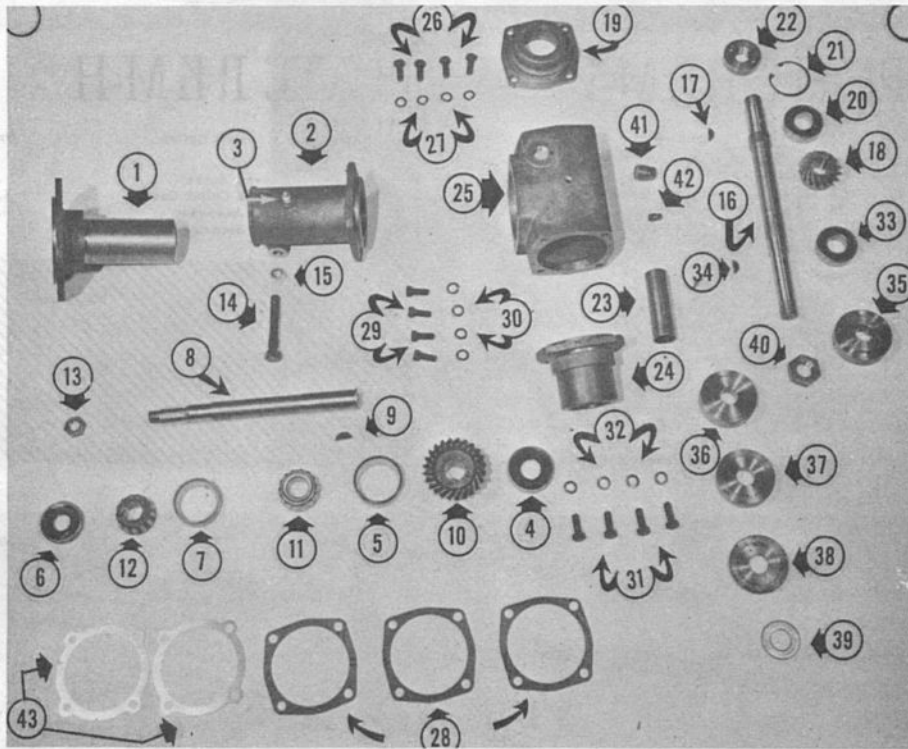
GRAVELY...ROTARY KNIFE MOWER CHAIN SAW LEAF MULCHER CIRCULAR SAW

ILLUSTRATED PARTS AND PRICE LIST

EFFECTIVE OCTOBER 1, 1956

PRICES SUBJECT TO CHANGE WITHOUT NOTICE

KEYS: NS MEANS NOT SHOWN IN PHOTO, NN MEANS NO PART NUMBER, ORDER BY DESCRIPTION.



1	M-150	Drive Shaft Housing	5.09
2	M-181	Swivel Casting	5.05
3	903-G	Swivel Casting 1/8" Alemite Fitting	.11
4	M-530	Oil Seal, (For Swivel Casting)	1.49
5	M-478-R	Bearing, Cup, (Drive Shaft)	1.49
6	M-459	Oil Seal, (Garlock #229)	1.14
7	3147-R	Bearing, Cup, (Drive Shaft)	1.49
8	RO-301-S	Drive Shaft	2.63
9	510-K	Drive Shaft Key	.04
10	RO-304	Bevel Gear	9.68
11	M-478-C	Bearing, Cone (Drive Shaft)	2.48
12	3147-C	Bearing, Cone (Drive Shaft)	2.48
13	227-N	Slip Clutch Securing Nut	.23
14	LH-560	Clamp Bolt, (For Swivel Casting)	.28
15	238-N	Clamp Bolt, Nut	.15
16	RO-322	Rotor Shaft	5.31
17	504-K	Key, (For Rotor Shaft)	.02
18	RO-305	Bevel Pinion	7.37
19	RO-103	Upper Bearing Housing	2.96
20	BB-109	Bearing, (For Rotor Shaft)	4.13
21	RR-205	Retaining Ring, (Upper Bearing Housing)	.42
22	RO-311	Bearing Nut, (For Rotor Shaft)	1.38
23	RO-306	Stand Pipe	.33
24	RO-104	Lower Bearing Housing	4.24
25	RO-102	Gear Housing	8.23
26	110-S	Bolts, (For Upper Bearing Housing)	.07
27	305-W	3/8" Lock Washers, (For Upper Bearing Housing Bolts)	.01
28	M-488	Gaskets, (Upper & Lower Housing & Swivel Casting)	.06
29	110-S	3/8" x 1/8" Bolts, (Swivel Casting)	.07
30	305-W	3/8" Lock Washers, (Swivel Casting Bolts)	.01
31	111-S	Bolt (Lower Bearing Housing)	.07
32	305-W	3/8" Lock Washer (Lower Bearing Housing Bolts)	.01
33	BB-109	Bearing (For Rotor Shaft)	4.13
34	504-K	Key, (Rotor Shaft)	.02
35	RO-323	Fixed Collar	1.76
36	RO-326	3/4" Loose Collar	1.76
37	RO-325	1/2" Loose Collar	1.38
38	RO-324	1/4" Loose Collar	1.05
39	414-W	Spacer	.04
40	RO-327	Rotor Shaft Nut (Left Hand Thread)	.20
41	702-P	Oil Filler Plug	.08
42	701-P	Oil Level Plug	.07
43	SH-114	Adjusting Shims, .005	.14
	SH-114	Adjusting Shims, .020	.18
NS		Slip Clutch, Complete	10.31

PLATE R K M-A

DRIVE

Photo No.	Part No.	Description	Price
-----------	----------	-------------	-------

NOTE * Part of Welded Assembly *

1	RO-313	Guard *	18.70
2	RO-314	Skid Panel *	1.65
3	RO-315	Rear Fender	3.03
4	RO-316	Front Fender	2.20
5	RO-317	Fender Bracket	.22
6	RO-318	Skid	1.32
7	RO-321	Blades	4.68
8	RO-329	Skid Panel Brace *	.22
9	RO-332	Spacing Washer	.39
10	114-S	Fender Mtg. Bolt	.09
NS	175-S	Skid Mtg. Bolt	.01
NS	303-W	Skid Mtg. Bolt Lock Washer	.01
NS	233-N	Fender Mtg. Bolt Nut	.08

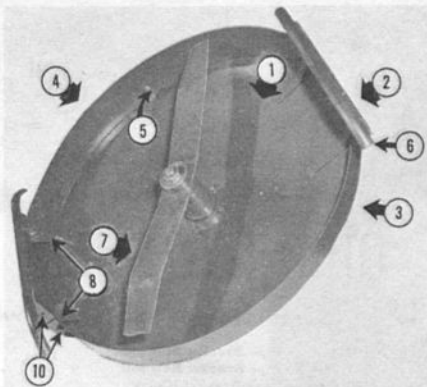


PLATE R K M-B PLATE R K M C-L

A NN Leaf Mulcher Assembly 10.50

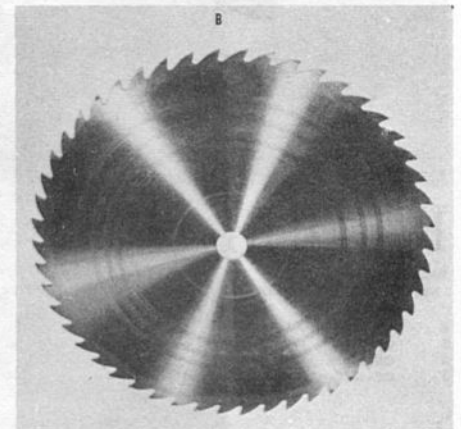
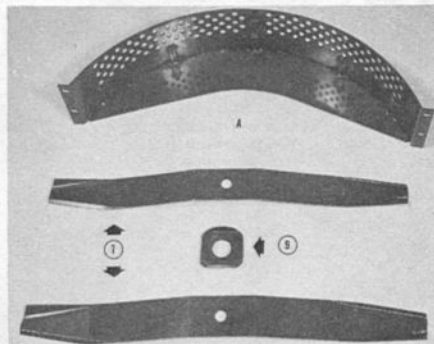


PLATE D

B NN Circular Saw (18" Less Drive) 14.25

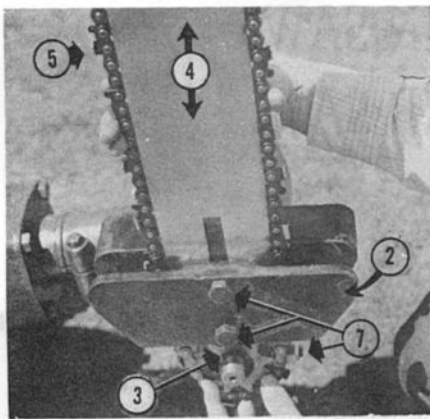


PLATE RKM-E

Photo No.	Part No.	Description	Price
Chain Saw			
1	CS-101	Bracket	12.65
2	CS-102	Clamp	3.03
3	CS-301	Sprocket	3.19
4	CS-302	Guide Bar 26" Standard	29.70
NS	CS-302-32	Guide Bar 32" Length	35.64
NS	CS-302-36	Guide Bar 36" Length	37.73
NS	CS-302-40	Guide Bar 40" Length	41.80
5	CS-303	Saw Chain, 26" Standard	29.70
NS	CS-303-32	Saw Chain, 32" Length	35.64
NS	CS-303-36	Saw Chain, 36" Length	37.73
NS	CS-303-40	Saw Chain, 40" Length	41.80
Chain Parts, But Not Shown			
NS	CS-304	Saw Chain Left Hand Cutter	.50
NS	CS-305	Saw Chain Right Hand Cutter	.50

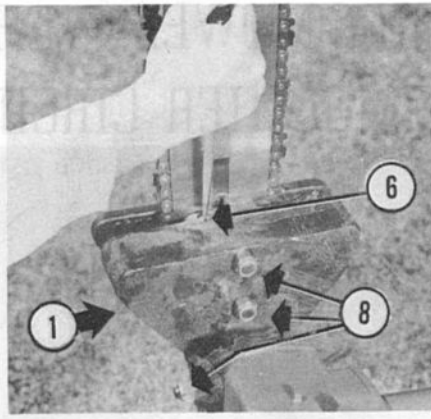


PLATE RKM-F

Photo No.	Part No.	Description	Price
NS	CS-306	Saw Chain Drive Link	.11
NS	CS-307	Saw Chain Tie Strap	.06
NS	CS-308	Saw Chain Master Link	.17
NS	CS-309	Saw Chain Rivet	.06
NS	CS-310	Saw Chain Master Pin	.11
Tools, Not Shown			
NS	CS-311	File Holder With File	3.25
NS	CS-312	File Only	.74
NS	CS-313	Depth Gauge Jointer	5.44
NS	CS-314	Filing Vise	11.00
NS	CS-315	Chain Breaker	15.95
NS	CS-316	Universal Handle	8.58
6	CS-317	Chain Tension Adjusting Bolt	.18
NS	CS-318	Chain Tension Adjusting Bolt Nut	.33
7	159-S	Clamp & Bracket Bolts	.25
8	238-N	Clamp & Bracket Bolt Nuts	.15

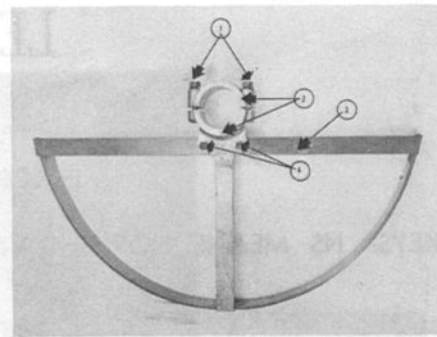


PLATE RKM-H

Photo No.	Part No.	Description	Price
1	171-S	Clamp Screw	.10
2	PS-101	Guard Collar Casting	4.74
3	PS-309	Rim Assembly	6.64
4	197-S	Rim Securing Screw	.10

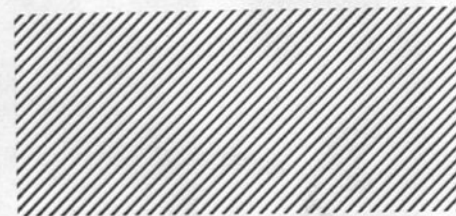


PLATE RKM.G

Photo No.	Part No.	Description	Price
1	CS-323	Oil Tank With Tank Bracket	4.84
2	CS-325	1/4" Copper Oil Tank Pipe	.50
3	CS-326	Pipe Bracket	.17
4	CS-327	Flexible Tube, (Rubber)	1.54

Photo No.	Part No.	Description	Price
5	L-707	Connector	.19
6	L-814-D	Elbow Connector	.22
7	M-514	Tank Bracket Bolt	.08
8	232-N	Tank Bracket Bolt Nut	.13

OILING SYSTEM

Photo No.	Part No.	Description	Price
9	102-S	Pipe Bracket Bolt	.02
10	207-N	Pipe Bracket Bolt Nut	.02
11	CS-324	Tank Bracket (Only)	.55