

GRAVELY...ROTARY KNIFE MOWER CHAIN SAW LEAF MULCHER CIRCULAR SAW

- 4 - 5 4

ILLUSTRATED PARTS AND PRICE LIST, EFFECTIVE JANUARY 1, 1954

PRICES SUBJECT TO CHANGE WITHOUT NOTICE

KEYS: NS MEANS NOT SHOWN IN PHOTO, NN MEANS NO PART NUMBER, ORDER BY DESCRIPTION.

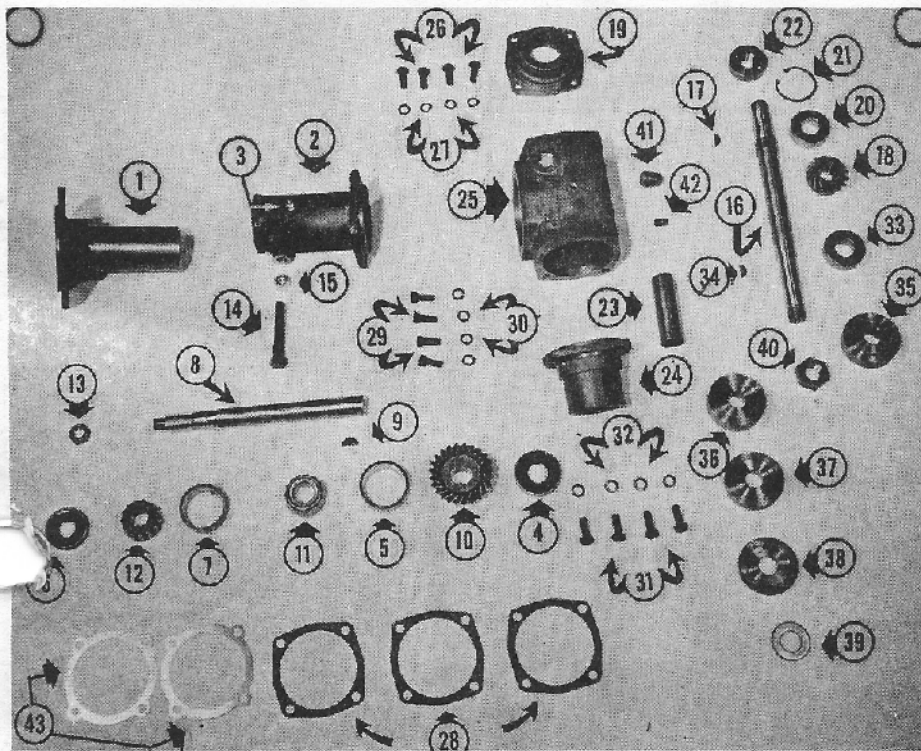


Photo No.	Part No.	Description	Price
1	M-150	Drive Shaft Housing	4.63
2	M-181	Swivel Casting	4.59
3	903-G	Swivel Casting 1/8" Alemite Fitting	.10
4	M-530	Oil Seal, (For Swivel Casting)	1.35
5	M-475-R	Bearing, Cup, (Drive Shaft)	1.24
6	M-459	Oil Seal, (Garlock #229)	1.04
7	3147-R	Bearing, Cup, (Drive Shaft)	1.35
8	RO-301-S	Drive Shaft	2.39
9	510-K	Drive Shaft Key	.04
10	RO-304	Bevel Gear	8.80
11	M-475-C	Bearing, Conc. (Drive Shaft)	1.89
12	3147-C	Bearing, Conc. (Drive Shaft)	2.25
13	227-N	Slip Clutch Securing Nut	.21
14	LH-560	Clamp Bolt, (For Swivel Casting)	.25
15	238-N	Clamp Bolt, Nut	.14
16	RO-322	Rotor Shaft	4.83
17	504-K	Key, (For Rotor Shaft)	.02
18	RO-305	Bevel Pinion	6.70
19	RO-103	Upper Bearing Housing	2.69
20	BB-109	Bearing, (For Rotor Shaft)	3.75
21	HR-205	Retaining Ring, (Upper Bearing Housing)	.38
22	RO-311	Bearing Nut, (For Rotor Shaft)	1.25
23	RO-306	Stand Pipe	.30
24	RO-104	Lower Bearing Housing	3.85
25	RO-102	Gear Housing	7.48
26	110-S	Bolts, (For Upper Bearing Housing)	.06
27	305-W	3/8" Lock Washers, (For Upper Bearing Housing Bolts)	.01
28	M-488	Gaskets, (Upper & Lower Housing & Swivel Casting)	.05
29	110-S	3/8" x 1/8" Bolts, (Swivel Casting)	.06
30	305-W	3/8" Lock Washers, (Swivel Casting Bolts)	.01
31	111-S	Bolt (Lower Bearing Housing)	.06
32	305-W	3/8" Lock Washer (Lower Bearing Housing Bolts)	.01
33	BB-109	Bearing (For Rotor Shaft)	3.75
34	504-K	Key, (Rotor Shaft)	.02
35	RO-323	Fixed Collar	1.60
36	RO-326	3/4" Loose Collar	1.60
37	RO-325	1/2" Loose Collar	1.25
38	RO-324	1/4" Loose Collar	.95
39	414-W	Spacer	.04
40	RO-327	Rotor Shaft Nut (Left Hand Thread)	.18
41	702-P	Oil Filler Plug	.07
42	701-P	Oil Level Plug	.06
43	SH-114	Adjusting Shim, .005	.13
	SH-114	Adjusting Shim, .020	.16
NS		Slip Clutch, Complete	9.37

PLATE RKM-A

DRIVE

Photo No.	Part No.	Description	Price
1	RO-313	Guard *	17.00
2	RO-314	Skid Panel "	1.50
3	RO-315	Rear Fender	2.75
4	RO-316	Front Fender	2.00
5	RO-317	Fender Bracket	.20
6	RO-318	Skid	1.20
7	RO-321	Blades	4.25
8	RO-329	Skid Panel Brace *	.20
9	RO-332	Spacing Washer	.35
10	115-S	Fender Mtg. Bolt	.07
NS	175-S	Skid Mtg. Bolt	.01
NS	303-W	Skid Mtg. Bolt Lock Washer	.01

NOTE * Part of Welded Assembly

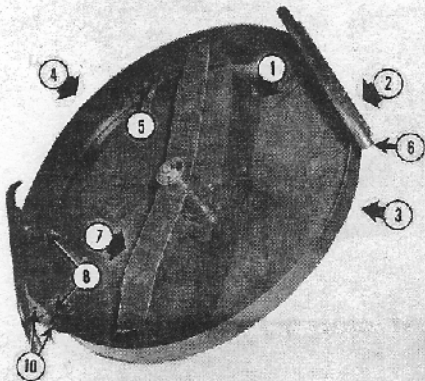


PLATE RKM-B PLATE RKM C-L

A NN Leaf Mulcher Assembly

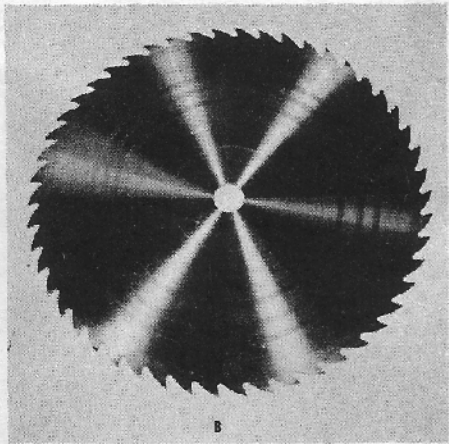
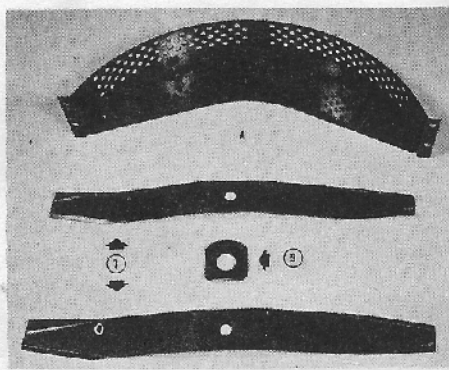


PLATE D

B NN Circular Saw (18" Less Drive